

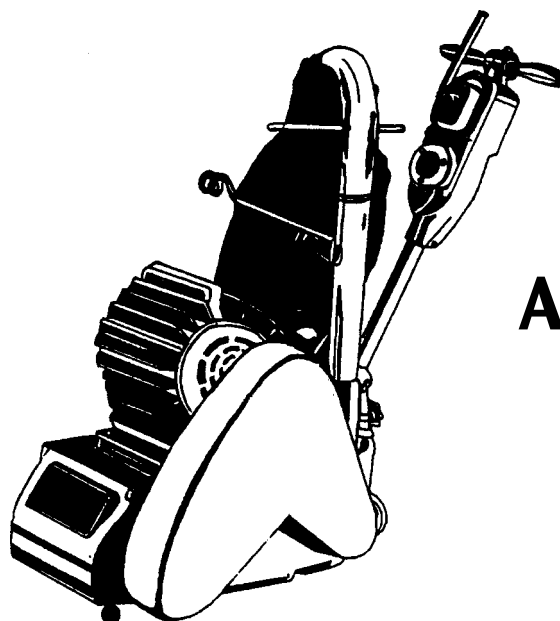
IVIE Enterprises

www.ivie-ent.com

Ph:(918)254-5161 or (888)262-5161 Fax:(918)250-4807



**Service
Manual**



American 8

READ THIS BOOK

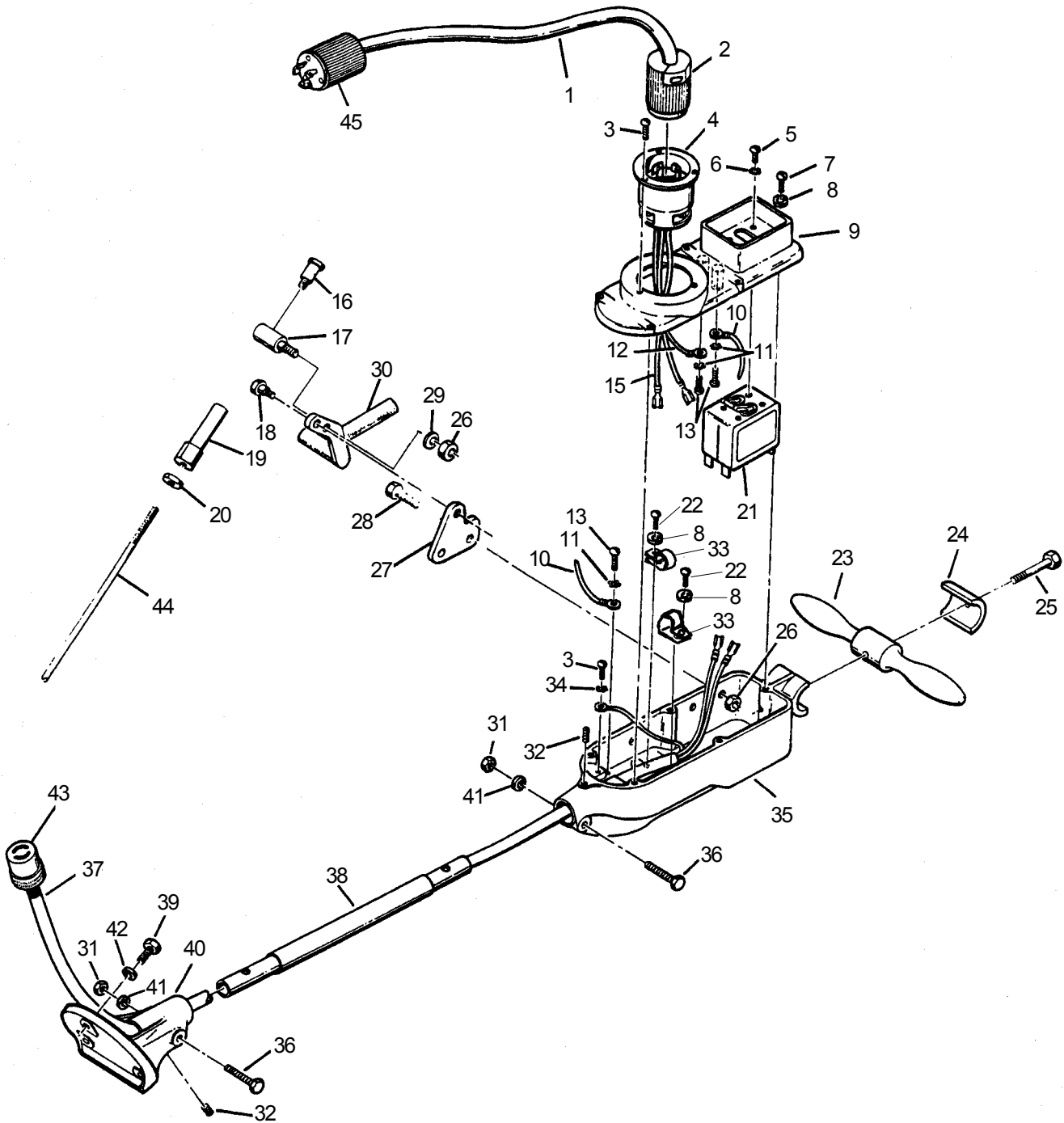
This book has important information for the use and safe operation of this machine. Failure to read this book prior to operating or attempting any service or maintenance procedure to your ALTO machine could result in injury to you or to other personnel; damage to the machine or to other property could occur as well. You must have training in the operation of this machine before using it. If your operator cannot read this manual, have it explained fully before attempting to operate this machine.

Si Ud. o sus operadores no pueden leer el Inglés, se hagan explicar este manual completamente antes de tratar el manejo o servicio de esta máquina.

All directions given in this book are as seen from the operator's position at the rear of the machine.

For new books write to: ALTO U.S. INC., 2100 Highway 265, Springdale, Arkansas 72764.

AMERICAN SANDERS TECHNOLOGY
Model American 8 Floor Sander
Drawing #1 Handle Assembly 12/00



IVIE Enterprises

www.ivie-ent.com

Ph:(918)254-5161 or (888)262-5161 Fax:(918)250-4807

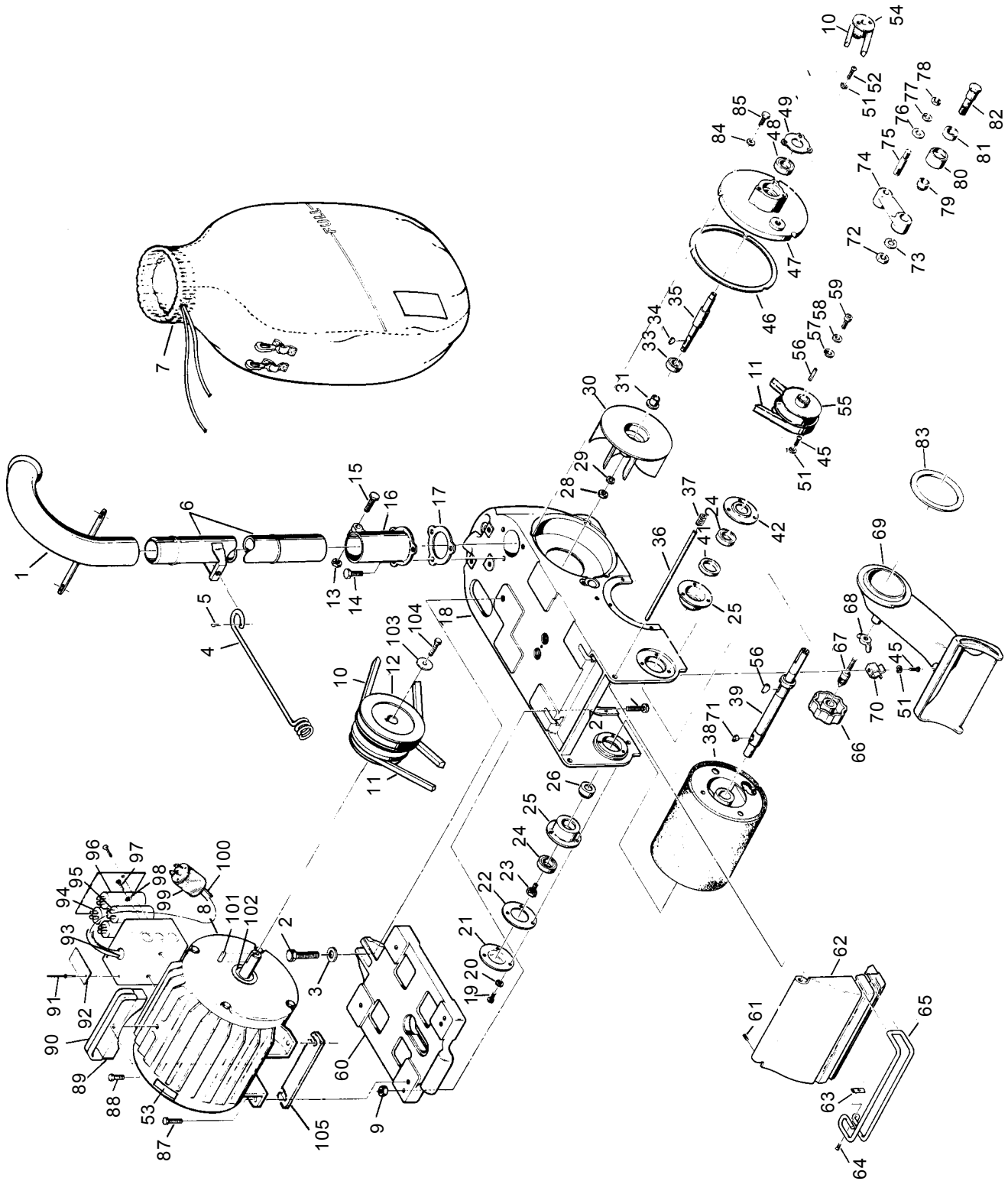
AMERICAN SANDERS TECHNOLOGY
Model American 8 Floor Sander
Parts List #1 Handle Asembly 12/00

| Ref No. | Part No | Description | Qty |
|---------|---------|----------------------------------|-----|
| 1 | ref. | Cord Set | 1 |
| 2 | 41706A | Connector | 1 |
| 3 | 962065 | Screw - 8-32 x ¼ Pn St Mach | 4 |
| 4 | 43501A | Inlet - 20A, 250V | 1 |
| 5 | 962070 | Screw - 6-32 x ¼ Pn St Mach | 4 |
| 6 | 980607 | Washer - #1106 Shakeproof | 4 |
| 7 | 962794 | Screw - 10-24 x 1 | 5 |
| 8 | 980650 | Washer - ¾ Lock | 7 |
| 9 | 22127C | Cover - Switch Housing | 1 |
| 10 | 48901A | Wire Ass'y - Green | 1 |
| 11 | 980699 | Washer - #1210 Shakeproof | 3 |
| 12 | 48900A | Wire Assembly Ground | 1 |
| 13 | 85393A | Screw - 10-24 x ¼ Pn St Mach | 3 |
| 14 | | | |
| 15 | 49023A | Wire Ass'y - Black | 2 |
| 16 | 80021A | Bolt ¾ x 5/8 | 6 |
| 17 | 66151A | Pivot Control Rod | 1 |
| 18 | 80022A | Bolt , Shoulder ½ x 5/8 | 1 |
| 19 | 67129A | Adjuster, Control Rod | 2 |
| 20 | 920148 | Nut ¾ - 16 | 1 |
| 21 | 41411A | Switch - Circuit Breaker | 1 |
| 22 | 85517A | Screw - 10-24x½ | 2 |
| 23 | 64405A | Handle - Steering | 1 |
| 24 | 21904C | Clamp | 1 |
| 25 | 85818A | Screw 5/16 -18x 2½ Hex St | 1 |
| 26 | 920284 | Nut ¼-20 | 2 |
| 27 | 66694A | Plate, Control Lever | 1 |
| 28 | 85393A | Screw ¼-2 x 1¼ | 2 |
| 29 | 980646 | Washer ¼ | 1 |
| 30 | 25602A | Lever, Control | 1 |
| 31 | 920256 | Nut - 5/16-18 Hex | 3 |
| 32 | 86200A | Screw ¾ -16 x 5/8 St St Dogpt | 2 |
| 33 | 51074A | Clamp - Cord | 2 |
| 34 | 980621 | Washer - .1681 x .3700 SH 1108 | 1 |
| 35 | 20704C | Housing - Switch | 1 |
| 36 | 85816A | Screw - 5/16 -18x1¾ | 2 |
| 37 | 41917A | Cord - Interconnecting | 1 |
| 38 | 66116C | Pipe - Handle | 1 |
| 39 | 962288 | Screw - ¾-16 X 1" Hex St Mach | 3 |
| 40 | 21105C | Mount - Handle | 1 |
| 41 | 980652 | Washer -.319 x .586 x .078 St Lk | 2 |
| 42 | 980638 | Washer - ¾ Lt Spring Type | 3 |
| 43 | 41707A | Connector | 1 |
| 44 | 67143A | Rod Control | 1 |
| 45 | 45608A | Plug | 1 |

IVIE Enterprises

www.ivie-ent.com Ph:(918)254-5161 or (888)262-5161 Fax:(918)250-4807

AMERICAN SANDERSTECHNOLOGY
Model American 8 Floor Sander
Drawing #2 12/00



IVIE Enterprises

www.ivie-ent.com

Ph:(918)254-5161 or (888)262-5161 Fax:(918)250-4807

AMERICANSANDERS TECHNOLOGY
Model American 8 Floor Sander
Parts List #2 12/00

| Ref # | Part No. | Description | Qty |
|-------|----------|---|-----|
| 1 | 62800A | Pipe - Ass'y | 1 |
| 2 | 85706A | Screw - 1/2 - 13 x 1 1/4 Hex St | 1 |
| 3 | 87006A | Washer - .56 X 1.38 X .11 Flat | 1 |
| 4 | 60401A | Arm - Cable | 1 |
| 5 | 925036 | Pin - Cotter | 1 |
| 6 | 66110A | Pipe Ass'y | 1 |
| 7 | 50954A | Dust - Bag | 1 |
| 8 | 44639A | Motor 230/60 | 1 |
| | 44640A | Motor 240/50 | 1 |
| 9 | 920260 | Nut - 3/8-16 x 5/16 Hex | 2 |
| 10 | 50920A | Belt - V | 1 |
| 11 | 51024A | Belt - V | 1 |
| 12 | 66168A | Pulley - Motor | 1 |
| 13 | 920256 | Nut 5/16 - 18 Hex | 1 |
| 14 | 85820A | Screw - 3/8-16 x 5/8 Hex St Cap | 3 |
| 15 | 85816A | Screw - 5/16-18 x 1 3/4 Hex St Flt | 1 |
| 16 | 27801C | Support - Dust Pipe | 1 |
| 17 | 34223A | Gasket - Pipe Support | 1 |
| 18 | 23405B | Frame - Main | 1 |
| 19 | 962016 | Screw - 10-24 x 1/2 Pn St Mach | 3 |
| 20 | 980650 | Washer - 1941 x 3230 x 040 Lk | 3 |
| 21 | 62608C | Cover - Housing Drum | 1 |
| 22 | 54305A | Gasket | 1 |
| 23 | 67316A | Screw - Drum Lock | 1 |
| 24 | 51110A | Bearing - Ball | 2 |
| 25 | 64703A | Housing - Bearing Shaft | 2 |
| 26 | 67811A | Spacer - Drum | 1 |
| 27 | 69032A | Screw - Motor Locating | 2 |
| 28 | 81202A | Nut - 7/16-14 Hex L.H. | 1 |
| 29 | 87002A | Washer - .47 x .94 x .06 Flat St | 1 |
| 30 | 23301A | Fan | 1 |
| 31 | 61602A | Collar | 1 |
| 33 | 902567 | Bearing Ball | 1 |
| 34 | 65302A | Key - 1/8 x 1/2 #3 Woodruff | 1 |
| 35 | 67411A | Shaft - Fan | 1 |
| 36 | 67414A | Shaft - Drum Cover | 1 |
| 37 | 67911A | Spring | 1 |
| 38 | 13501A | Drum - RM | 1 |
| 39 | 67425A | Shaft Drum | 1 |
| NI | 18601A | Shaft Ass'y Drum includes 56, 39, 71 | (1) |
| 41 | 67313A | Spacer - Drum Bearing | 1 |
| 42 | 66918A | Retainer - Bearing | 1 |
| 45 | 962983 | Screw - 1/4-20 x 5/8 Pn St Mach | 4 |
| 46 | 34225A | Gasket - Plate Support | 1 |
| 47 | 26503C | Plate Support - Fan | 1 |
| 48 | 51111A | Bearing Ball | 1 |
| 49 | 62001A | Cap - Bearing | 1 |
| 50 * | 38109A | Seal Dust Pipe | 1 |
| 51 | 980657 | Washer - 17/64 I x 31/64 O x 1/16 | 7 |
| 52 | 962823 | Screw - 1/4 - 20 x 1/2 Pn St Mach | 3 |
| 53 | 77234A | Label, Lifting Warning | 1 |

| Ref # | Part No. | Description | Qty |
|-------|----------|---------------------------------|-----|
| 54 | 66169A | Pulley - Fan Shaft | 1 |
| 55 | 66167A | Pulley - Drum | 1 |
| 56 | 80501A | Key - 5/16 Sq. x 1.25 | 2 |
| 57 | 68703A | Washer - Drum Pulley | 1 |
| 58 | 980652 | Washer - .319 x .586 x .078 | 1 |
| 59 | 962258 | Screw - 5/16-18 x 1" Soc Cap | 1 |
| 60 | 26107C | Platform Motor | 1 |
| 61 | 962262 | Screw - 8-32 x 1/4 St St Cup Pt | 1 |
| 62 | 22101A | Cover-Drum | 1 |
| 63 | 62404A | Clamp - Bumper Rear | 1 |
| 64 | 962348 | Screw - 10-24 x 1/2 Flat St Cap | 1 |
| 65 | 31210A | Bumper - Drum Cover | 1 |
| 66 | 26900A | Ring - Lock-Pan-Dust | 1 |
| 67 | 67311A | Screw | 1 |
| 68 | 81900A | Nut - 7/16 -14 Hex St | 1 |
| 69 | 26100A | Pan - Dust | 1 |
| 70 | 61600A | Clip - Dust | 1 |
| 71 | 65301A | Key #606 | 1 |
| 72 | 920280 | Nut - 5/8 -18 x 3/8 Hex Jam | 1 |
| 73 | 87102A | Washer - .62 x 1.09 x .16 | 1 |
| 74 | 20400B | Arm Idler | 1 |
| 75 | 68000A | Stud - Idler | 1 |
| 76 | 87005A | Washer - .52 x 1.00 x 1.00 | 1 |
| 77 | 87101A | Washer - .50 X .12 Lock St | 1 |
| 78 | 920132 | Nut - 1/2-20 Hex Jam | 1 |
| 79 | 67813A | Spacer - Idler Bearing | 1 |
| 80 | 67701A | Sleeve - Idler | 1 |
| 81 | 902550 | Bearing | 1 |
| 82 | 67317A | Shaft - Idler | 1 |
| 83 | 34222A | Gasket - Pan Dust | 1 |
| 84 | 980651 | Washer-11/32 x 11/160 X 1/16 | 3 |
| 85 | 85811A | Screw - 3/8-18 x 3/4 | 3 |
| 86 | 962103 | Screw - 5/16-18 x 3/8 | 2 |
| 87 | 962216 | Screw - 3/8-16 x 1/4 | 4 |
| 88 | 962870 | Screw - 3/8-16 x 1 | 1 |
| 89 | 64460A | Handle Motor | 1 |
| 90 | 32357A | Cover Handle | 2 |
| 91 | 930087 | Rivet | 2 |
| 92 | 74044A | Plate Safety | 1 |
| 93 | 697502 | Strain Relief | 1 |
| 94 | 41305A | Capacitor Start | 2 |
| 95 | 41304A | Capacitor Run | 1 |
| 96 | 47378A | Switch Start | 1 |
| 97 | 962823 | Screw - 1/4-20 x 1/2 | 2 |
| 98 | 980614 | Washer | 2 |
| 99 | 45604A | Plug Locking | 1 |
| 100 | 41945A | Cord Motor | 1 |
| 101 | 915098 | Key 1/4-52 x 1 1/2 | 1 |
| 102 | 57712A | Ring Retaining | 1 |
| 103 | 87034A | Retainer Pulley | 1 |
| 104 | 962288 | Screw 3/8-16 x 1 | 1 |
| 105 | 67642A | Shim, Motor | 4 |

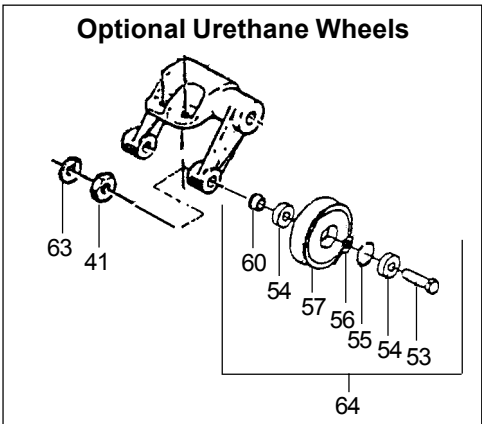
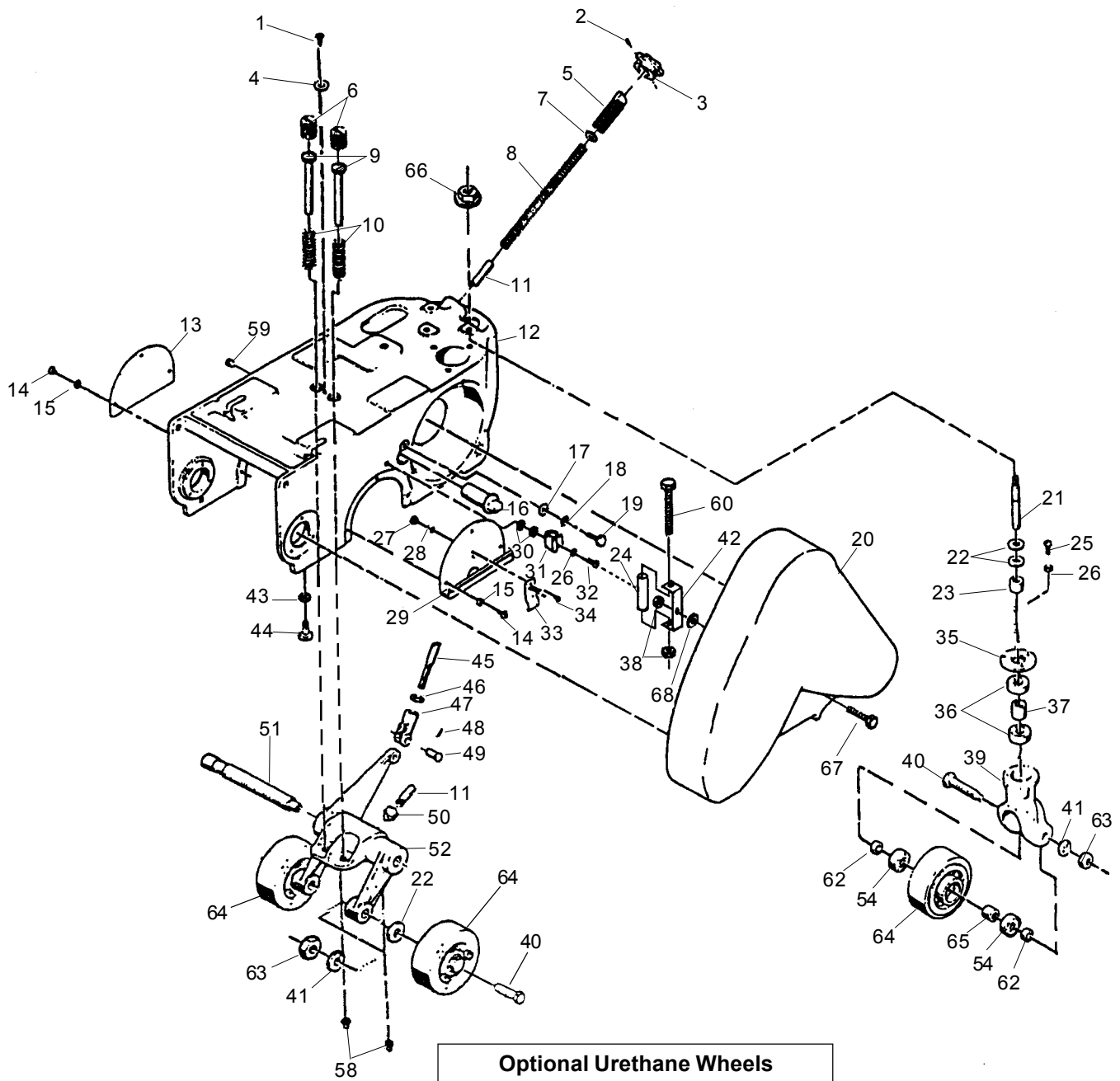
*NOTE: #50 not illustrated.

Motor Parts Not Illustrated

| Part # | Description | Qty. |
|--------|-------------|------|
| 50563A | End Bell | 1 |
| 52768A | Front Cover | 1 |
| 53998A | Fan | 1 |
| 52769A | Fan Cover | 1 |

| Part # | Description | Qty. |
|--------|-------------------|------|
| 51188A | Bearing Front | 1 |
| 902547 | Bearing Rear | 1 |
| 40316A | Armature Assembly | 1 |

AMERICAN SANDERS TECHNOLOGY
American 8 Floor Sander
Assembly Drawing #3 6/01



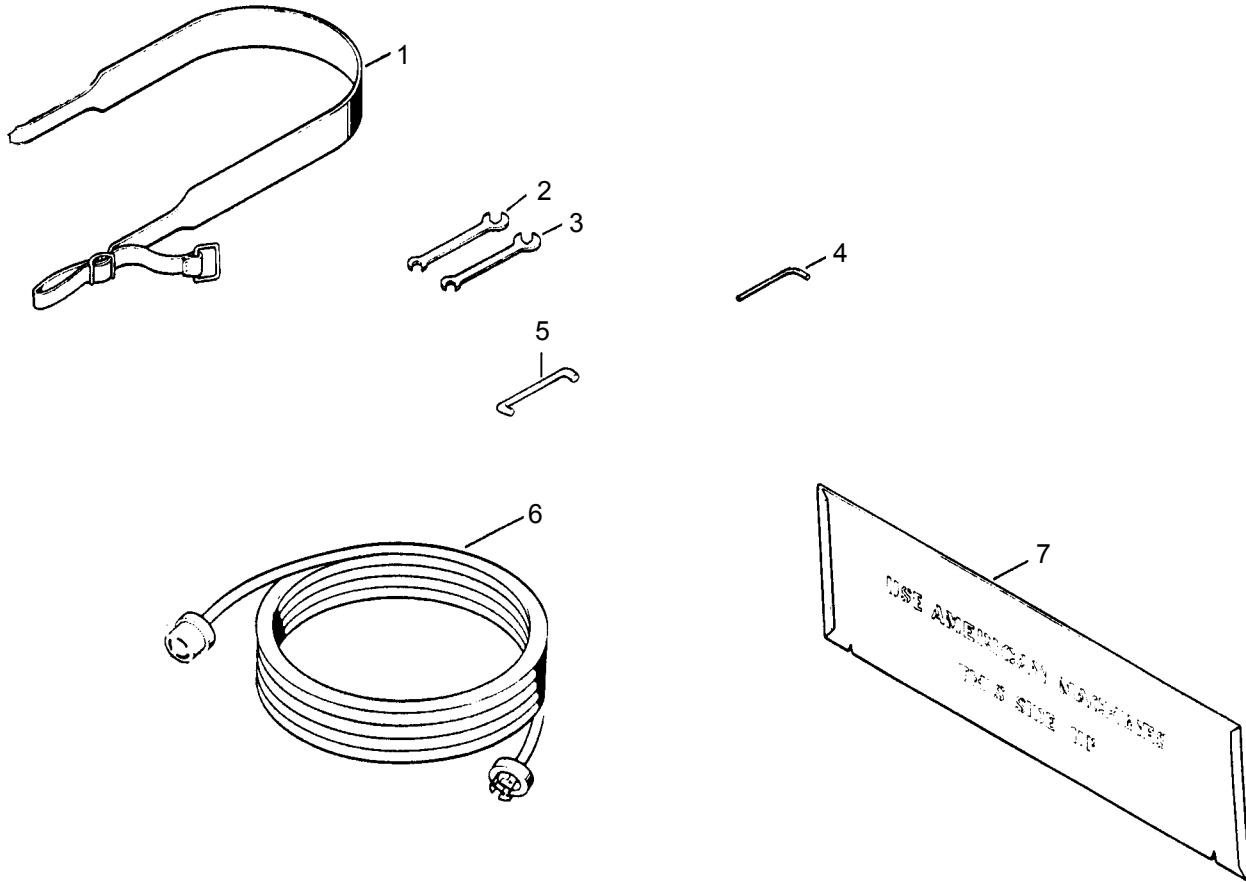
AMERICAN SANDERS TECHNOLOGY
American 8 Floor Sander
Assembly Parts List #3 6/01

07032C
07048C
07105A
07106A

| Ref. No | Part No. | Description | Qty | Qty |
|---------|----------|----------------------------------|-----|-----|
| 1 | 962052 | Screw - 10-24 x 1/2 Fit St Mach | 1 | 1 |
| 2 | 962161 | Screw - 10-24 x 3/8 St St Cuppt | 2 | 2 |
| 3 | 25200C | Knob - Hand | 1 | 1 |
| 4 | 66912A | Retainer, Screw Adjusting | 1 | 1 |
| 5 | 67309A | Screw | 1 | 1 |
| 6 | 67312A | Screw | 2 | 2 |
| 7 | 87000A | Washer | 1 | 1 |
| 8 | 67905A | Spring | 1 | 1 |
| 9 | 66123A | Plunger, Spring | 2 | 2 |
| 10 | 67906A | Spring | 2 | 2 |
| 11 | 67107A | Rod - Pivot | 1 | 1 |
| 12 | 23405B | Frame, Main | 1 | 1 |
| 13 | 66628C | Plate, Cover Wheel | 1 | 1 |
| 14 | 962015 | Screw, 10-24 x 3/8 Pn St Mach | 6 | 6 |
| 15 | 980650 | Washer, Lock | 6 | 6 |
| 16 | 62801A | Eccentric | 1 | 1 |
| 17 | 87007A | Washer, Control Shaft Eccentric | 1 | 1 |
| 18 | 980614 | Washer, #1114 Shakeproof | 1 | 1 |
| 19 | 85700A | Screw, 1/4-20 x 1" Hex | 1 | 1 |
| 20 | 70224B | Kit Guard, Belt | 1 | 1 |
| 21 | 60715B | Bolt, Pivot | 1 | 1 |
| 22 | 87003A | Washer, .59 x 1.00 x .09 Flat | 4 | 2 |
| 23 | 67812A | Spacer, Bracket | 1 | 1 |
| 24 | 51069A | Tube, Latch | 1 | 1 |
| 25 | 962823 | Screw, 1/4-20 x 1/2 Pn St Mach | 3 | 3 |
| 26 | 980657 | Washer, 17/64 I x 31/64 O x 1/16 | 4 | 4 |
| 27 | 920112 | Nut, #6-32 Hex | 2 | 2 |
| 28 | 980607 | Washer, #1106 Shakeproof | 2 | 2 |
| 29 | 66627A | Cover, Truck Wheel | 1 | 1 |
| 30 | 87004A | Washer, Fit St | 2 | 2 |
| 31 | 61600A | Clip, Dust | 1 | 1 |
| 32 | 962983 | Screw, 1/4-20 x 5/8 Pn St Mach | 1 | 1 |
| 33 | 63904A | Clamp, Belt Guard | 1 | 1 |
| 34 | 85313C | Screw, 6-32 x 3/8 Pn St Mach | 2 | 2 |
| 35 | 66913A | Retainer, Bearing | 1 | 1 |
| 36 | 51112A | Bearing, Ball | 2 | 2 |
| 37 | 67821A | Spacer | 1 | 1 |
| 38 | 81102A | Nut, 1/4-20 ESNA | 2 | 2 |
| 39 | 29403C | Yoke, Wheel | 1 | 1 |
| 40 | 60101A | Axle | 3 | 1 |
| 41 | 87101A | Washer | 3 | 3 |
| 42 | 51071A | Bracket, Latch | 1 | 1 |
| 43 | 920160 | Nut 5/16 -18 | 1 | 1 |
| 44 | 86201A | Screw 5/16 -18 x 1" | 1 | 1 |
| 45 | 67143A | Rod, Control | 1 | 1 |
| 46 | 920260 | Nut 3/8 -16 x 5/16 | 1 | 1 |
| 47 | 53917B | Clevis, Control Rod | 1 | 1 |
| 48 | 925036 | Pin, Cotter 3/32 x 3/4 | 1 | 1 |
| 49 | 66503A | Pin, Fork | 1 | 1 |
| 50 | 62000A | Nut, End | 1 | 1 |
| 51 | 67412A | Shaft, Control | 1 | 1 |
| 52 | 21101A | Bracket, Truck Wheel | 1 | 1 |
| 53◆ | 60547A | Axle | - | 2 |
| 54◆ | 51225A | Bearing, Ball | 6 | 6 |
| 55◆ | 167312 | Ring, Retainer | - | 2 |
| 56◆ | 60481A | Spacer | - | 2 |
| 57◆ | 50992A | Wheel, Asm. | - | 2 |
| 58 | 54000A | Fitting, Lub | 2 | 2 |
| 59 | 57101A | Plug, Soft | 1 | 1 |
| 60◆ | 60544A | Spacer | 2 | 2 |
| 62 | 67810A | Spacer | 2 | 2 |
| 63◆ | 920196 | Nut, 1/2 - 13 | 3 | 3 |
| 64 | 59928A | Wheel (Steel) | 3 | - |
| ◆ | 10243A | Kit, Wheel (Urethane)(Optiona) | - | - |
| ◆ | 59907A | Wheel (Canvas) | - | 1 |
| 65 | 67817A | Spacer | 1 | - |
| 66 | 81209A | Nut, 1/2-13 Flange | 1 | 1 |
| 67 | 85806A | Screw, 1/4-20 x 3/4 | 1 | 1 |
| 68 | 87007A | Washer, 1/4- 3/4 x .06 | 1 | 1 |

NOTE: ◆ indicates a change has been made since the last publication of this manual.

AMERICANSANDERSTECHNOLOGY
American 8 Floor Sander
Accessories Drawing & Parts List #4 12/00



| Ref. # | Part No. | Description | Qty |
|--------|----------|--|-----|
| 1 | 60724A | Belt, Operating | 1 |
| 2 | 59811A | Wrench, End $\frac{3}{4} \times \frac{7}{16}$ | 1 |
| 3 | 59810A | Wrench, End $\frac{9}{16} \times \frac{7}{16}$ | 2 |
| 4 | 59815A | Wrench $\frac{5}{32}$ | 1 |
| 5 | 64415A | Handle, Carrying | 1 |
| 6 | 42201A | Cord Set 230V 60Hz | 1 |
| | 40010A | Cable Australia | 1 |
| 7 | 68315A | Template | 1 |

IVIE Enterprises

www.ivie-ent.com Ph:(918)254-5161 or (888)262-5161 Fax:(918)250-4807

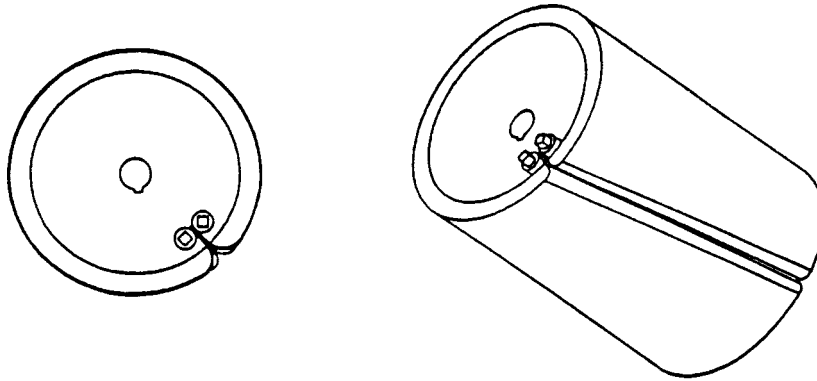
Chatter □ Wave Prevention

American Sanders Technology Sanders are designed and manufactured to the most rigid tolerances. However, after a finishing cut it is possible to see “chatter” or “waves”.

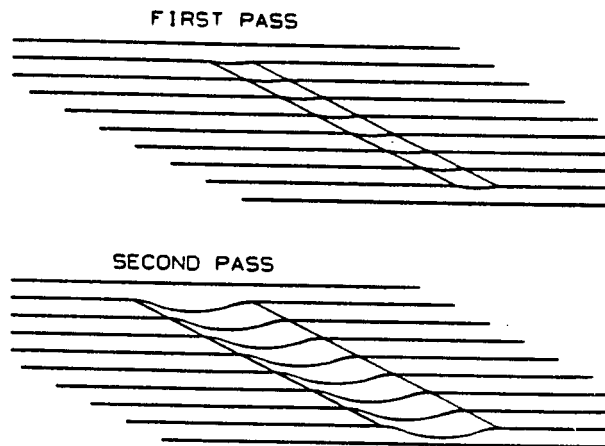
The best guarantee to remove the chatter is to finish the floor with a rotating horizontal sander, such as American Sanders Technology’s Sander 16.

To minimize chatter when using a belt or drum sander the following steps should be taken:

- 1) DRUM PAPER...insure the paper is secured in the slot, but not too tight. Paper that is too tight will force the drum slot wider, leaving a “slot mark chatter” on the floor.



- 2) DRUM MARKS.....are caused by the operator lowering the drum to the floor without forward traverse. These marks should be removed by cutting at a 45 degree angle to the mark. Cutting at the mark while maintaining the same path will only increase the mark depth and width.



IVIE Enterprises

www.ivie-ent.com

Ph:(918)254-5161 or (888)262-5161 Fax:(918)250-4807

Chatter Wave Prevention (cont)

- 3) UNEVEN WALKING PACE..... can leave lengthy “waves”. The machine cuts more material during the slower pace. Pay particular attention to a steady, even pace.
- 4) EXCESSIVE LIGHT CUTS.... may reveal high spots on the paper/contact wheel and cause chatter. Take a heavier cut and increase the pace.
- 5) DEBRIS.... lodged between the paper and the drum will leave chatter. On a belt sander, debris may be adhered to the drum. Insure the drum is clean and free of debris before placing the paper on.
- 6) SANDER PAPER QUALITY....may vary. Belt seams can be thicker on low quality paper and cause chatter. Use only American Sanders Technology specified sandpaper.

PROPER CARE OF YOUR MACHINE CAN MINIMIZE CHATTER AND WAVES.

- 1) V-BELTS.... can cause vibration and chatter if they are of low quality. Use only belts specified by American Sanders Technology.
- 2) TRUCK AND CASTER WHEELS....with flat spots, out-of-roundness, or debris adhered to their surface can cause “waves” or a “chatter effect”. Always clean and inspect all wheels before starting to sand, and before the finish cut. Replace or true the wheels if found to be out-of-round.
- 3) DUST PICK-UP SHOES.....may need adjusted differently for different materials that are to be sanded. An improperly adjusted shoe will leave trailing debris that will be run over by the wheels and cause “random waves”.
- 4) CONTACT WHEELS (DRUMS).....may be out-of-round and cause “chatter”. Contact your American Sanders Technology dealer for assistance to true or replace the drum.
- 5) BEARINGS.....in the motor, drum, or fan system may become worn and induce vibration which could cause “chatter”.
- 6) PULLEYS.....that are damaged or severely worn can induce vibration and cause “chatter”. Contact your American Sanders Technology dealer for assistance.

American Sanders Technology is not responsible for rework of floors that are unacceptable to the customer. It is your responsibility to insure your equipment is in proper operating order, and that you use the right machine for the job.

IVIE Enterprises

www.ivie-ent.com

Ph:(918)254-5161 or (888)262-5161 Fax:(918)250-4807