
Clarke®

Operator's Manual
Manuel d'utilisation
Libro de Instrucciones



CTV
Wet/Dry Vacuum
120V

READ THIS BOOK

This book has important information for the use and safe operation of this machine. Failure to read this book prior to operating or attempting any service or maintenance procedure to your Clarke machine could result in injury to you or to other personnel; damage to the machine or to other property could occur as well. You must have training in the operation of this machine before using it. If your operator(s) cannot read English, have this manual explained fully before attempting to operate this machine.

All directions given in this book are as seen from the operator's position at the rear of the machine.

For new books write to: Clarke®, 2100 Highway 265, Springdale, Arkansas 72764.

Table of Contents

Important Safety Instructions	5
Specifications and Accessories	11
Grounding Instructions	14
How To Assemble the Machine	16
How To Prepare The Machine For Operation	16
Machine Operation	18
Maintenance and Repair	22
Troubleshooting	24
Recommended Spare Parts	25

Section II Parts and Service Manual

CTV 15 & 20 Head Assembly Drawing	30
Parts List	31
CTV 7 Assembly Drawing	32
Parts List	33
CTV 15 & 20 Tank Assembly Drawing and Parts List	34
CTV 15 & 20 Frame Assembly Drawing and Parts List	35
CTV 7, 15 & 20 Squeegee Assembly Drawing	36
Parts List	37
CTV 7, 15 & 20 Accessory Tools	38
CTV 15 & 20 Electrical Schematic	39
CTV 7 Electrical Schematic	40

IMPORTANT SAFETY INSTRUCTIONS



WARNING



AVERTISSEMENT



ADVERTENCIA



DANGER:

Failure to read and observe all **DANGER** statements could result in severe bodily injury or death. Read and observe all **DANGER** statements found in your Owner's Manual and on your machine.



WARNING:

Failure to read and observe all **WARNING** statements could result in injury to you or to other personnel; property damage could occur as well. Read and observe all **WARNING** statements found in your Owner's Manual and on your machine.



CAUTION:


Failure to read and observe all **CAUTION** statements could result in damage to the machine or to other property. Read and observe all **CAUTION** statements found in your Owner's Manual and on your machine.





WARNING: To reduce the risk of fire, electric shock, or injury:


1. Do not leave machine when plugged in. Unplug from outlet when not in use and before servicing.
2. To reduce the risk of electric shock use indoors only.
3. Do not allow to be used as a toy. Close attention is necessary when used by or near children.
4. Use only as described in the manual. Use only manufacturer's recommended attachments.
5. Do not use with damaged cord or plug. If machine is not working as it should, has been dropped, damaged, left outdoors, or dropped into water, return it to a service center.
6. Do not pull or carry by cord, use cord as a handle, close a door on cord, or pull cord around sharp edges or corners. Do not run machine over cord. Keep cord away from heated surfaces.
7. Do not unplug by pulling on cord. To unplug, grasp the plug, not the cord.
8. Do not handle plug or machine with wet hands.
9. Do not put any object into openings. Do not use with any opening blocked; keep free of dust, lint, hair and anything that may reduce air flow.
10. Keep hair, loose clothing, fingers, and all parts of body away from openings and moving parts.
11. The following materials must not be picked up with the machine: Hot materials (glowing cigarettes, hot ashes, etc.); Inflammable, explosive or aggressive fluids (e.g. gasoline, solvents, acids, alkalines, etc.); Inflammable, explosive dusts (e.g. magnesium or aluminum dust, etc.).
12. Do not use without dust bag and/or filters in place. Use the machine only with an undamaged filter element.
13. Turn off all controls before unplugging.
14. Use extra care when cleaning on stairs.
16. Connect to properly grounded outlet. See "Grounding Instructions".


SAVE THESE INSTRUCTIONS


 **DANGER:** Failure to read the Owner's Manual prior to operating or attempting any service or maintenance procedure to your Clarke machine could result in injury to you or to other personnel; damage to the machine or to other property could occur as well. You must have training in the operation of this machine before using it. If your operator(s) cannot read English, have this manual explained fully before attempting to operate this machine.


 **DANGER:** Operating a machine that is not completely or fully assembled could result in injury or property damage. Do not operate this machine until it is completely assembled. Inspect the machine carefully before operation. Use only as described in this manual. Use only Clarke's recommended attachments and replacement parts.

 **WARNING:** Operating a machine without observing all labels, decals, etc., could result in injury or damage. Read all machine labels before attempting to operate the machine. Make sure all of the labels are attached or fastened to the machine. Get replacement labels and decals from your Clarke distributor.


 **WARNING:** Before connecting any appliance to the appliance plug socket, the machine must always be switched off. If appliances are connected to the appliance plug socket, ensure that these appliances are also switched off when being connected to the appliance plug socket. See "Appliance Plug Socket" in the "Grounding Instructions" section in of this manual.

 **CAUTION:** Making technical modifications to the machine could endanger your safety. Do not make any technical modifications to the machine.

 **CAUTION:** Never spray the top section of the machine with water. Can cause danger to persons or danger of short circuits.

 **CAUTION:** Wrap cord around handle when machine is not in use. Use caution not to run over cord while machine is in use.

 **CAUTION:** This machine is not suitable for picking up health endangering dust.

 **CAUTION:** If foam/liquid comes out, switch off immediately.

SPECIFICATIONS & ACCESSORIES

Model Code #	02170A	02172A	02174B	02176B	02178B	02180B	02182B
Model Description	CTV7	CTV7 w/AS/E	CTV15	CTV15	CTV20	CTV15 w/squ.	CTV20 w/squ.
Voltage (V)	120	120	120	120	120	120	120
Frequency (Hz)	50/60	50/60	50/60	50/60	50/60	50/60	50/60
Power (Watts)	1200	1300	1200	1300	1300	1300	1300
Connected load for appliance plug socket	---	600 Watts	---	---	---	---	---
Volume Air Flow(CFM)	120	110	120	110	110	110	110
Vacuum Motor	Single Stage	Dual Stage	Single Stage	Dual Stage	Dual Stage	Dual Stage	Dual Stage
Static Water Lift (inches) (inches H ₂ O)	65	95	65	95	95	95	95
Cord Length (feet)	16	16	50	50	50	50	50
Tank Volume (gal.)	7	7	15	15	20	15	20
Width (inches)	14.5	14.5	24	24	24	24	24
Depth (inches)	14	14	24	24	24	24	24
Height (inches)	21	21	38	38	38	38	38
Weight (lbs) Machine	14	16	44	45	48	45	48
Weight (lbs) Shipping	16	18	48	49	52	61	64
Order # for bag-type filter elements (pack of 5)	60910	60910	70007041	70007041	70007041	70007041	70007041
Order # for permanent filter element (unit)	11754000	11754000	11754000	11754000	11754000	11754000	11754000
Clothe Filter Liner / Washable	61156103	61156103	61156103	61156103	61156103	61156103	61156103
Squeegee Floor Tool	---	---	---	---	---	70007035	70007035
Replacement Squeegee Blades	---	---	---	---	---	30292A	30292A

GROUNDING INSTRUCTIONS

This appliance must be grounded. If it should malfunction or breakdown, grounding provides a path of least resistance for electric current to reduce the risk of electric shock. This appliance is equipped with a cord having an equipment-grounding conductor and grounding plug. The plug must be plugged into an appropriate outlet that is properly installed and grounded in accordance with all local codes and ordinances.

- ⚠ WARNING:** Improper connection of the equipment-grounding conductor can result in a risk of electric shock. Check with a qualified electrician or service person if you are in doubt as to whether the outlet is properly grounded. Do not modify the plug provided with the product - if it will not fit the outlet, have a proper outlet installed by a qualified electrician.

This appliance is for use on a nominal 120-volt circuit and has a ground plug that looks like the plug illustrated in figure 1. Make sure that the appliance is connected to an outlet having the same configuration as the plug. No adapter should be used with this appliance.

- ⚠ WARNING:** To prevent possible electric shock, protect the machine from rain. Keep the machine in a dry building.

- ⚠ WARNING:** To prevent possible electric shock, always use a 3-wire electrical system connected to the electrical ground. For maximum protection against electrical shock, use a circuit that is protected by a ground fault circuit interrupter. Consult your electrical contractor.

- ⚠ WARNING:** Do not cut, remove or break the ground pin. If the outlet does not fit the plug, consult your electrical contractor.

- ⚠ WARNING:** Have worn, cut or damaged cords replaced by an authorized service person.

EXTENSION CORDS

Use only an approved extension cord with three conductors, a plug with three terminals, and a connector body with three holes. The machine has a power cord with wire size 16 AWG (AWG means American Wire Gauge).

- ⚠ WARNING:** If you use an extension cord, use an extension cord with minimum wire size 14 AWG. Do not use an extension cord longer than 50 feet. Do not join two extension cords.

APPLIANCE PLUG SOCKET

Before connecting any appliance to the appliance plug socket, the machine must always be switched off. If appliances are connected to the appliance plug socket, ensure that these appliances are also switched off when being connected to the appliance plug socket.

- ⚠ CAUTION:** The operating instructions and the safety precautions contained therein must be observed when using appliances connected to the appliance plug socket of the machine.

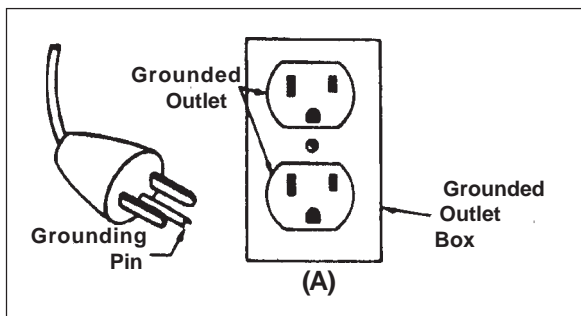


Figure 1

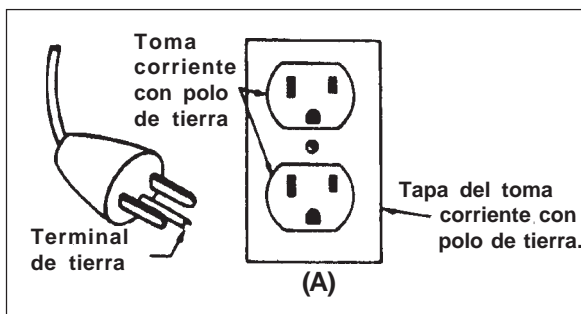


Figure 1a

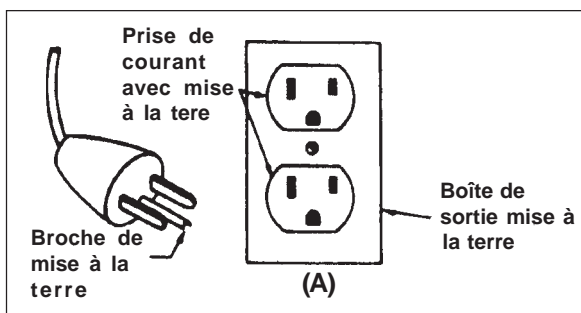


Figure 1b

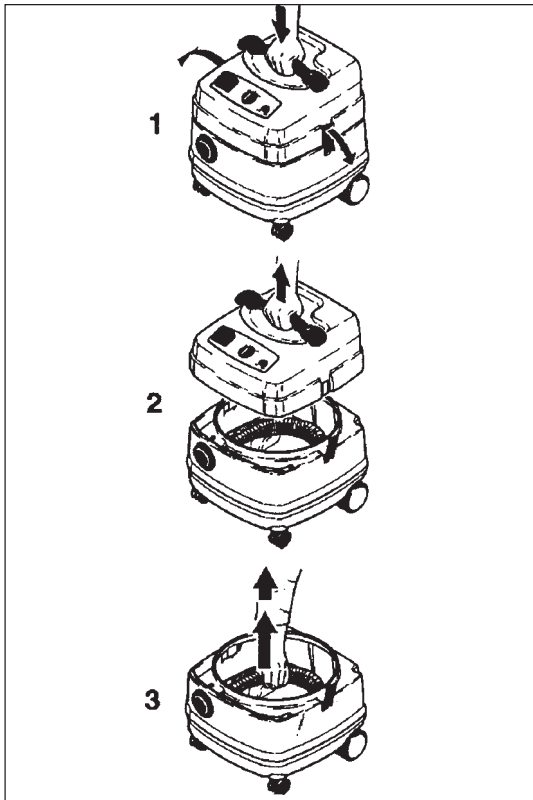


Figure 2

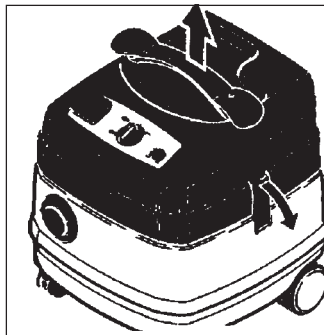


Figure 3

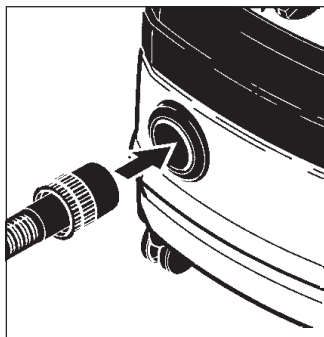


Figure 4

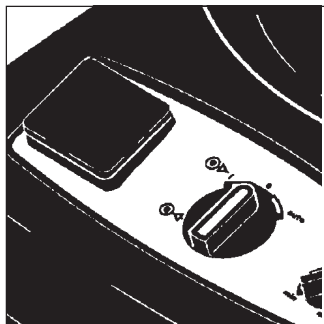


Figure 5

HOW TO ASSEMBLE THE MACHINE

CAUTION!

On delivery, the accessories - are lying in the tank and must be removed before the machine is used for the first time. See figure 2 (figure is for CTV 7, but other units are similar).

To assemble the machine, remove the machine top section:

The power cord must not yet be inserted into a plug socket.

1. Open the retaining clamps and lift off the machine top section (Figure 3).
2. Place a bag-type filter into the tank as described in the instructions printed on the filter.
3. Fit the machine top section back on the tank, and close the retaining clamps.
4. Connect the suction hose. The "Wap Multifit" enables any Clarke suction hoses (27, 32, 36, 50 mm diameter) to be connected to the machine (Figure 4).

HOW TO PREPARE THE MACHINE FOR OPERATION

To prepare the machine for operation, follow this procedure:

1. Remove tool kit from carton.
2. Remove head assembly from tank before removing tank from carton.
3. Remove tank assembly from carton.
4. Attach head assembly to tank.

Ensure that the machine is switched off and insert the plug of the power cord into a properly installed and fused plug socket with ground.

Connecting Electric Tools - (For CTV 7 AS)

Connect the electric tool to the appliance plug socket on the control panel (Figure 5).


Before connecting a tool, ensure that both the machine and the tool are switched off.

For maximum power consumption of the electric tool to be connected, see the Specification Table on page 5.

MACHINE OPERATION

Picking Up Dry Substances

Before picking up dry substances, the bag-type filter should always be installed in the tank. It is then easy to dispose of the material picked up and the service life of the main filter element is significantly increased.


 **WARNING: Inflammable substances must not be picked up with the machine!**

After picking up liquids, the filter element is damp. Damp filter elements can clog more quickly when dry substances are picked up. For this reason, the filter element should be dried or replaced before picking up any dry substances.

Picking Up Liquids

For both wet and dry applications be sure to leave the cartridge filter and the cloth filter in place around the float cage. Also be sure to frequently clean the filters. This is especially true when the vacuum is being used with strippers and wax.

Daily Maintenance

 **CAUTION: Strippers and some detergents produce foam which will damage the vacuum motors. The vacuum float shut-off may not be sensitive to all foams. Be sure to check that the tank is not filling with foam. Use a defoaming agent to avoid pulling foam through the vacuum motor. Should the vacuum motor become wet, remove source of overflow and immediately run vacuum motor open to purge the motor dry. Both the cartridge filter and the cloth filter should be rinsed and dried to remove stripper or wax. Do not allow stripper or wax to dry in the filters, as this will adversely affect performance.**

1. Drain and rinse tank and remove head assembly to allow drying.
2. Remove, rinse, and clean filters and allow to dry.
3. Inspect the power cord and hoses for damage.

 **WARNING: Inflammable liquids must not be picked up with the machine!**


Switching On The Machine (CTV 7, 15, 20)

Turn the switch to position "I" .

Switching On The Machine (CTV 7 AS)

Two operating modes are possible.

1. Switch position "I":
The machine motor starts immediately.
2. Switch position "auto":
The machine motor starts only when the tool connected to the appliance plug socket is switched on.

 **CAUTION: Before turning the switch to position "auto", ensure that the tool connected to the appliance plug socket is switched off.**

The motor speed and thus the suction power can be varied at the suction force regulator. This permits a precise adaptation to different substances to be picked up.

Operating The Machine

If using machine for liquid pickup, follow this procedure:

1. Leave filter cartridge and cloth filter in place.

NOTE: This machine has a float shut-off. When the water raises the float, the air stops moving through the machine.

2. Turn machine on and begin vacuuming. The ON/OFF switch is on top of the vacuum head assembly. Put the switch in the "I" position to start the motor. Put the switch in the "O" position to stop the motor.
3. When cleanup is complete, empty the liquid by opening the drain valve on the drain hose. See figure 6.
4. For best performance, clean and rinse cloth and permanent filters.

If using for dry pickup or to remove shampoo from carpet, follow this procedure:

1. Use the filter bag. This will keep debris from entering the vacuum motor.
2. Turn machine on and begin vacuuming. If pickup efficiency decreases, stop the machine.
3. Remove the foam, liquid, dirt and carpet fibers from the tank and from the filter bag.

NOTE: Have an extra clean filter bag available for continuous operation. Use clean filter bag while other filter bag is being laundered and dried.

4. For best performance, clean the mesh screen around the float often.

There are no user serviceable parts. All repairs must be done by authorized personnel only.

After Finishing Work

1. Switch off the machine and pull the plug of the power cord out of the plug socket.
2. Wind up the power cord.

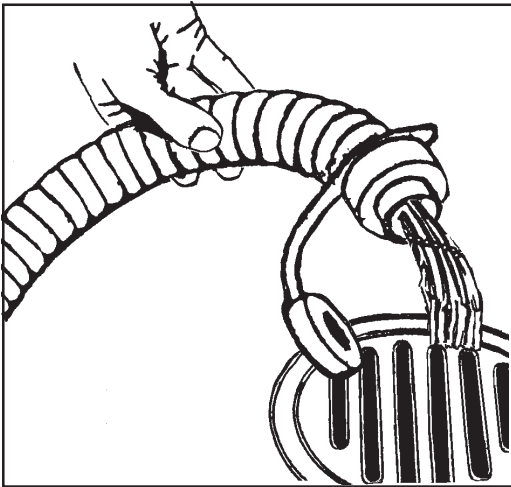


Figure 6

MACHINE OPERATION

Changing The Bag Type Filter

1. Pull the bag-type filter sleeve off the inlet fitting. See Figure 7.
2. Dispose of the used bag-type filter in accordance with the local waste disposal regulations.
3. Place a new bag-type filter into the tank as described in the instructions printed on the filter.

IMPORTANT!

Push the bag-type filter sleeve completely onto the inlet fitting.

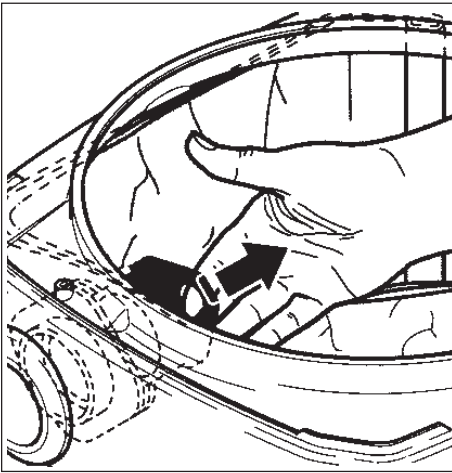


Figure 7

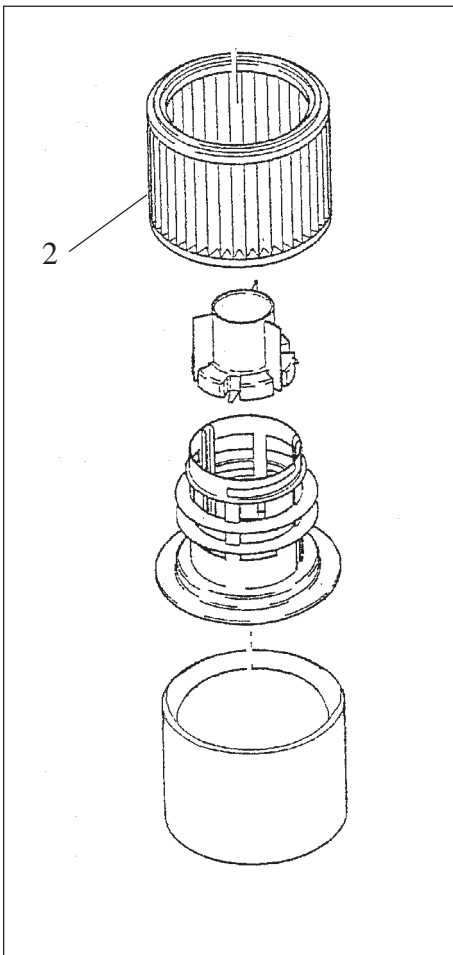


Figure 8

Replacing The Filter Element

1. Switch off the machine and pull the plug of the power cord out of the plug socket.
2. Remove the machine top section from the dirt tank and place to one side with the filter element facing upwards (Figure 8).
3. Remove the outer strainer filter bag.
4. Unscrew the filter retaining nut (1) and remove.
5. Pull off the filter element (2).
6. Push on a new filter element.
7. Fit the filter retaining washer and tighten the retaining nut.
8. Dispose of the used filter element in accordance with the local waste disposal regulations.
9. Reinstall the outer strainer filter bag.

MAINTENANCE AND REPAIR

⚠ CAUTION: Before cleaning and servicing the machine, always remove the power cord.

Carry out only maintenance operations described in these operating instructions. Use only original Clarke spare parts.

⚠ CAUTION: Do not make any technical modifications to the machine. Your safety could be endangered as a result!

For all other maintenance and repair work, please contact an authorized Clarke Service department.

TROUBLESHOOTING

Problem	Cause	Action
Motor does not start	<ol style="list-style-type: none"> 1. The fuse or plug socket has blown. 2. Overload protection switch has tripped. 	<ol style="list-style-type: none"> 1. Reset the fuse 2. Allow the machine to cool down approximately 5 minutes; if the machine does not start again automatically, contact the Service Dept.
Reduced suction power	<ol style="list-style-type: none"> 1. Bag-type filter full. 2. Suction hose clogged. 3. Filter element clogged. 	<ol style="list-style-type: none"> 1. Replace bag-type filter. 2. Clean suction hose. 3. Clean and replace filter element.
No suction power during wet cleaning.	<ol style="list-style-type: none"> 1. Tank full (float switch closing off the suction opening). 	<ol style="list-style-type: none"> 1. Empty tank.

DETECCIÓN DE PROBLEMAS

Problema	Causa	Acción
El motor no enciende.	<ol style="list-style-type: none"> 1. Saltó el fusible o no funciona el tomacorriente. 2. Se disparó el mecanismo de interrupción por sobrecarga. 	<ol style="list-style-type: none"> 1. Coloque nuevamente el fusible. 2. Deje que la máquina se enfríe por aproximadamente 5 minutos; si la máquina no vuelve a encenderse en forma automática, llame al Departamento de servicio.
Baja potencia de aspiración.	<ol style="list-style-type: none"> 1. Filtro tipo bolsa lleno. 2. Manguera de aspiración obstruida. 3. Elemento filtrante obstruido. 	<ol style="list-style-type: none"> 1. Cambie el filtro tipo bolsa. 2. Limpie la manguera de aspiración. 3. Limpie y cambie el elemento filtrante.
No hay potencia de aspiración durante la limpieza en húmedo.	<ol style="list-style-type: none"> 1. Depósito lleno (el interruptor de flotación cierra la abertura de aspiración.) 	<ol style="list-style-type: none"> 1. Vacíe el depósito.

DIAGNOSTIC

Problème	Cause	Action
Le moteur ne démarre pas.	<ol style="list-style-type: none"> 1. Le fusible ou la prise a sauté. 2. Le commutateur de protection contre les surcharges s'est déclinché. 	<ol style="list-style-type: none"> 1. Remplacez un fusible. 2. Laissez la machine refroidir pendant environ 5 minutes; si la machine ne démarre toujours pas automatiquement, contactez le Service des Réparations.
Force d'aspiration réduite.	<ol style="list-style-type: none"> 1. Le filtre de type sac est plein. 2. Le tuyau d'aspiration est bouché 3. L'élément de filtrage est bouché. 	<ol style="list-style-type: none"> 1. Remplacez le filtre de type sac. 2. Nettoyez le tuyau d'aspiration. 3. Nettoyez et remplacez l'élément de filtrage.
Aucune force d'aspiration pendant un nettoyage humide.	<ol style="list-style-type: none"> 1. Le réservoir est plein (le commutateur à flotteur refermant l'ouverture d'aspiration). 	<ol style="list-style-type: none"> 1. Videz le réservoir.

Clarke®
CTV 7, 15 & 20
Recommended Spare Parts

Part No.	Description
60608	Caster
60610	Gasket, Vacuum
60867	Switch, Main Power
11754000	Filter, Permanent
21448070	Knob, Squeegee
26771800	Cord, Power
26771900	Cord, Power
27000410	Frame, Squeegee Weldment
27000411	Retainer, Squeegee Blade
27000414	Wheel, Squeegee
30001200	Foam, 20 x 60
30001504	Hose, Vac (2 meter)
30001505	Hose, Vac (4 meter)
30001506	Hose, Tools Assembly (15/20 Gal.)
30001507	Hose, Drain Assembly
30001508	Hose, Squeegee
60608100	Caster
61156102	Filter Bag, 15/20 Gallon
70002112	Motor, Vacuum Single Stage
70003311	Motor, Vacuum Two Stage
70000316	Brush Carbon Single Stage
70000316	Brush Carbon Two Stage
70007035	Complete Squeegee Assembly Kit
70007039	Adapter, Hose to 1½" Wand
70020032	Wheel
60910	Filter Bag, 7 Gallon (pkg. of 5)
90000502	Hose, Tool Assembly (7 Gal.)
30292A	Blade, Squeegee

Clarke[®]

CTV

Wet/Dry Vacuum

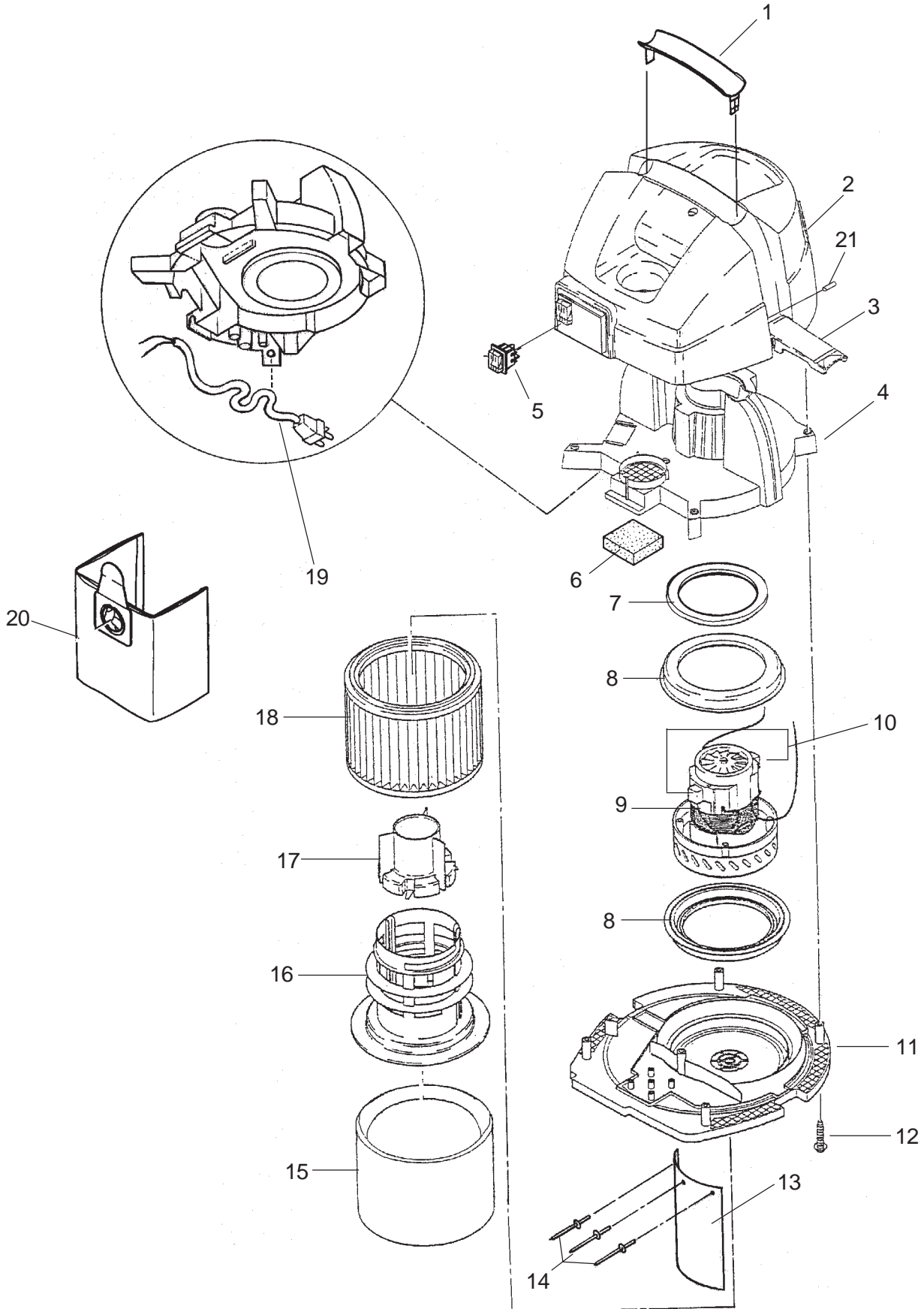
120V

Section II

Parts and Service

(70973A)

Clarke®
CTV 15 & 20
Head Assembly Drawing 3/05



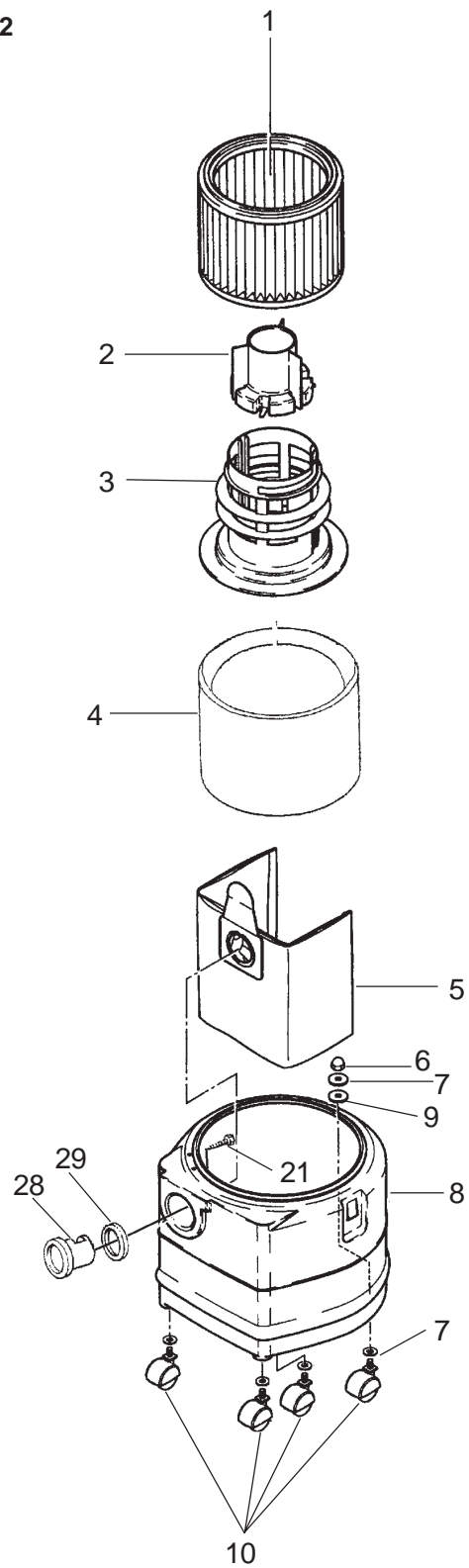
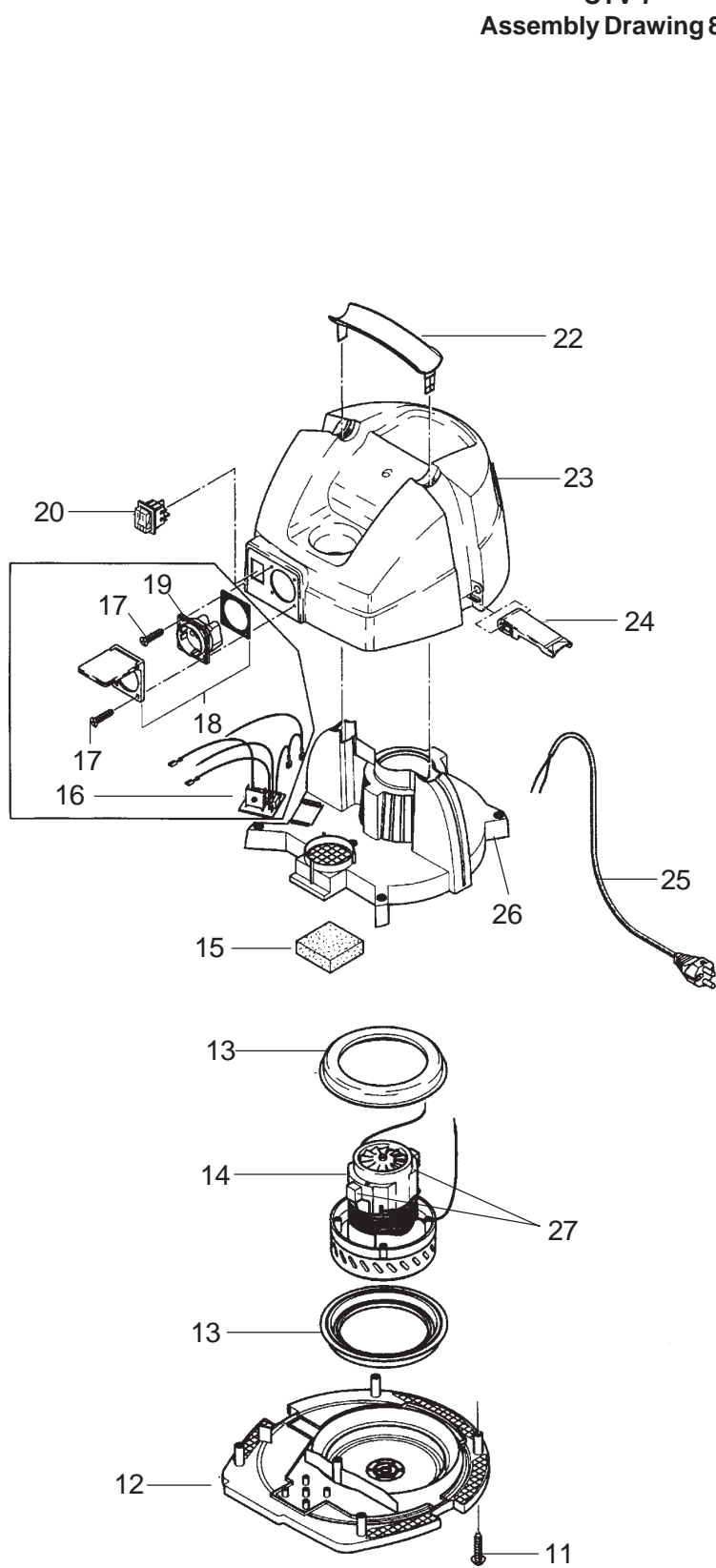
Clarke®
CTV 15 & 20
Head Assembly Parts List 3/05

			02178B	02182B	02180B	02176B	02174B
Ref.	Part No.	Description	Qty	Qty	Qty	Qty	Qty
1	60603000	Handle	1	1	1	1	1
2	60601000	Cover, Top	1	1	1	1	1
3◆	538423	Clamp	2	2	2	2	2
4	60604000	Housing, Upper	1	1	1	1	1
5	60867	Switch, Main Power	1	1	1	1	1
6	30001200	Foam, 20 x 60	1	1	1	1	1
7	60610200	Ring Distance	1	1	1	1	-
8	60610	Gasket, Vacuum Motor	2	2	2	2	2
9	70002112	Motor, 127V Single Stage	-	-	-	-	1
	70003311	Motor, 127V Two Stage	1	1	1	1	-
10	70000316	Brush Carbon Motor (Single Stage)	-	-	-	-	1
	70000316	Brush Carbon Motor (Two Stage)	1	1	1	1	-
11	60605000	Housing, Bottom (Single Stage)	-	-	-	-	1
	60605010	Housing, Bottom Two Stage	1	1	1	1	-
12	NA	Screw, M5 x 20, Phillips Self Thread	5	5	5	5	5
13	27000436	Deflector, (Perm. Filter)	1	1	1	1	1
14	NA	Rivet, 4mm x 12mm, Alum. Closed	3	3	3	3	3
15	61156103	Filter, Cloth	1	1	1	1	1
16	60607000	Cage, Float	1	1	1	1	1
17	60606000	Float	1	1	1	1	1
18	11754000	Filter, Permanent	1	1	1	1	1
19	26771900	Cord, Power	1	1	1	1	1
20	61156102	Filter Bag, 15/20 Gal.	1	1	1	1	1
21◆	53839A	Pin, 3/8 x 44 mm	2	2	2	2	2

NA = Not Available

NOTE: ◆ indicates a change has been made since the last publication of this manual.

Clarke®
CTV 7
Assembly Drawing 8/02

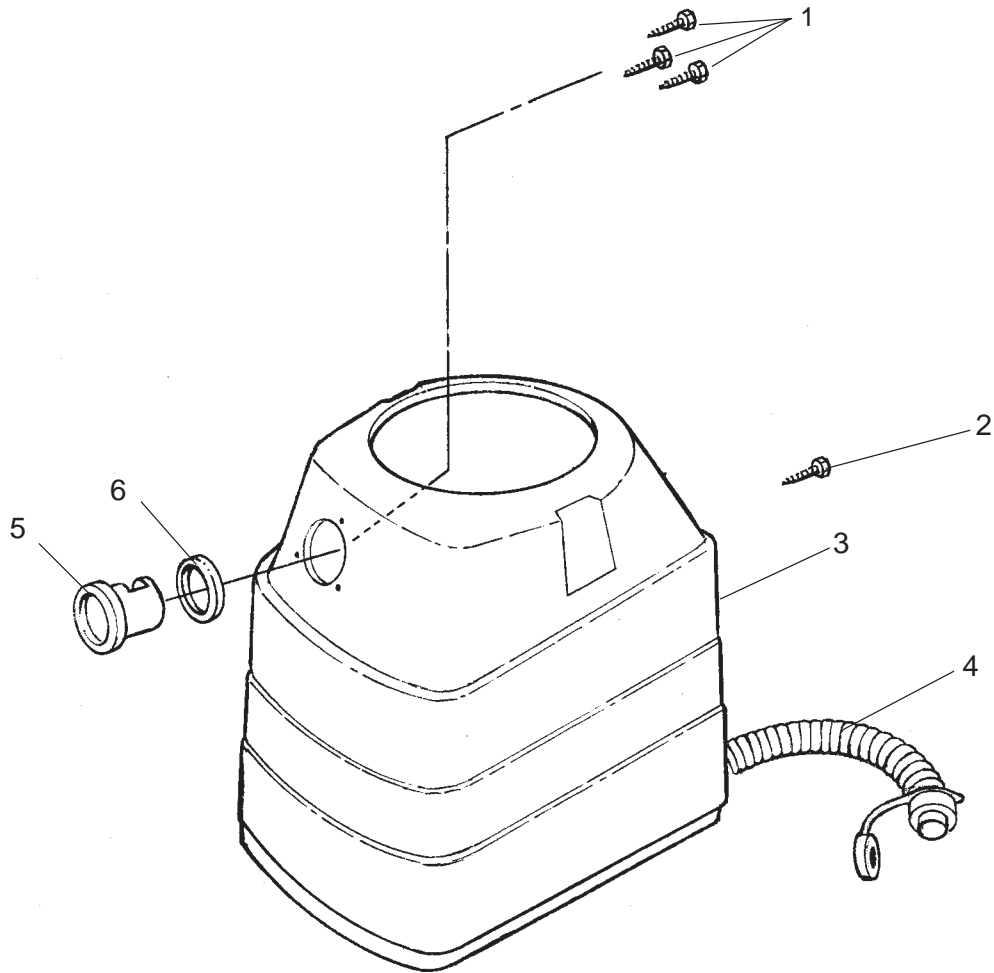


Clarke®
CTV 7
Assembly Parts List 10/03

			02172A	02170A
Ref.	Part No.	Description	QTY	QTY
1	11754000	Filter Element, P.P.	1	1
2	60606000	Float	1	1
3	60607000	Cage, Float`	1	1
4	61156103	Filter, Cloth	1	1
5	60910	Filter Bag, (pkg. of 5)`	1	1
6	2364	Cap Nut	4	4
7	2793	U-Disc 8.4 mm Zinc	4	4
8	90000136	Tank	1	1
9	61276	Washer	4	4
10	60608	Caster, PVC	4	4
11	NA	Screw, M 5 x 20, Phillips Self Threading	5	5
12	60605000	Bottom Housing, Single Stage	-	1
	60605010	Bottom Housing, Two Stage	1	-
13	60610	Motor Ring, Vac	2	2
14	70002112	Vac Motor, 120V Single Stage	-	1
	70003311	Vac Motor, 120V Two Stage	1	-
15	60611	Foam	1	1
16	62171	Automatic Start	1	-
17	46248	Screw, PT 3.5 x 16	4	-
18	46297	Plug Cover	1	-
19	49267	Plug Socket	1	-
20	60867	Switch	-	1
	11992	Switch Complete	1	-
21	NA	Screw, M3.5 x .6 x 14 Shoulder, Hex	3	3
22	60603	Handle	1	1
23	60601000	Top Cover	1	1
24	26797	Clamp	2	2
25	26771800	Power Cord	1	1
26	60604000	Upper Housing	1	1
27	70000316	Brush Carbon (Set)	1	1
28	30000601	Inlet	1	1
29	30000602	Inlet, Seal	1	1

NA = Not Available

Clarke®
CTV 15 & 20
Tank Assembly Drawing and Parts List 3/05

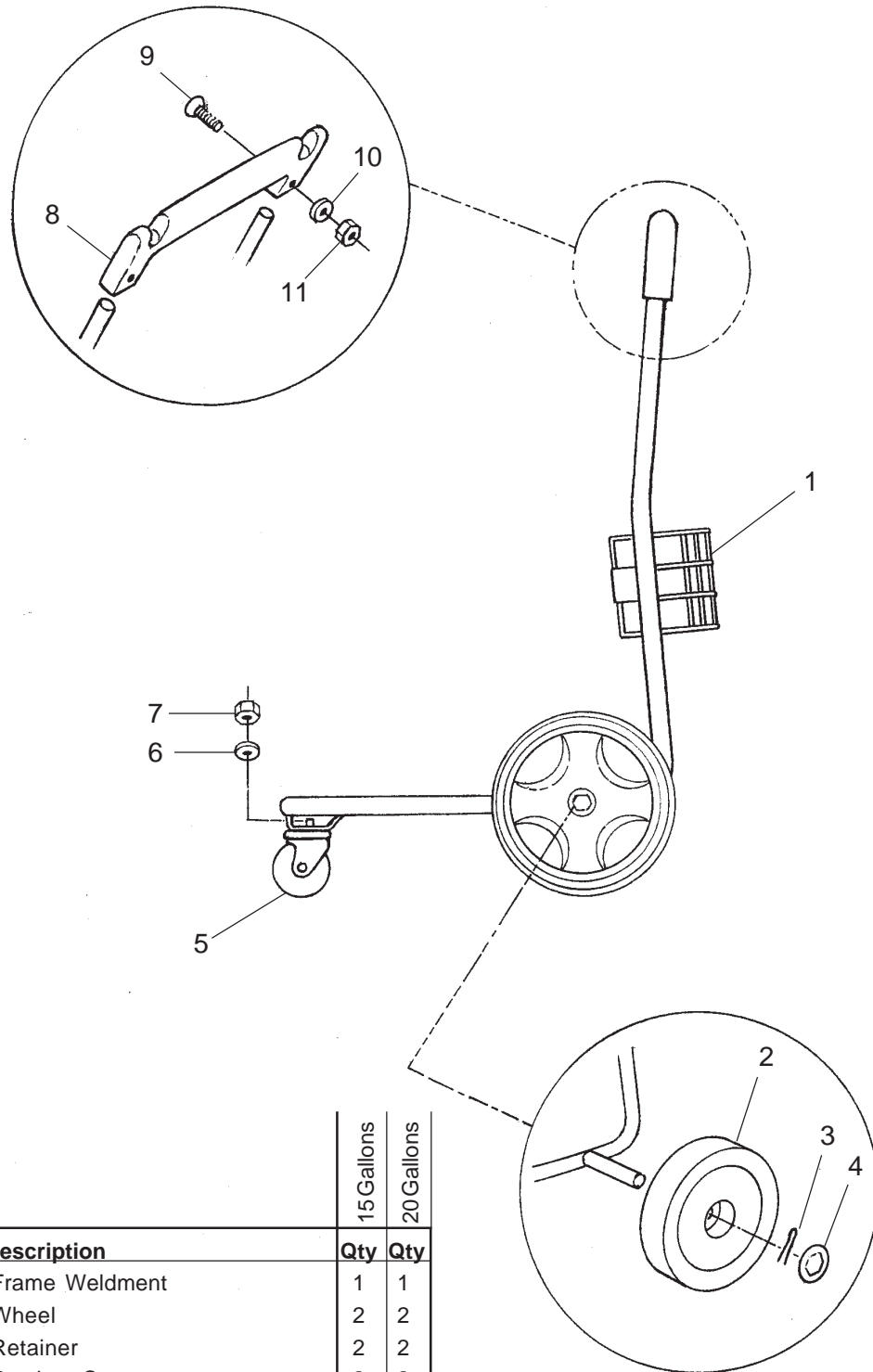


Ref.	Part No.	Description	15 Gallon	20 Gallon
			Qty	Qty.
1	50170	Screw, 3.5 x 14	3	3
2◆	NA	Screw, M8 x 12	2	2
3◆	53840A	Tank, 20 Gallons	-	1
◆	53841A	Tank, 15 Gallons	1	-
4	30001507	Hose, Drain Assembly	1	1
5	30000601	Inlet	1	1
6	30000602	Inlet Seal	1	1

NA = Not Available

NOTE: ◆ indicates a change has been made since the last publication of this manual.

Clarke®
CTV 15 & 20
Frame Assembly Drawing and Parts List 3/05

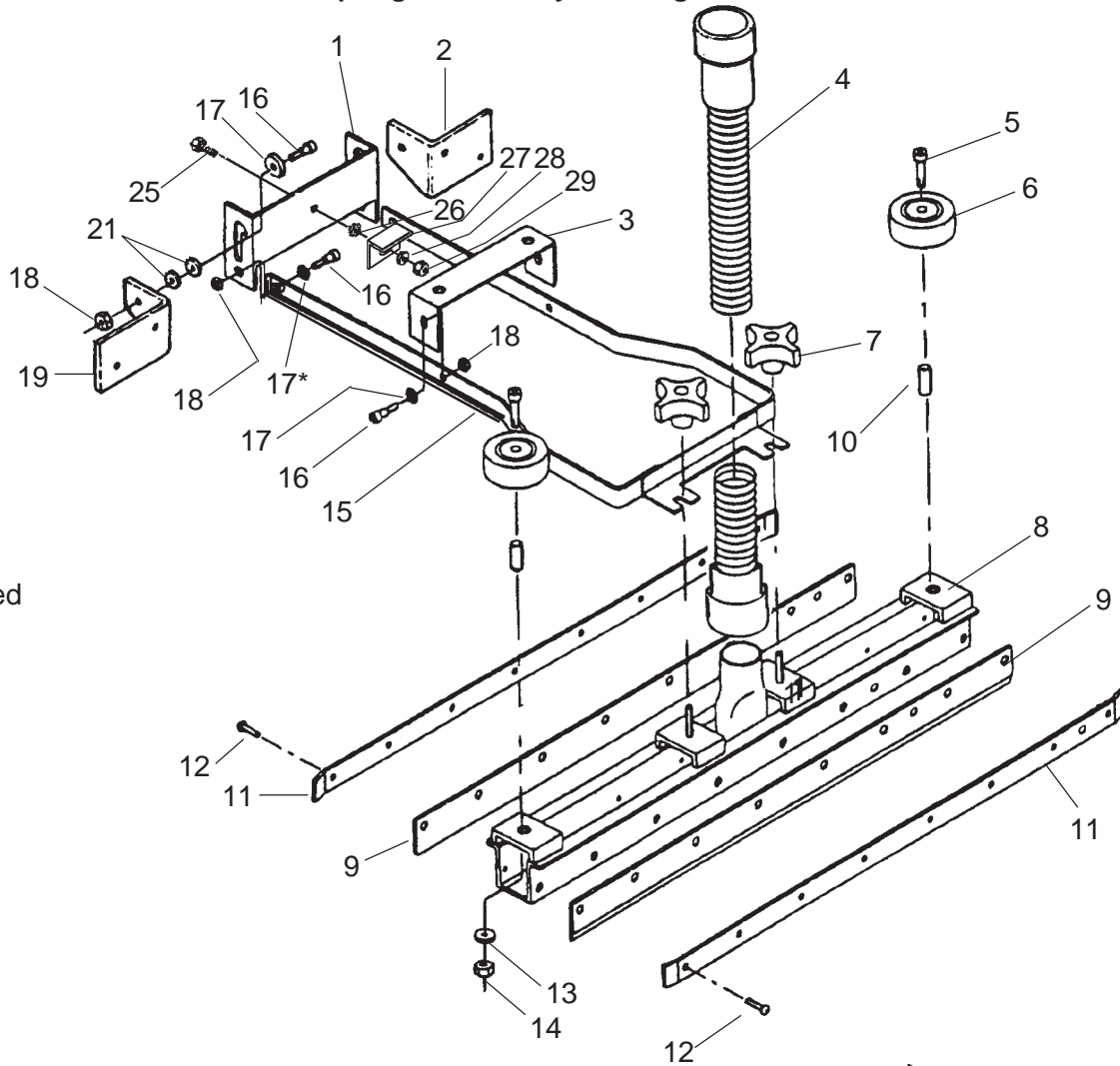


Ref.	Part No.	Description	15 Gallons	20 Gallons
			Qty	Qty
1 ♦	53843A	Frame Weldment	1	1
2	70020032	Wheel	2	2
3	21532060	Retainer	2	2
4	70000145	Retainer, Cover	2	2
5	60608100	Caster	1	1
6	NA	Washer, M8.4 x 17 x 1.5	1	1
7	NA	Nut, M8 Hex	1	1
8	43625	Handle Bar SQ.	1	1
9	NA	Screw, M6 x 40 Self Threading	2	2
10	NA	Washer, M6.4 x 12.5 x 1.5	2	2
11	NA	Nut, M6 Lock	2	2

NA = Not Available

NOTE: ♦ indicates a change has been made since the last publication of this manual.

Clarke®
CTV 7, 15 & 20
Squeegee Assembly Drawing 9/04



*As needed

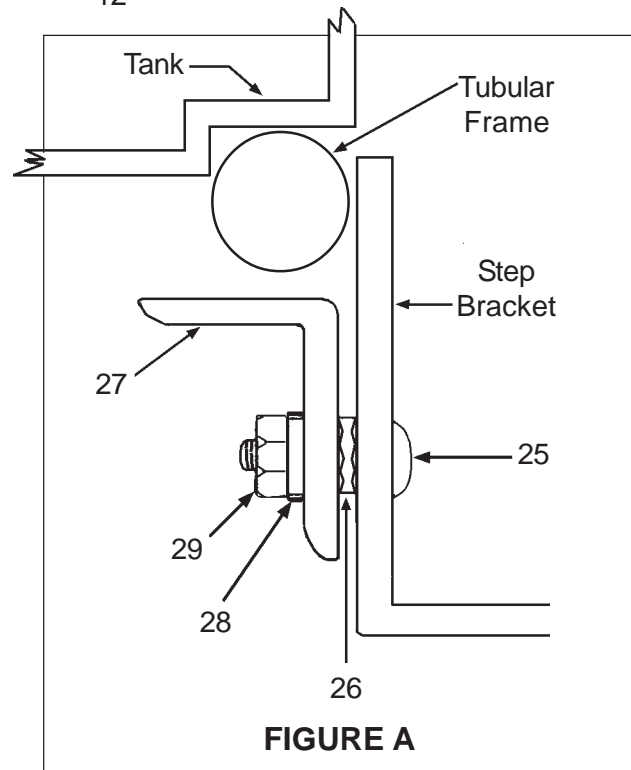
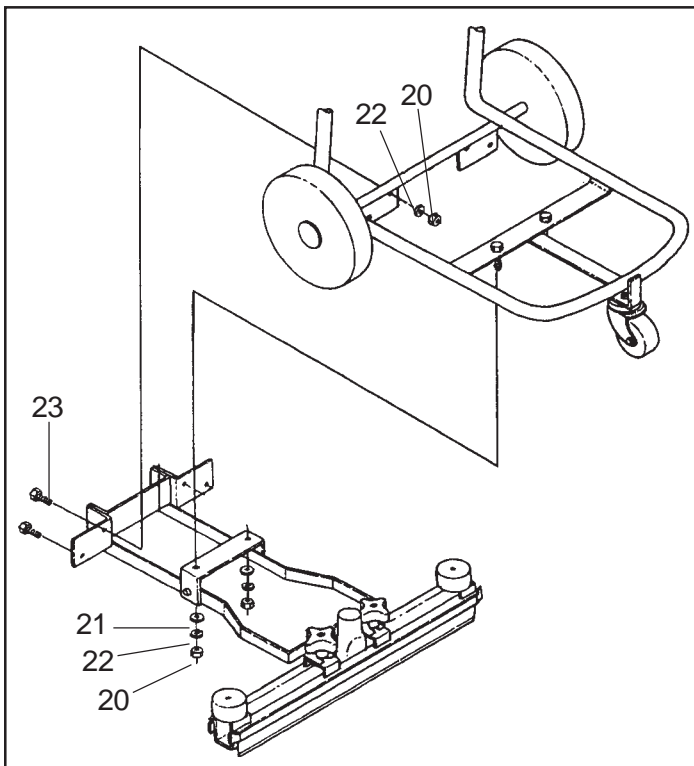


FIGURE A

Clarke®
CTV 7, 15 & 20
Squeegee Assembly (70007035) Parts List 9/04

Ref.	Part No.	Description	Qty
1	27000405	Pedal, Squeegee Lift	1
2	27000404	Support, Pedal Left	1
3	27000406	Support, Lift	1
4	30001508	Hose, Squeegee	1
5	NA	Screw, M6 x 1 x 40 Shoulder Hex	2
6	27000414	Wheel	2
7	21448070	Knob	2
8	27000410	Frame, Squeegee Weldment	1
9	30292A	Blade, Squeegee	2
10	27000415	Bushing, Wheel	2
11	27000411	Retainer, Squeegee Blade	2
12	NA	Screw, M5 x 0.8 x 10 Phillips	18
13	NA	Washer, M6.4 x 12.5 x 1.5	2
14	NA	Nut, Lock M6 Lock	2
15	27000407	Lift, Squeegee Weldment	1
16	NA	Bolt, Shoulder 1/2" x 1.25mm x 22mm	6
17	NA	Washer, M10.5 x 21x 1.5	6
18	NA	Nut, Lock M8	6
19	27000403	Support, Pedal Right	1
20	NA	Nut, M8 Hex	6
21	NA	Washer, M8.4 x 17 x 1.5	6
22	NA	Washer, Lock M8	6
23	NA	Screw, Hex M8 x 1.25 x 16	6
24	70007035	Squeegee Assembly (Includes all above)	1
25	80197A	Screw, M8 Hex Head	1
26	NA	Washer, M8 Star	1
27	61694A	Bracket	1
28	NA	Washer, M8 Flat	1
29	80198A	Nut, M8 Lock	1

NA = Not available.

For Squeegee Assembly Installation, Follow this Procedure:

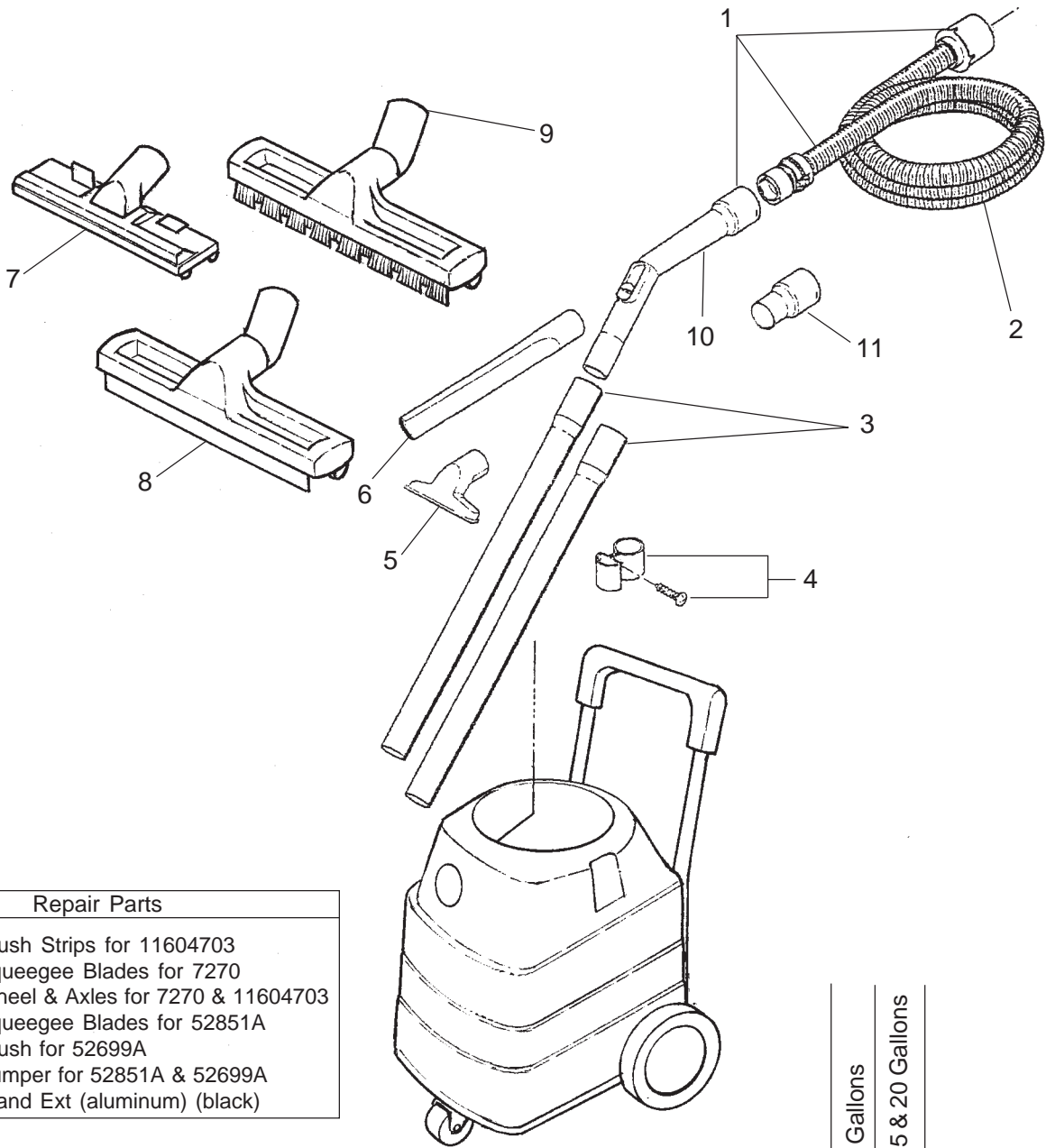
1. Remove head assembly from tank.
2. Turn the handle and tank upside down.
3. Assemble the squeegee and lift frame per parts illustration (see page 36).
4. Install the squeegee lift frame to the tank frame.
5. Turn the handle and tank over to the upright position with the wheels on the floor.
6. Attach the squeegee to the lift frame and tighten the clamping knobs.
7. Attach the straight hose cuff to the squeegee.
8. Replace the head assembly on the tank.
9. Attach other end of the hose to the tank inlet.
10. Adjust the squeegee.
 - a.) Place the squeegee in the down position.
 - b.) Place the wrench on the nut (#29) and another wrench on the head of the screw (#25).
 - c.) While rolling the machine slightly forward, so the squeegee blade lays over slightly (flares), tighten the nut (#29).

NOTE: The "L" bracket (#27) is in proper position when the squeegee assembly no longer "plows" into the floor on the forward push, but still picks up properly on the rear ward pull. Additional adjustments may be required to obtain the optimum "L" bracket position.

For Squeegee Operation, Follow this Procedure:

1. To raise squeegee, push down on pedal.
2. To lower squeegee, push forward on pedal. The squeegee will operate both forward and backwards.

Clarke®
CTV 7, 15 & 20
Accessory Tools Drawing and Parts List 4/03



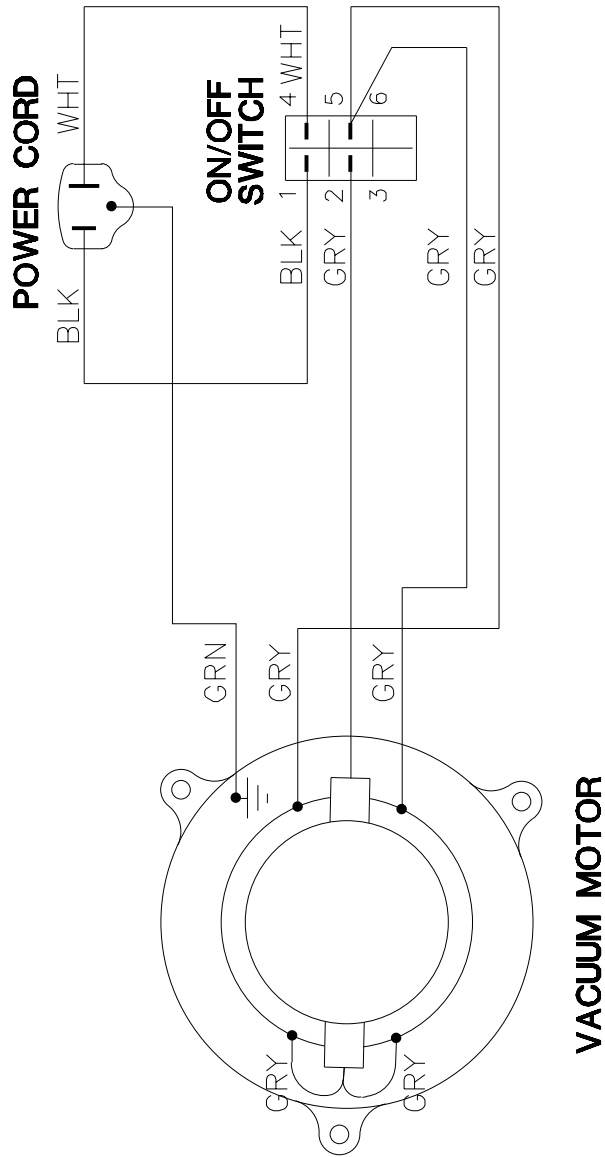
Repair Parts	
70000219	Brush Strips for 11604703
70000220	Squeegee Blades for 7270
70000221	Wheel & Axles for 7270 & 11604703
30340A	Squeegee Blades for 52851A
30341A	Brush for 52699A
30342A	Bumper for 52851A & 52699A
54490	Wand Ext (aluminum) (black)

Optional Deluxe 20" Tool Kit - 10484A		
52699A	Tool, Floor	1
52851A	Tool, Squeegee	1
52852A	Wand-2 Pc., Button Lock	1

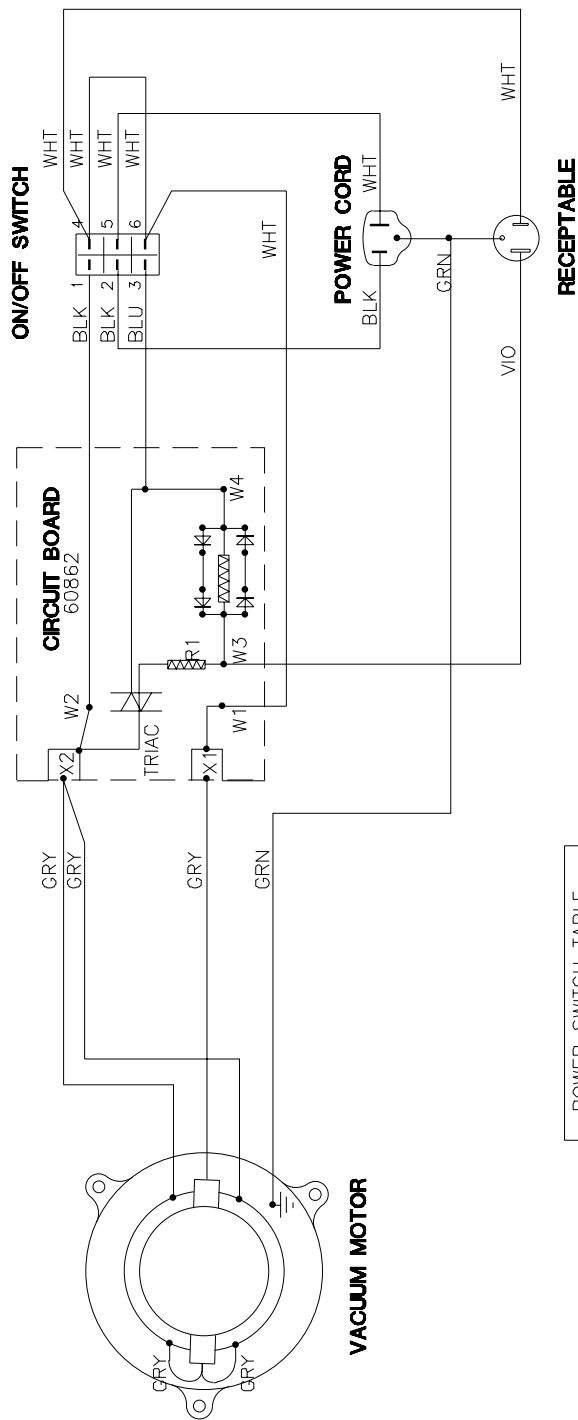
Ref.	Part No.	Description	Qty	Qty.
1	30001506	Hose Assembly	-	1
	90000502	Hose Assembly	1	-
2	30001505	Hose, Vac (4 meter)	-	1
	30001504	Hose, Vac (2 meter)	1	-
3	40696	Wand Extension (1 piece)	2	-
	27000437	Wand Ext (aluminum) (clear)	-	2
4	60609	Wand Holder	1	1
5	14295	Universal Nozzle	1	1
6	6084	Crevice Tool	1	1
7	30000003	Multi-Purpose Nozzle	1	1
8	7270	Floor Nozzle (water)	1	1
9	11604703	Floor Nozzle (dry)	1	1
10	60911	Curved Wand	1	1
11	70007039	Adapter, Hose to 1/2" Wand	1	1

7 Gallons
15 & 20 Gallons

Clarke®
CTV 7, 15 & 20
Accessory Tools Drawing and Parts List 8/02



Clarke®
CTV 7-AS
Electrical Schematic 8/02



POWER SWITCH TABLE	
POS.	CONT.
II	2-3 5-6
O	NONE
I	2-1 5-4