

---

**IVIE Enterprises**

[www.ivie-ent.com](http://www.ivie-ent.com)

Ph:(918)254-5161 or (888)262-5161 Fax:(918)250-4807



**DTV-7**

**Section II**  
**Parts and Service Manual**

(Form. No. 78421B)

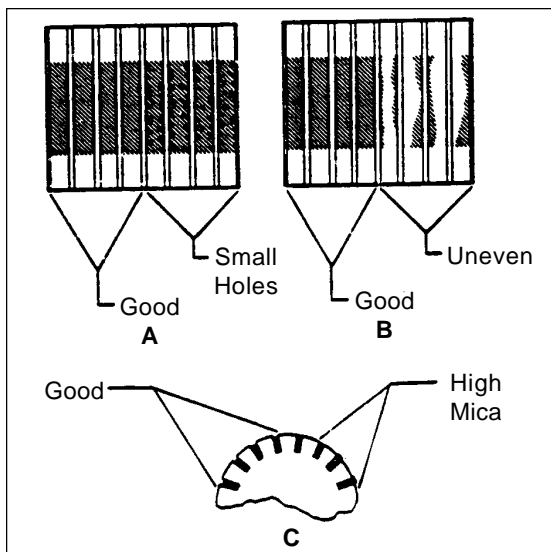


Figure 1

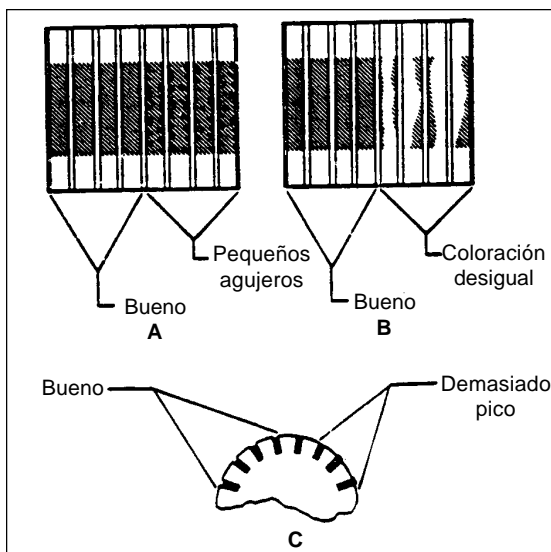


Figure 2

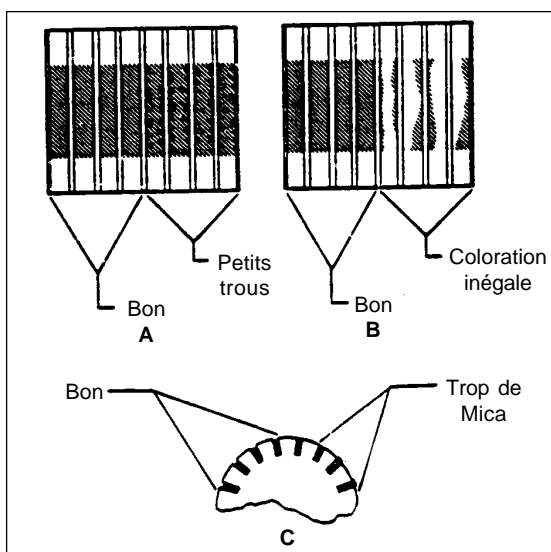


Figure 3

## MAINTENANCE

This section describes the procedure that must be done by a person authorized to do maintenance.

**WARNING:** To prevent electrical shock, always remove the electrical plug from the electrical outlet before doing any repairs or maintenance to this machine.

Keep the machine clean. It will have longer life and need fewer repairs.

### Maintenance of the Motor

The motor that has a commutator and carbon brushes must be checked every six months or 600 hours of operation.

**WARNING:** Electrical inspections must be made by a person authorized to do maintenance. Electrical repairs must be made by a person authorized to make electrical repairs.

### How to Check the Commutator and Carbon Brushes

To check the commutator and the carbon brushes, follow this procedure:

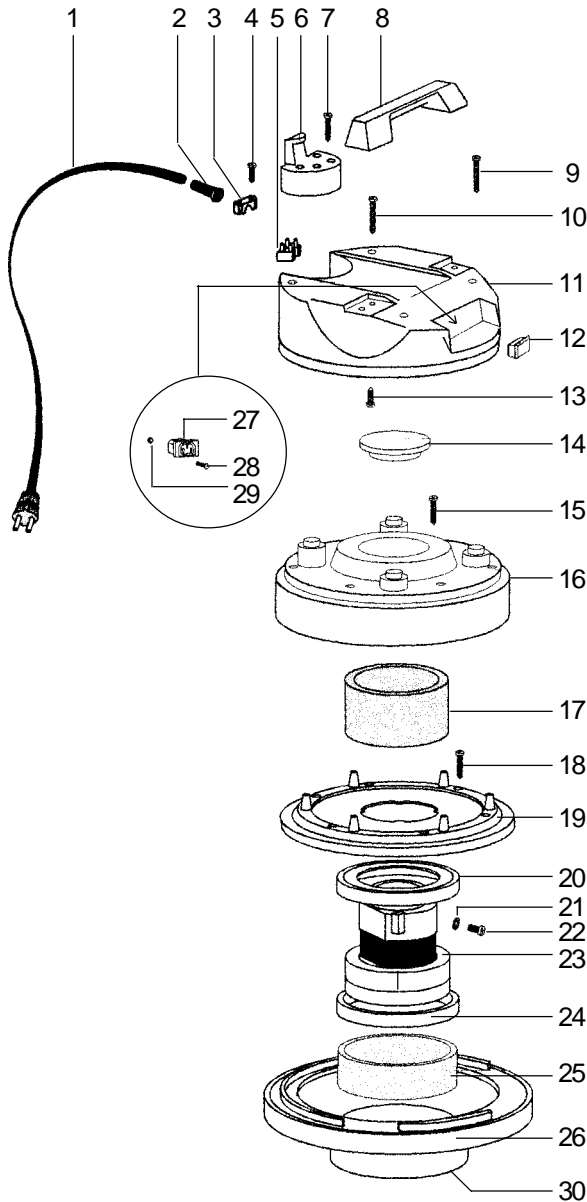
1. Remove the screw that holds the motor cover.
2. Disconnect the wires.
3. Push the motor through the bottom of the plate.
4. Inspect the commutator. Take the machine to a Clarke authorized repair location if you see any of the following conditions:
  - a. Small holes in the surface of the commutator. See figure 1A.
  - b. Uneven color. Look for an even dark brown color. Clean areas indicate a problem. See figure 1B.
  - c. High mica. The mica insulation must be lower than the commutator bars. See figure 1C.
5. Remove the carbon brush assemblies and check the carbon brushes. Replace both carbon brush assemblies if either of the carbon brushes is shorter than ½ inch (13mm), order two new brushes and replace both carbon brushes earlier than the normal inspection time.
6. Install the motor cover, and the fasteners.

**WARNING:** The machine must be tested for electrical safety after electrical repairs are made.

**NOTE:** For best operation, have the machine checked by a Clarke authorized repair person every 12 months.

For safe operation and longer life of your product, use Clarke parts.

**CLARKE TECHNOLOGY DTV-7  
Head Assembly Drawing & Parts List 12/98**



Ref.	Part No.	Description	Qty
1	51841A	Power Cord	1
2	56448A	Strain Relief	1
3	54503A	Grip, Cord	1
4	56441A	Screw 5mm x 20mm	2
5	50522A	Block Terminal	1
6	51842A	Hook, Cord	1
7	56481A	Screw, 5mm x 30mm	4
8	54914A	Handle, Lift	1
9	56482A	Screw, 5mm x 35 mm	2
10	56482A	Screw, 5mm x 35 mm	2
11	52957A	Cover, Dome	1
12	47316B	Switch, Rocker	1
13	56441A	Screw, 5mm x 20mm	4
14	57162A	Plug, Upper	1
15	56482A	Screw, 5mm x 35mm	6
16	51844A	Cover, Motor	1
17	54063A	Filter, Motor	1
18	56483A	Screw, 5mm x 40mm	6
19	56484A	Support, Motor	1
20	54340A	Gasket, Head Assembly	1
21	59859A	Washer, Star	1
22	56485A	Screw, 4mm x 8mm	1
23	56035B	Motor, Vac 115V	1
	56047B	Motor, Vac 230V	1
	40834A	Brush, Carbon 115V	1
	40835A	Brush, Carbon 230V	1
24	54377A	Gasket, Vac Motor	1
25	53984A	Filter, Motor Base	1
26	50521A	Base, Motor	1
27	57377A	Receptacle, Accessory	1
28	964006	Screw, 3mm x 16 mm	2
29	924007	Nut, 3mm	2
30 <sub>u</sub>	54340A	Gasket, Head	1
NI	59887A	Wire, Connect	4
NI	52944A	Clip	3

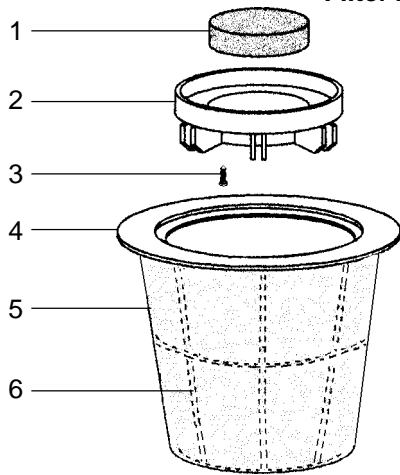
NI = Not illustrated

NOTE: <sub>u</sub> indicates a change has been made since last publication of this manual.

**IVIE Enterprises**

[www.ivie-ent.com](http://www.ivie-ent.com) Ph:(918)254-5161 or (888)262-5161 Fax:(918)250-4807

**CLARKE TECHNOLOGY DTV-7  
Filter Bag Assembly Drawing & Parts List 12/97**

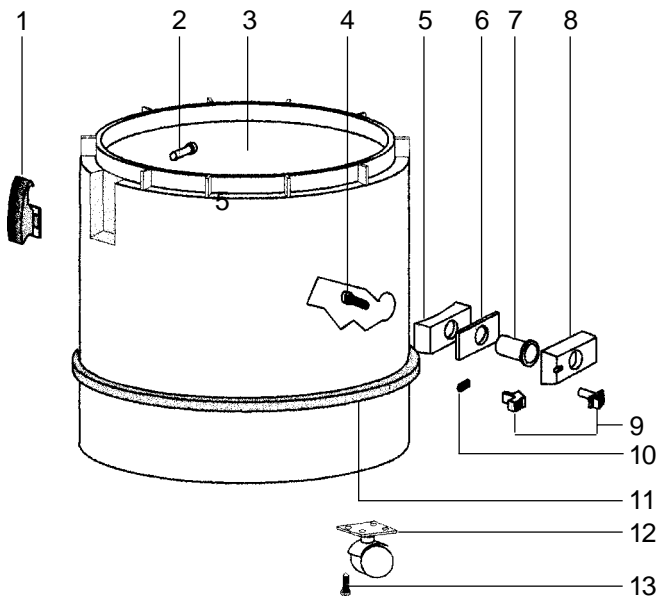


Ref.	Part No.	Description	Qty
1	53970A	Filter, Intake	1
2	51822A	Cage, Float	1
3	56482A	Screw, 5mm x 35mm	4
4	57842A	Ring, Support Filter Base	1
5	50763A	Bag, Filter	1
6	58417A	Support, Bag	1

To add optional HEPA Filter for DTV-7 order:

54016A	HEPA Filter	1	58541A	Spacer, Plastic	4
51884A	Float Cage	1	58411A	Screw, 5 x 25	4
57372A	Retainer	1	34294A	Gasket, Cage	1

**Tank Assembly Drawing & Parts List**



Ref.	Part No.	Description	Qty
1	51823A	Clamp, Tank	2
2	57376A	Rivet	4
3	58921A	Tank, Poly 7 Gallon	1
4	56481A	Screw, 5mm x 35mm	4
5	57375A	Retainer, Poly Tank	1
6	54376A	Gasket, Tank	1
7	53133A	Deflector, Tank	1
8	50336A	Adaptor, Hose	1
9	50524A	Button, Push	1
10	58692A	Spring, Pushbutton	1
11	50526A	Bumper, Tank	1
12	52128A	Caster, Swivel	4
13	56489A	Screw, 4mm x 15mm	16

**DTV-7 Dry Vac Tools**

Part. No.	Description
39710A	Wand, Curved
39709A	Wand, Chrome
35183A	Hose, Flexible
39207A	Tool, Carpet/Floor
39206A	Tool, Crevice
39205A	Tool, Dusting
39204A	Tool, Upholstery