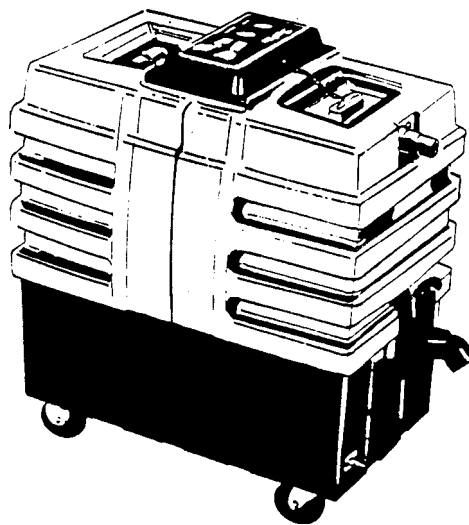




## Service Manual



## EXT 10-15 Extractor

### **READ THIS BOOK**

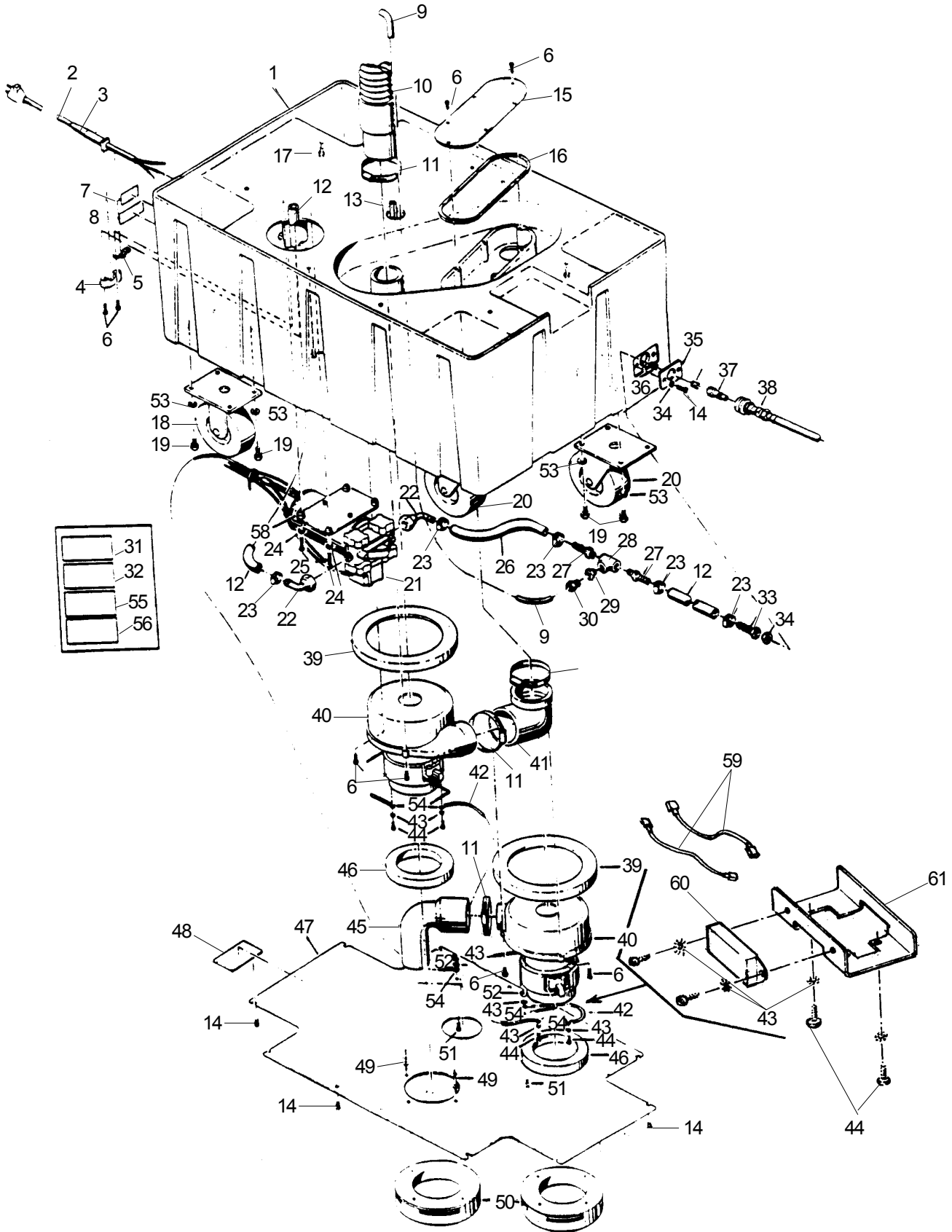
This book has important information for the use and safe operation of this machine. Failure to read this book prior to operating or attempting any service or maintenance procedure to your ALTO machine could result in injury to you or to other personnel; damage to the machine or to other property could occur as well. You must have training in the operation of this machine before using it. If your operator(s) cannot read English, have this manual explained fully before attempting to operate this machine.

Si Ud. o sus operadores no pueden leer el Inglés, se hagan explicar este manual completamente antes de tratar el manejo o servicio de esta máquina.

All directions given in this book are as seen from the operator's position at the rear of the machine.

For new books write to: ALTO U.S. Inc., 2100 Highway 265, Springdale, Arkansas 72764.

**CLARKE TECHNOLOGY EXT-10, 15  
Main Frame Assembly Drawing 11/98**



**IVIE Enterprises**

[www.ivie-ent.com](http://www.ivie-ent.com) Ph:(918)254-5161 or (888)262-5161 Fax:(918)250-4807

**CLARKE TECHNOLOGY EXT-10, 15**  
**Main Frame Assembly Parts List**  
**11/98**

Item #	Part No.	Description	Qty.
1	34003B	Main Frame EXT-10/15	1
2	42214A	Cord, Power 120 Volt	1
	42231A	Cord, Power 230 Volt	1
3	38002A	Strain, Relief	1
4	672011	Clamp, Strain Relief	1
5	672012	Clamp, cord	1
6	85522A	Screw, 10-16 x 1 Pan Hd	19
7	215103	Label, Caution	1
8	215104	Label, Warning	1
9	35114B	Hose, Pressure Gauge	1
10	35115A	Hose, Vacuum	1
11	672013	Clamp, Hose	4
12	35147A	Hose, Intake	4
13	49612A	Harness Assembly	Ref
14	962957	Screw, 10-16 x 1/2 PN*ST	16
15	62604A	Cover, Upper Chamber	1
16	34217A	Gasket, Upper Chamber	1
17	962983	Screw, 1/4-20 x 5/8 Pn	8
18	692473	Caster, Rear	2
19	962901	Screw, 9/32 -16 x 3/4 Hx	16
20	692472	Caster, Front, Swivel	2
21	45905C	Pump, 115 Volt	1
	45929A	Pump, 230 Volt	1
22	692870	Elbow, Swivel 3/8 Hose Barb	2
23◆	50248A	Clamp, Hose	5
24	980982	Washer, #10 Plain	10
25	962970	Screw 10-6 x 1 1/4 Pn Hi-Lo	4
26	69404A	Hose, Discharge	1
27	170030	Coupling, 1/4 MPT x 1/8 MPT	1
28	729221	Tee, 1/4 FPT	1
29	851144	Bushing, 1/4 MPT x 1/8 FPT	1
30	52401A	Connector, 1/4 Tube x 1/8 FPT	1
31	215104	Label, Fire Warning	1
32	73275A	Label, Warning, Rain	1
33	50300A	Adapter, 1/8 FPT to 3/8 H	1
34	980645	Washer	3

Item #	Part No.	Description	Qty.
35	66617A	Plate, Q.D. Mounting	1
36	725729	Nipple, 1/8 Hex	1
37	737140	Quick Disconnect	1
38	15631A	Hose, Assembly, Applicator	Ref
39◆	643418	Gasket, Vacuum Motor	2
40◆	44906A	Motor, Vacuum 120 Volt	2
	44907A	Motor, Vacuum 230 Volt	2
41	674112	Hose, Exhaust	1
42	954010	Wire, Assembly, Ground	2
43◆	980603	Washer, #10 Shakeproof	8
44◆	962987	Screw 10-24 x 1/2 Pn St.	6
45	620281	Adapter, Accessory	1
46	693473	Gasket, Vac Motor, Bottom	2
47	62605A	Cover, Frame Bottom	1
48		Serial Plate	1
49	930093	Rivet, 1/8 Dia., Pop	8
50	30602A	Baffle Assembly, Air Intake	2
51	962109	Screw, 10-24 x 5/8 Pn SS	2
52	920200	Nut, 10-24 Hex	2
53	980651	Washer 5/16 Plain	16
54	911933	Terminal	1
55	73276A	Label, Spanish	1
56	73277A	Label, Water	1
NI	911177	Nut, Wire (Not Shown)	4
NI	899254	Tie, Wire (Not shown)	1
58	66653A	Plate, Pump, Adapter	1
59◆	49310A	Lead Asm. (CE Machine only)	2
60◆	47201A	Filter Asm. (CE Machine only)	1
61◆	69894A	Bracket (CE Machine only)	1
NI	962009	Screw	4
NI	81901A	Nut, Keps #10-24	4
NI	47802A	Terminal, Ring	1
NI	47701A	Terminal, 1/4 FIFQDC	2
NI	42910A	Fuse	1
NI	43004A	Fuse Holder	1

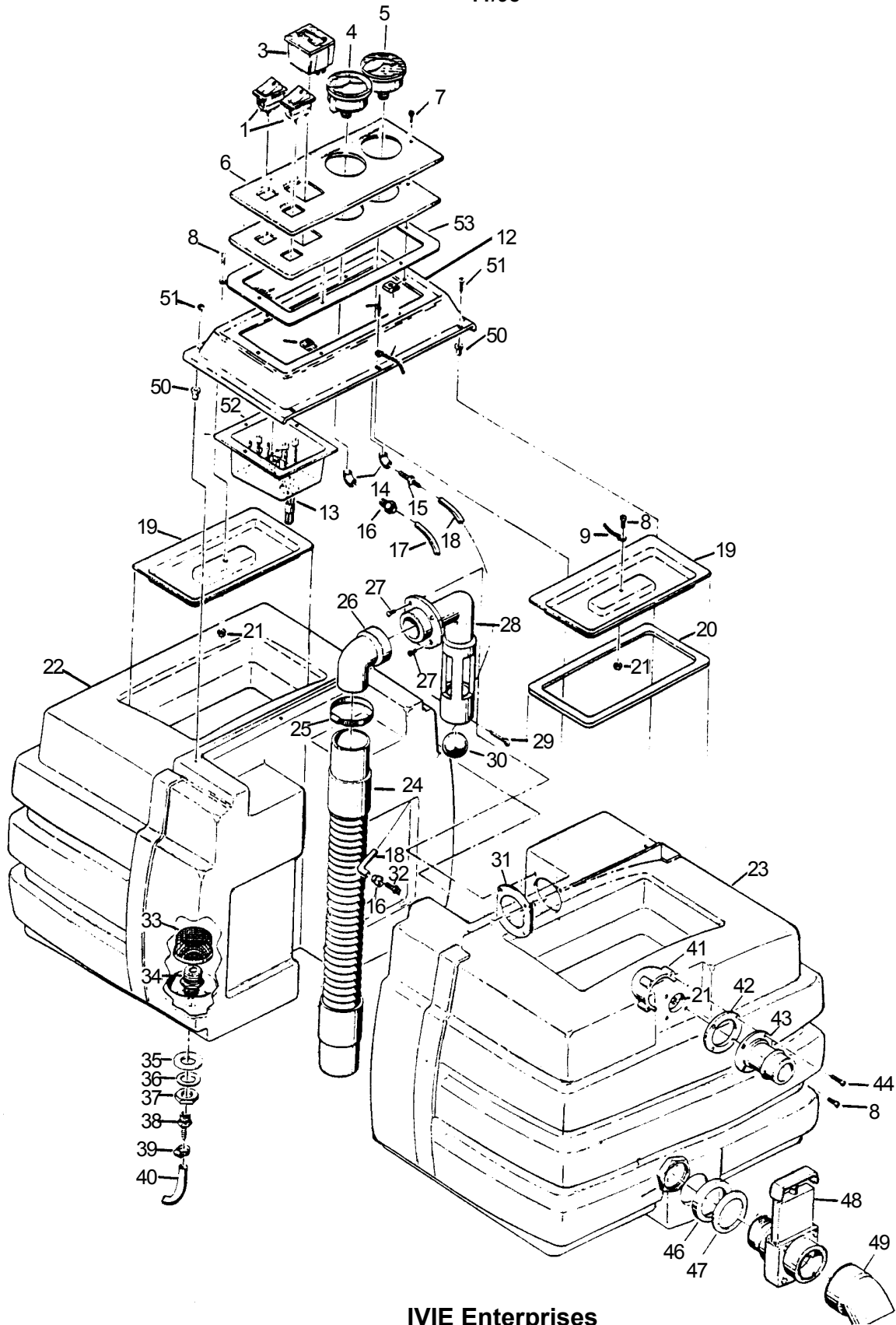
NI = Not illustrated

**NOTE:** ◆ indicates a change has taken place since last publication of this manual.

**IVIE Enterprises**

[www.ivie-ent.com](http://www.ivie-ent.com) Ph:(918)254-5161 or (888)262-5161 Fax:(918)250-4807

CLARKE TECHNOLOGY EXT-10, 15  
 Tank Assembly Drawing  
 11/98



**IVIE Enterprises**

[www.ivie-ent.com](http://www.ivie-ent.com)

Ph:(918)254-5161 or (888)262-5161 Fax:(918)250-4807

**CLARKE TECHNOLOGY EXT-10, 15**  
**Tank Assembly Parts List**  
**11/98**

Item #	Part No.	Description	Qty.
1	47316B	Switch - On/Off	2
2			
3	44400B	Meter, Hour 120V	1
	44401B	Meter, Hour 230V	1
4	54204B	Gauge, Pressure	1
5	54205B	Gauge, Vac	1
6	37304C	Plate, Switch & Gauge, EXT10/15	1
7	85811A	Screw, 10-24 x 3/4 Pn St Blk	6
8	962109	Screw 10-24 x 5/8 Pn Hd SS	3
9	692409	Chain, Cover	2
10	83003A	Rivet, 1/8 Dia. Pop	2
11	920068	Nut, 10-24 Tinnerman	6
12	32317B	Cover, Tank, EXT-10/15	1
13	49612B	Harness Assembly	1
14	742880	Elbow, 1/8 Pipe Thread	2
15	693303	Fitting, 1/8 Hose x 1/8 Pipe	1
16	52401A	Connector, 1/4 Tube x 1/8 MPT	1
17	35114B	Hose, Pressure Gauge	Ref
18	694104	Hose, Vac Gauge	1
19	832322	Cover, Solution Tank	2
20	34218A	Gasket, Tank Cover	1
21	920296	Nut, 10-24 Elastic-Stop	3
22	◆ 38919C	Tank, Solution EXT-10	1
	◆ 38920C	Tank, Solution EXT-15	1
23	◆ 38916C	Tank, Recovery EXT-10	1
	◆ 38917C	Tank, Recovery EXT-15	1
24	35115A	Hose, Vac Tank to Base	Ref
25	672013	Clamp, 2 3/4"	1

Item #	Part No.	Description	Qty.
26	692802	Elbow, 90 Street	1
27	962350	Screw, 10-32 x 1/2	4
28	39303A	Tube, float Shut-Off	1
29	925596	Pin, Cotter 1/8 x 2"	1
30	691304	Ball-Float Shut-Off	1
31	34219A	Gasket, Float Tube	1
32	690208	Adapter, Minature Hose	1
33	728535	Strainer, solution Tank	1
34	60306A	Adapter, Filter	1
35	833401	Gasket, Drain	1
36	980630	Washer, 3/4 ID, Plain	1
37	920264	Nut, 3/4-16 x 3/8 Hx Jam	1
38	170030	Coupling, 1/4 P x 5/8 H	1
39	◆ 50248A	Clamp, Hose	1
40	35147A	Hose, Intake	Ref
41	692701	Deflector	1
42	693406	Gasket, Swivel Coupling	1
43	690212	Adapter, Vac Hose	1
44	85522A	Screw, 10-16 x 1 Pan Hd	3
45	920797	Nut, Drain Valve	1
46	733442	Gasket, Drain Valve	1
47	980422	Washer, Drain Valve	1
48	59721A	Valve, Drain	1
49	53606A	Elbow, 2" x 45° St	1
50	81800A	Well Nut	4
51	962113	Screw, 10-32 x 1 Pn Hd	4
52	33300A	Enclosure, Bottom	1
53	34238A	Gasket, Plate	1
NI	962983	Screw, 1/4-20 x 5/8	8

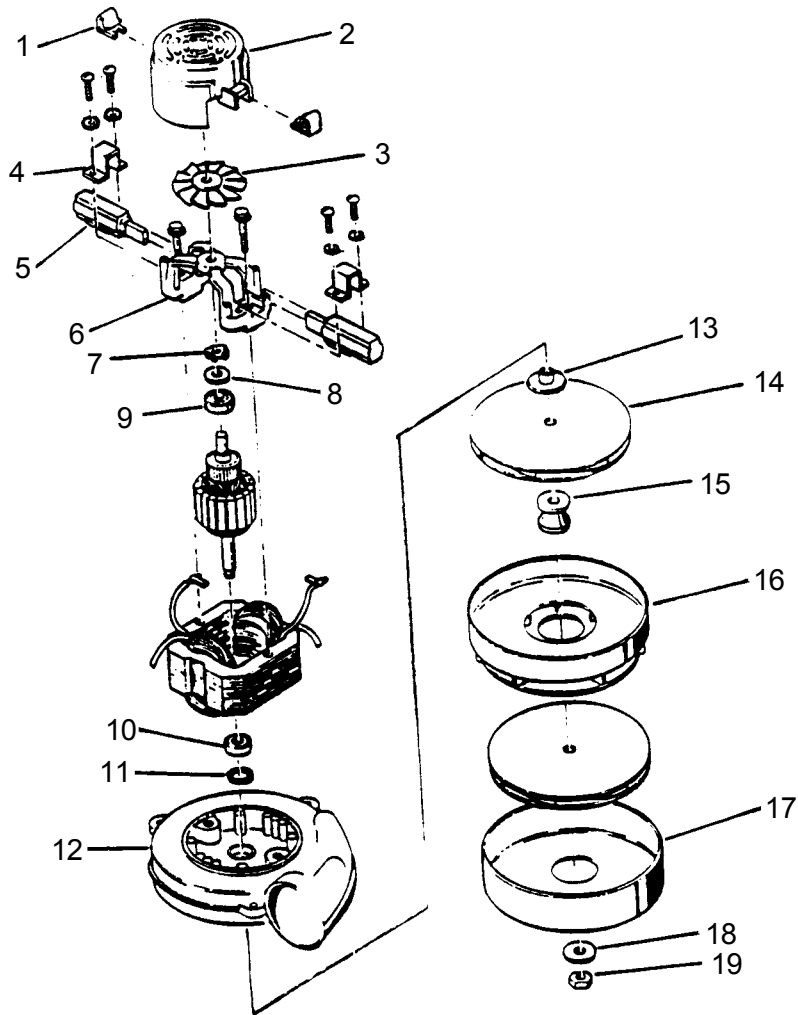
**NOTE:**

◆ indicates a change has been made since last publication of this manual since

**IVIE Enterprises**

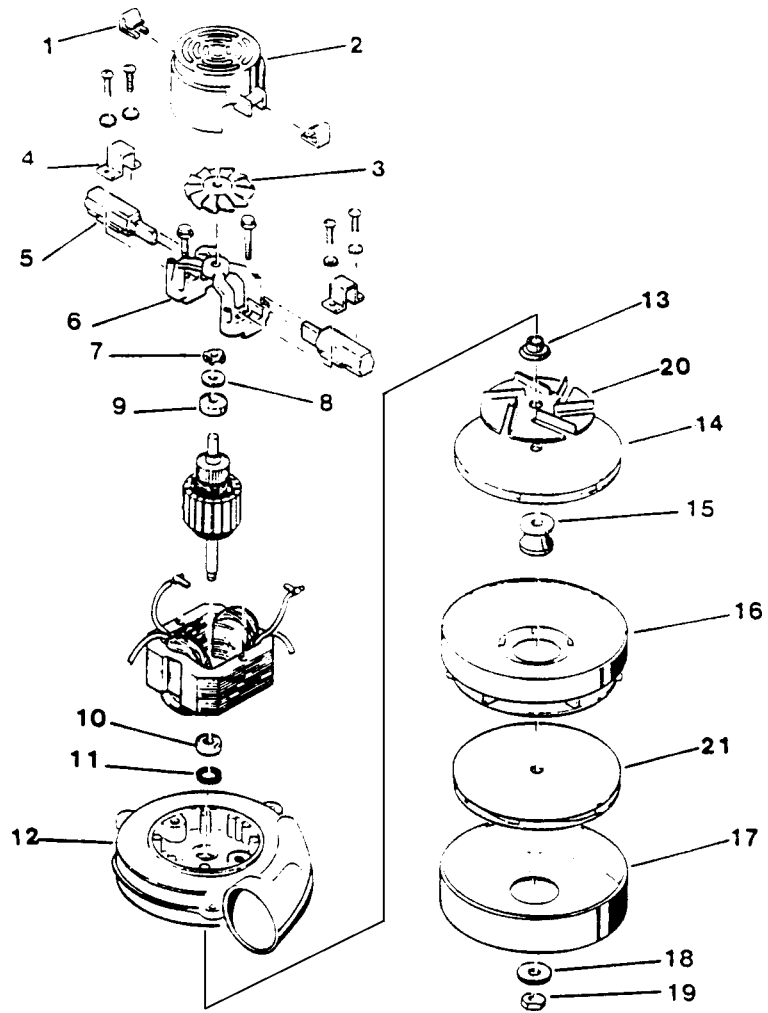
[www.ivie-ent.com](http://www.ivie-ent.com) Ph:(918)254-5161 or (888)262-5161 Fax:(918)250-4807

**CLARKE TECHNOLOGY EXT-10, 15**  
**Motor 120V (44906A) Drawing & Parts List**  
 11/96



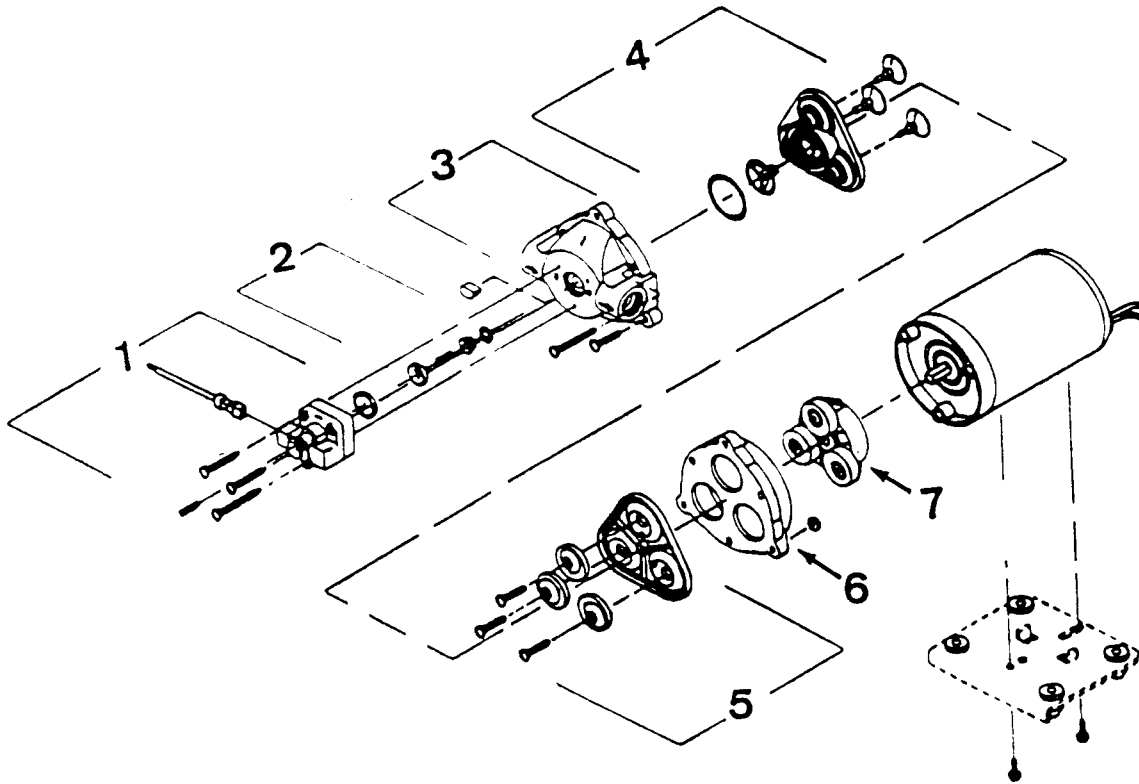
Item #	Part No.	Description	Qty.
1	51913A	Clip (Optional)	2
2	54809A	Housing, Vent	1
3	53905A	Fan	1
4	51914A	Clamp	2
5	51401A	Carbon Brushes	2
6	50618A	Commutator End Bracket	1
7	638313	Load Spring	1
8	53100A	Disc	1
9	902679	Ball Bearing	1
10	902648	Ball Bearing	1
11	59803A	Neoprene Washer	1
12	50610A	Fan End Bracket	1
13	58501A	Spacer	1
14	53914A	Vacuum Fan	2
15	658201	Spacer	1
16	53908A	Stationary Fan	1
17	57904A	Fan Shell	1
18	980205	Washer	1
19	920329	Nut	1

**CLARKE TECHNOLOGY EXT-10, 15**  
**Motor 230V-#44907A 11/96**



Ref #	Part No.	Description	Qty
1	51913A	Clip (Optional)	2
2	54809A	Housing, Vent	1
3	53905A	Fan	1
4	51914A	Clamp	2
5	40813A	Carbon Brushes	2
6	50618A	Commutator End Bracket	1
7	638313	Load Spring	1
8	53100A	Disc	1
9	902679	Ball Bearing	1
10	902648	Ball Bearing	1
11	59803A	Neoprene Washer	1
12	50610A	Fan End Bracket	1
13	58501A	Spacer	1
14	53914A	Vacuum Fan	2
15	658201	Spacer	1
16	53908A	Stationary Fan	1
17	57904A	Fan Shell	1
18	980205	Washer	1
19	920329	Nut	1
20	53906A	Fan	1

CLARKE TECHNOLOGY EXT-10, 15  
 Pump 45905C/44906B - 11/96

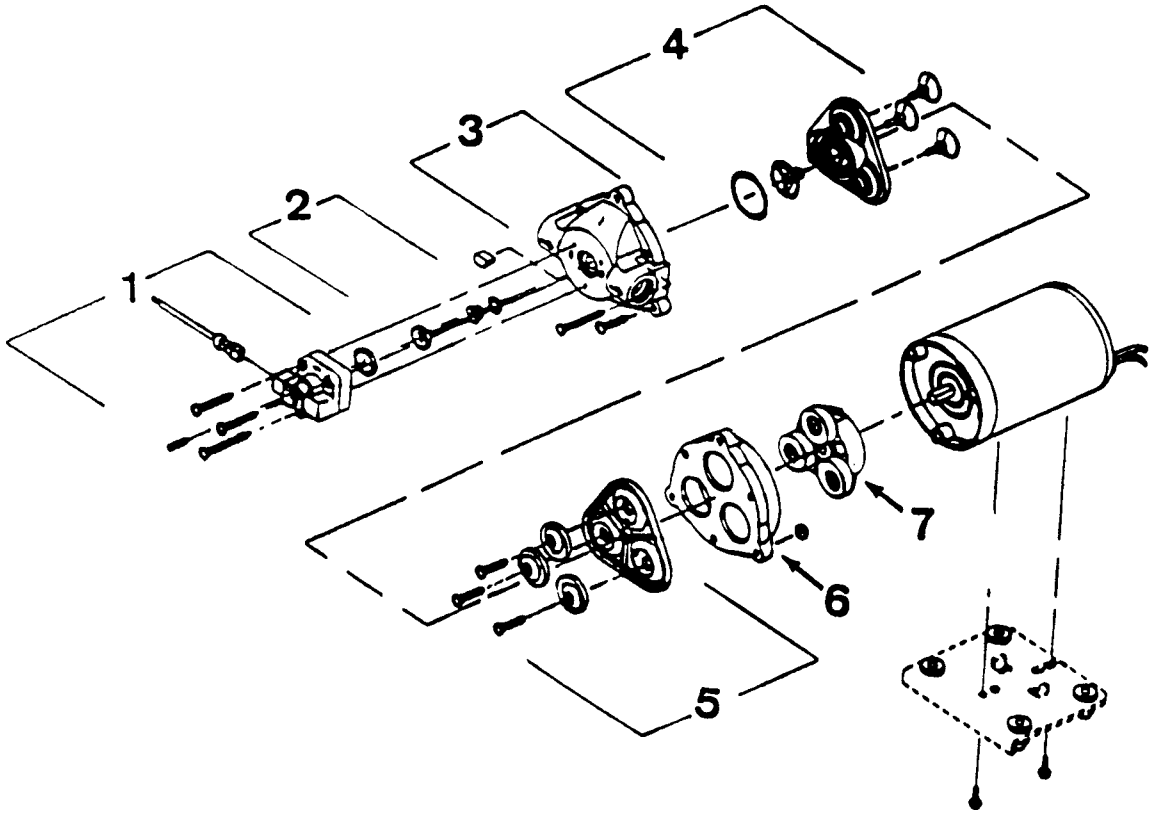


Ref #	Part No.	Description	Qty
1	55372A	Kit, Switch- Viton 80/100 psi	1
2	55374A	Kit, Dual Check Valves	1
3	54881A	Housing, Upper	1
4	55373A	Kit, Valve	1
5	53201A	Kit, Diaphragm	1
6	54882A	Housing, Lower	1
7	54837A	Kit, Drive assembly (45905C)	1
8	15884A	Kit, Drive Assembly (45906B)	1

**IVIE Enterprises**

[www.ivie-ent.com](http://www.ivie-ent.com) Ph:(918)254-5161 or (888)262-5161 Fax:(918)250-4807

CLARKE TECHNOLOGY EXT-10, 15  
 Pump 45929A - 11/96

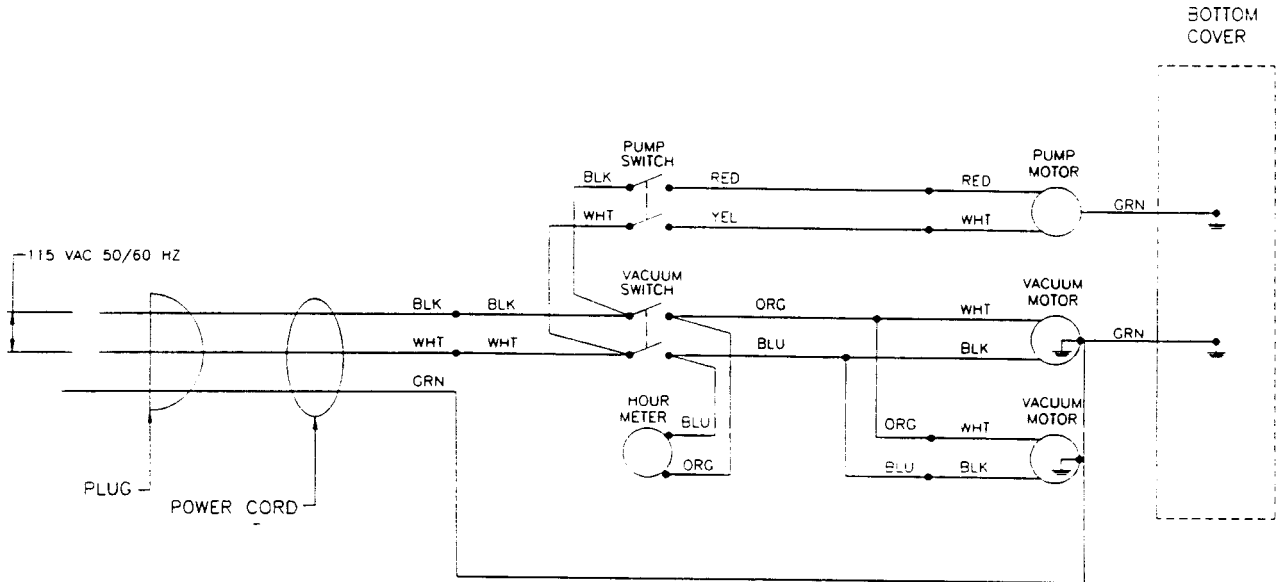


Ref #	Part No.	Description	Qty
1	53056A	Kit, Switch- Viton 80/100 psi	1
2	52908A	Kit, Check Valve	1
3	54881A	Housing, Upper	1
4	59783A	Kit, Valve	1
5	53205A	Kit, Diaphragm	1
6	54882A	Housing, Lower	1
7	52907A	Kit, Drive Assembly	1

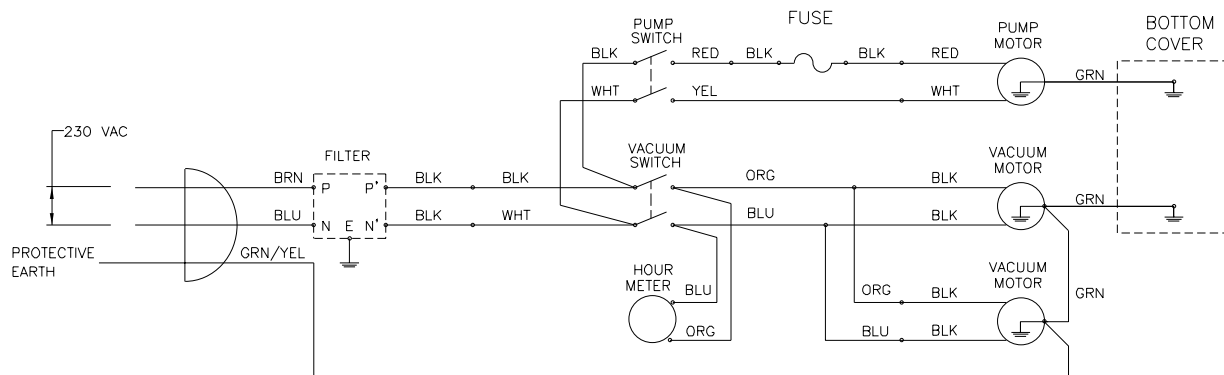
**IVIE Enterprises**

[www.ivie-ent.com](http://www.ivie-ent.com) Ph:(918)254-5161 or (888)262-5161 Fax:(918)250-4807

**CLARKE TECHNOLOGY EXT-10, 15**  
**Wiring Diagram 120V - 11/96**



**CLARKE TECHNOLOGY EXT-10, 15**  
**Wiring Diagram 230V - 11/98**



**IVIE Enterprises**

[www.ivie-ent.com](http://www.ivie-ent.com) Ph:(918)254-5161 or (888)262-5161 Fax:(918)250-4807