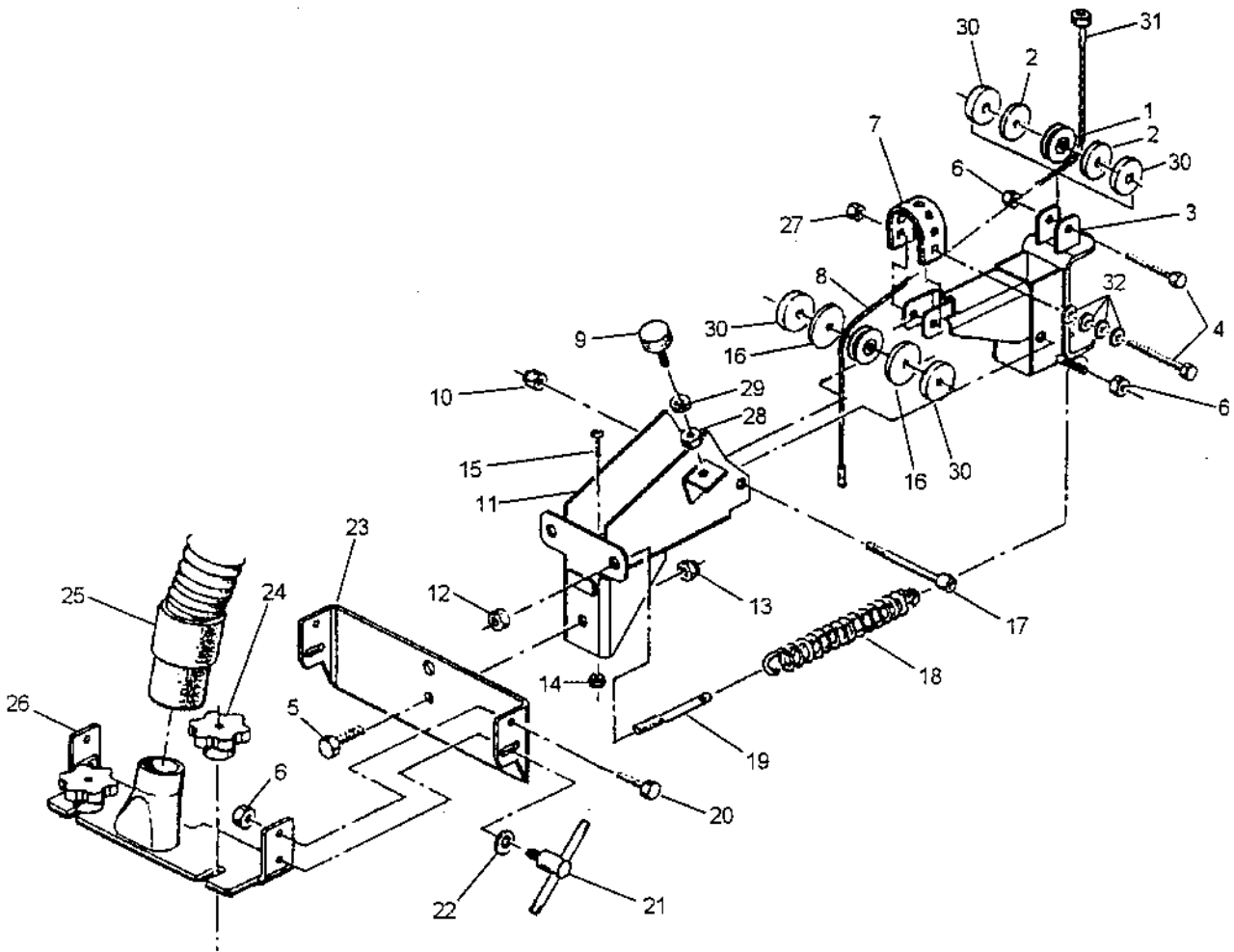


CLARKE TECHNOLOGY
Encore S28XP/S33XP/S38XP
Swing Arm Assembly Drawing 4/01



IVIE Enterprises

www.ivie-ent.com

Ph:(918)254-5161 or (888)262-5161 Fax:(918)250-4807

CLARKE TECHNOLOGY
Encore S28XP/S33XP/S38XP
Swing Arm Assembly Drawing 4/01

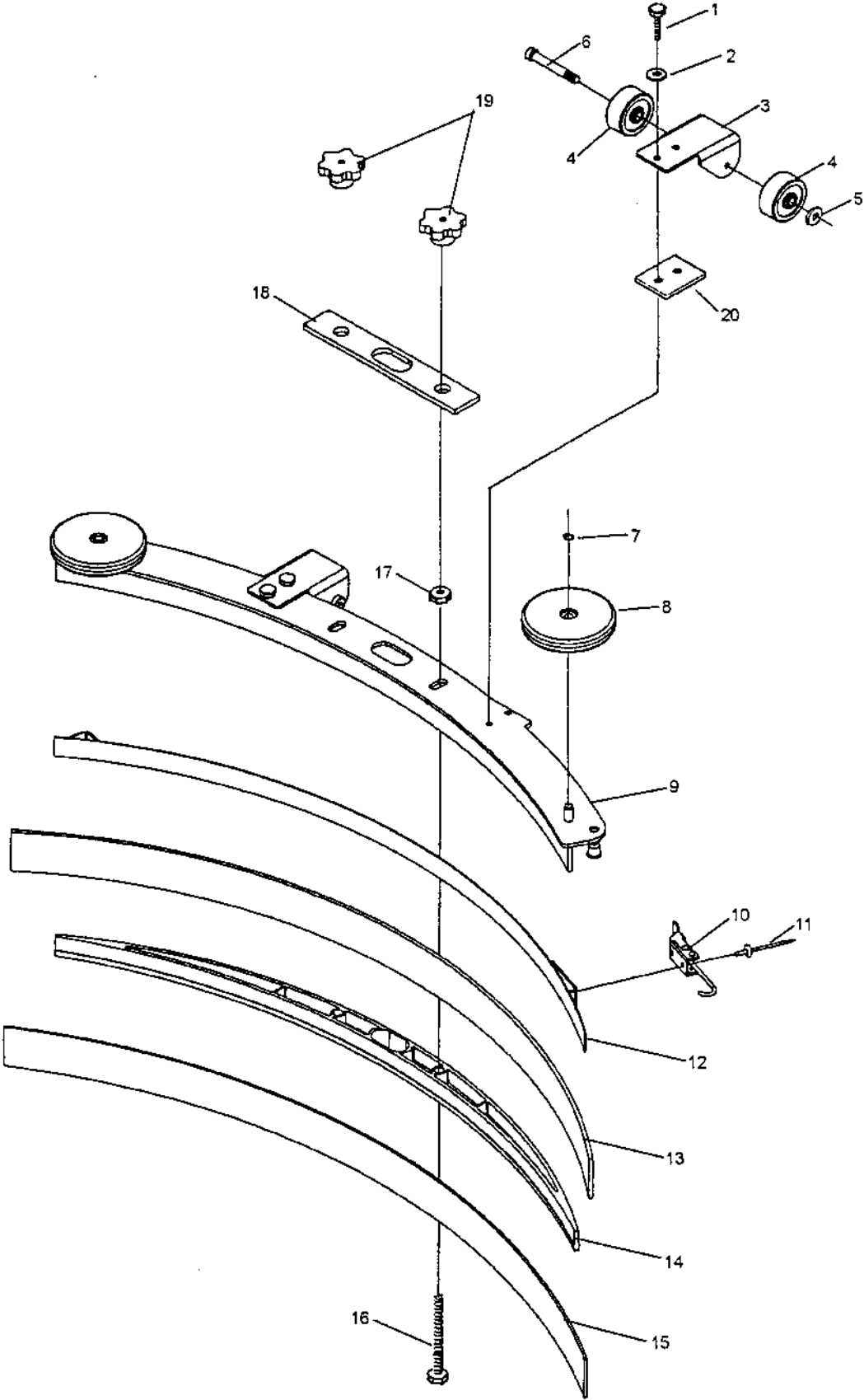
Ref #	Part No.	Description	Qty
1	57275A	Pulley	2
2	87623A	Washer, Nylon 1¼x¼x1/8	2
3	60452A	Swing Arm, Front	1
4	86004A	Screw, .25-20 x 1.50	2
5	85727A	Screw, .375-16 x 1.00	1
6	81104A	Nut, Hex ESNA SS	5
7	38021A	Strap	1
8	61679A	Cable, Lower —	1
9	51613A	Bumper	1
10	920110	Nut, ESNA	2
11	60454A	Swing Arm, Rear	1
12	920256	Nut, Hex	2
13	81105A	Nut, ESNA SS	1
14	920296	Nut, 10-24 ESNA SS	1
15	962798	Screw, 10-24 x .50	1
16	87624A	Washer, Nylon 1½x¼x1/8	2
17	80015A	Screw, Shoulder	1
18	53423A	Spring, Squ. Pressure	2
19	68016A	Stud	2
20	170915	Screw, SS Hex	2
21	64905A	T Handle	3
22	980651	Washer, Flat .312	1
23	60678A	Pivot Bracket	1
24	25201A	Knob	2
25	35192A	Hose, Squeegee Rec.	1
26	61267A	Tube Bracket	1
27	81217A	Nut, ½-20	1
28	920208	Nut, Hex ¼-20	1
29	980657	Washer, ¼ Lock	1
30	87625A	Washer, Nylon 1¼x¼x1/32	4
31	81303A	Nut, ¼-28	1
32	87026A	Washer	4

IVIE Enterprises

www.ivie-ent.com

Ph:(918)254-5161 or (888)262-5161 Fax:(918)250-4807

CLARKE TECHNOLOGY
Encore S28XP and S33XP
Squeegee Assembly Drawing 4/01



IVIE Enterprises

www.ivie-ent.com

Ph:(918)254-5161 or (888)262-5161 Fax:(918)250-4807

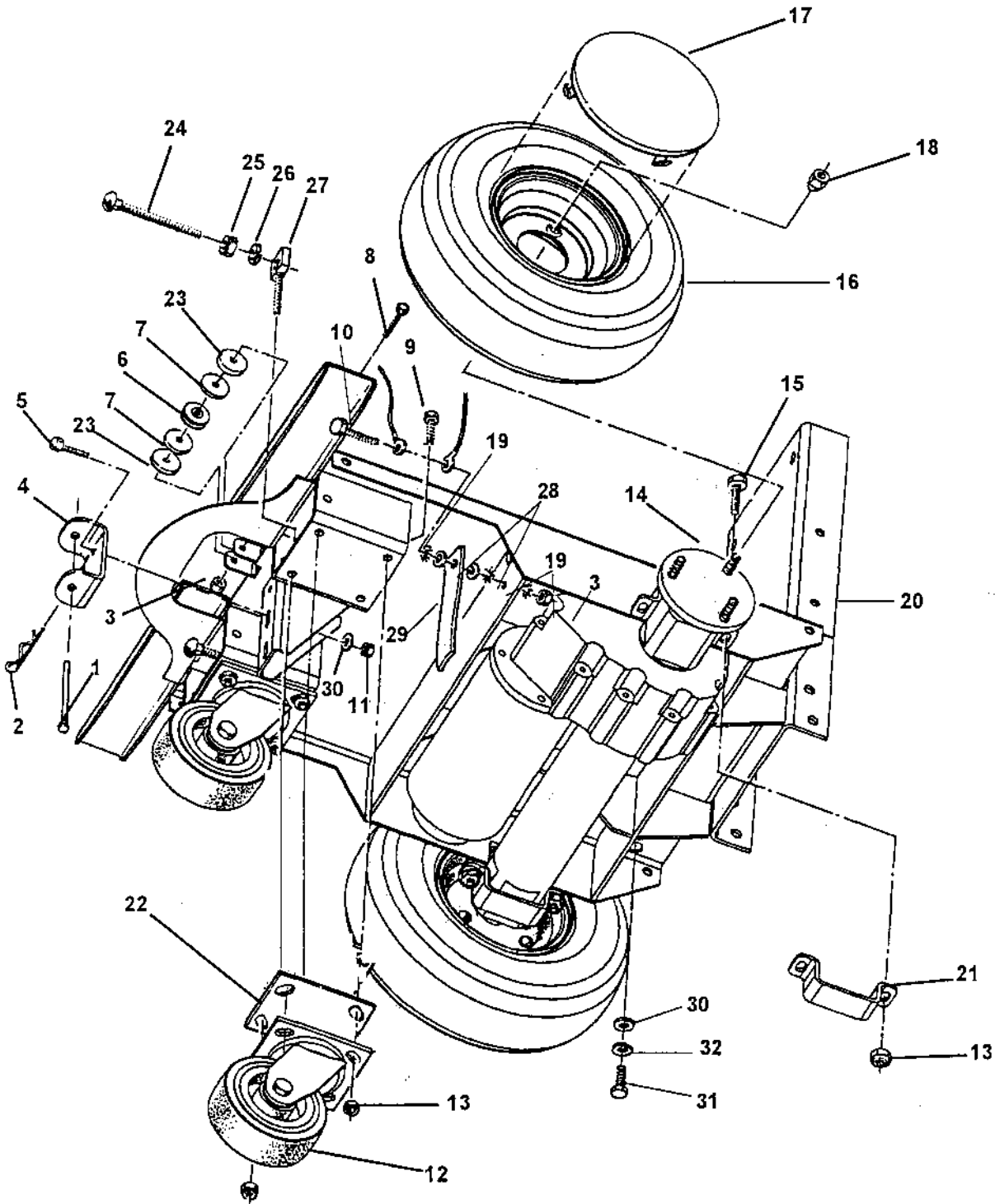
CLARKE TECHNOLOGY
Encore S28XP and S33XP
Squeegee Assembly Parts List 4/01

Ref. #	Part No.	Description		
			S33XP	S28XP
Qty	Qty			
1	962720	Screw, ¼-20 x ½ Hex SS	4	4
2	980657	Washer, ¼ Lock	4	4
3	60243A	Bracket, Squeegee Wheel	2	2
4	30049B	Wheel, Squeegee	4	4
5	81104A	Nut, ¼-20	2	2
6	60254A	Bolt, Shoulder 5/16x 2¼	2	2
7	50958A	Ring, 3/8 ID Snap	2	2
8	30048A	Wheel, Guide, 4 Inch Diameter	2	2
9	60272A	Channel, Squeegee Weldment 39"	1	-
	60234A	Channel, Squeegee Weldment 32"	-	1
10	50835A	Latch, Squeegee Clamp	1	1
11	930086	Rivet, 3/16 x .450 Aluminum	2	2
12	60252A	Strap, Clamp, Squeegee Retainer 39"	1	-
	60232A	Strap, Clamp, Squeegee Retainer 32"	-	1
13	30069A	Blade, Rear, Gum Rubber, 39"	1	-
	30067A	Blade, Rear, Gum Rubber, 32"	-	1
14	30058A	Spacer, Squeegee 39"	1	-
	30047A	Spacer, Squeegee 32"	-	1
15	30091A	Blade, Front Ribbed 39"	1	-
	30066A	Blade, Front Ribbed 32"	-	1
16	80011A	Screw, 3/8-16 x 3	2	2
17	81301A	Nut, 3/8-16 Jam SS	2	2
18	34260B	Gasket	1	1
19	25201A	Knob	2	2
20	60358A	Shim, Squeegee Wheel	2	2

IVIE Enterprises

www.ivie-ent.com Ph:(918)254-5161 or (888)262-5161 Fax:(918)250-4807

CLARKE TECHNOLOGY
Encore S28XP/S33XP/S38XP
Traverse System Assembly Drawing 4/01
Drawing 19021A



IVIE Enterprises

www.ivie-ent.com

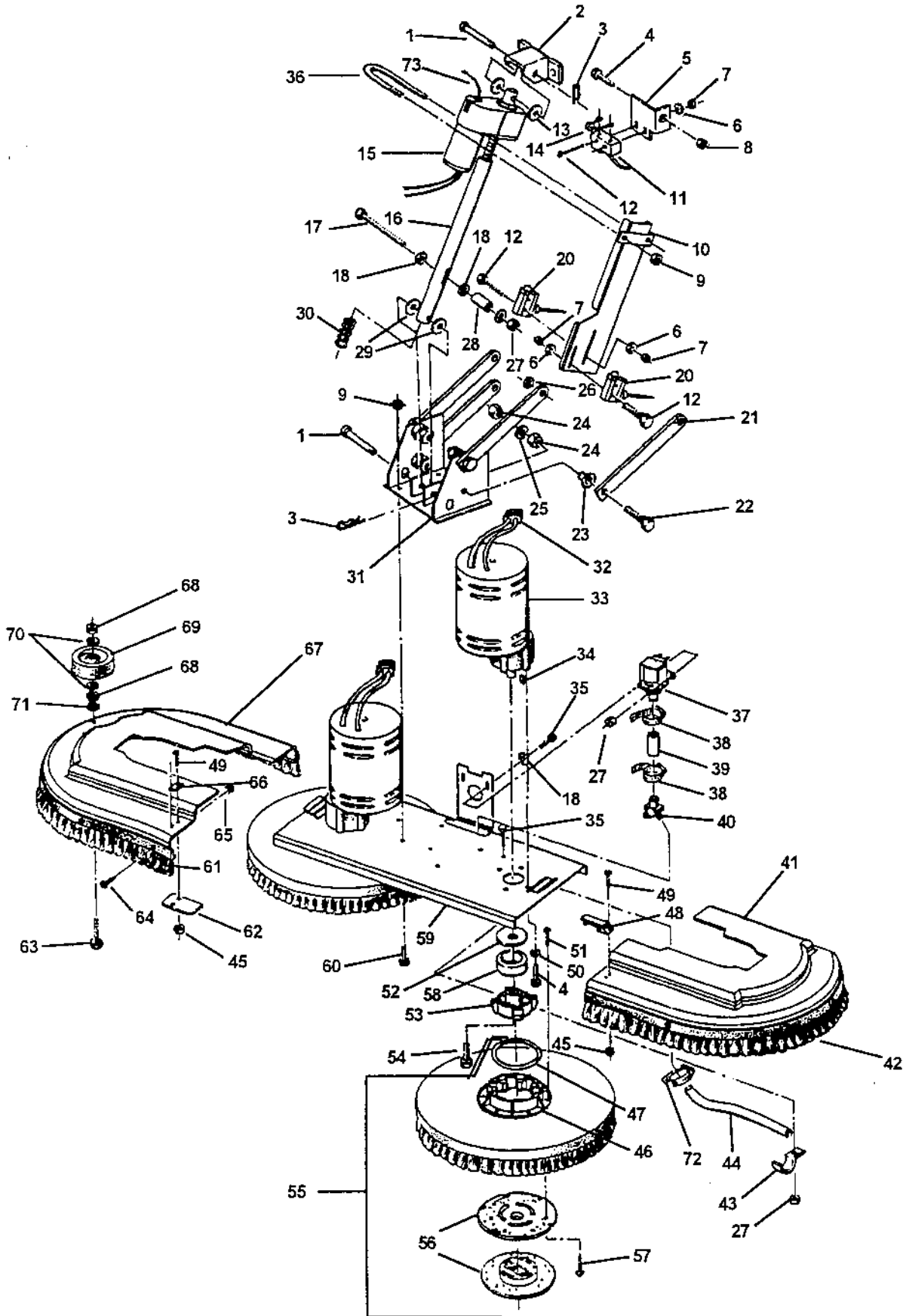
Ph:(918)254-5161 or (888)262-5161 Fax:(918)250-4807

CLARKE TECHNOLOGY
Encore S28XP/S33XP/S38XP
Traverse System Assembly Parts List 4/01
Drawing 19021A

Ref #	Part No.	Description	Qty
1	66531A	Swing Arm Pin	1
2	836711	Hair Pin	1
3	81104A	Nut, .25-20 ESNA	2
4	69877A	Swing Bracket	1
5	85811A	Screw, .312-18 x .75	2
6	57275A	Cable Pulley	1
7	87623A	Washer, Nylon 1 1/4x1/4IDx.120	2
8	86004A	Screw, .25-20 x 1.50	1
9	85703A	Screw, .375-16 x 1.50	6
10	85700A	Screw, .25-20 x 1	1
11	920110	Nut, .312-16 ESNA	2
12	899769	Caster Assembly	2
13	81105A	Nut, .375-16 ESNA	12
14	59116A	Transaxle, Imperial (see page 46, 45 for parts)	1
15	85730A	Screw, Hex	4
16	59969A	Wheel Assembly*	2
	59955A	Wheel, Foam Filled (opt.)	2
17	32417B	Wheel Cover	2
18	81221A	Lug Nut, 50-20 UNF	6
19	980614	Washer, Star Lock .25	3
20	60230A	Main Frame	1
21	65963A	Transaxle Mount	2
22	69712A	Spacer	2
23	87625A	Washer, Nylon 1 1/4x1/4IDx3/32	2
24	80011A	Screw, 3/8-16 x 3	2
25	81207A	Nut, 3/8-16	2
26	170883	Washer, Lock 3/8	2
27	58419A	Stud, 3/8M x 3/8F	2
28	980205	Washer, .25 Fender	2
29	69639A	Strap, Static	1
30	980645	Washer, Flat 3/8	6
31	962244	Screw, 3/8-16 x 3/4	4
32	980638	Lockwasher 3/8	4

*30039A tube, inner (included in item #16) 1 Ref.

CLARKE TECHNOLOGY
Encore S28XP/S33XP/S38XP
Brush Head Assembly Drawing 4/01
Drawing # 11453A, 11449A, 11452A



IVIE Enterprises

www.ivie-ent.com

Ph:(918)254-5161 or (888)262-5161 Fax:(918)250-4807

CLARKE TECHNOLOGY
Encore S28XP/S33XP/S38XP
Brush Head Assembly Parts List 5/01

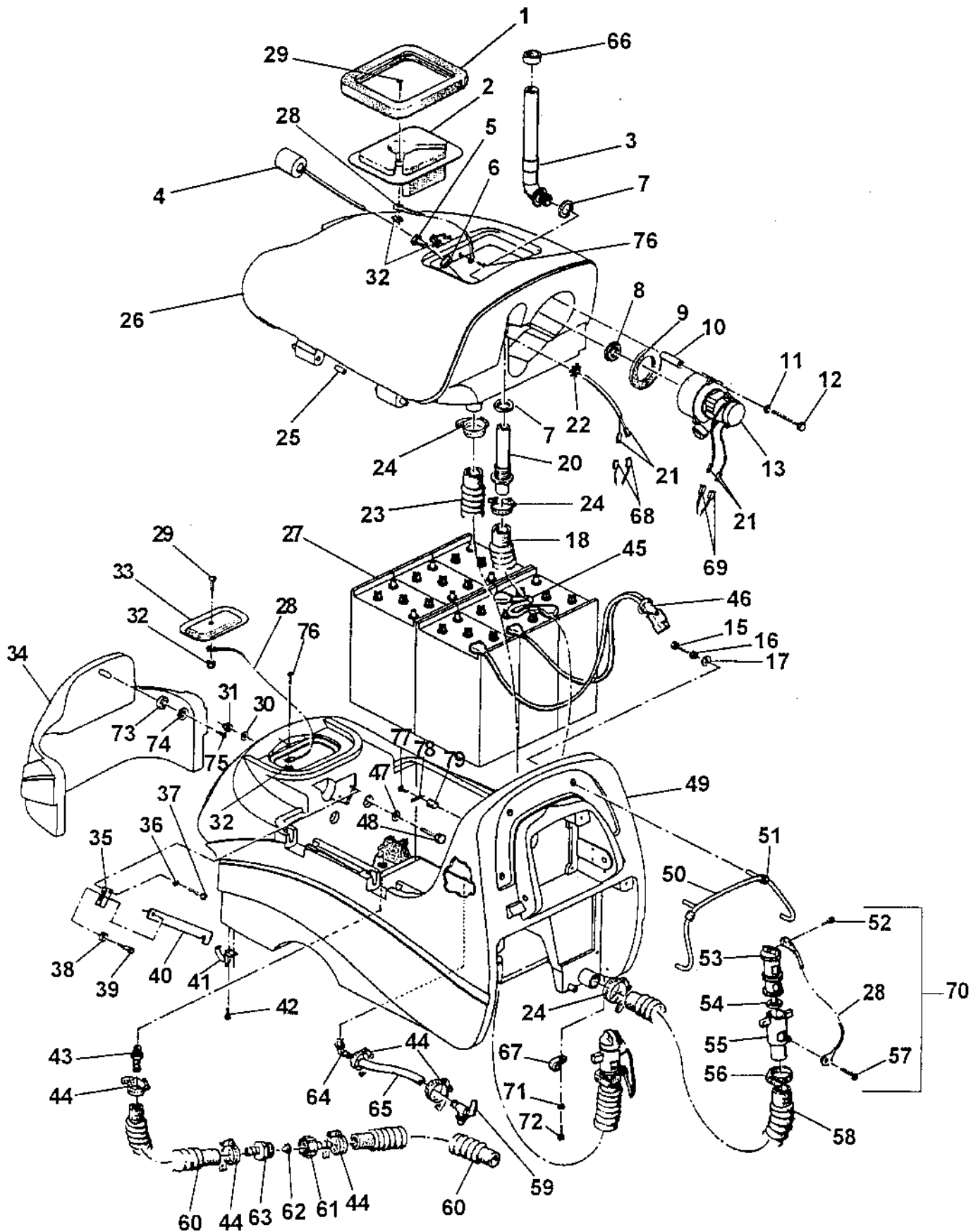
Ref #	Part No.	Description	Qty	Model	Ref #	Part No.	Description	Qty	Model
1	82501A	Pin	2	All	43	782002	Clamp	2	All
2	63433A	Main Frame	Ref	All	44	30453A	Brush Hose	2	All
3	766780	Hair Pin	2	All	45	81109A	Nut, 8-32 ESNA SS	4	All
4	962244	Screw, .375-16x.75	9	All	46	833802	Gimbal, Female	2	All
5	69883A	Switch Bracket	1	All	47	838301	Brush Holder Spring	2	All
6	980608	Washer, #6	6	All	48	55721A	Latch	1	All
7	920056	Nut, #6-32 ESNA	6	All	49	962992	Screw, 8-32x.62 SS	4	All
8	81105A	Nut, .375-16 ESNA	1	All	50	980638	Washer, Lock .375	8	All
9	920110	Nut, .312-18 ESNA	6	All	51	962495	Screw, .25-20x1.00Pn Hd	6	All
10	60472A	Switch Mount	1	All	52	59856A	Rubber Washer	2	All
11	47374A	Lever, Switch	1	All	53	34400B	Gimbal, Male	2	All
12	962980	Screw, #6-32x1.00 PN	6	All	54	962714	Screw, .312-18x.75 Soc.	2	All
13	38708A	Nylon Spacer	2	All	55	11427B	Poly Brush Assembly-14	2	28
14	42401A	Diode	1	All		11424B	Poly Brush Assembly-17	2	33
15	50208A	Actuator & Tube Asm.	1	All		11434B	Poly Brush Assembly-19	2	38
16	69188A	Head Pressure Tube	1	All		11426B	Grit Brush Assembly-14	2	28
17	85602A	Screw, .25-20 x 3	1	All		11425B	Grit Brush Assembly-17	2	33
18	87007A	Washer, Flat .25	5	All		11433B	Grit Brush Assembly-19	2	38
20	47422B	Whisker Switch	2	All		17521C	Pad Driver Assembly-14	2	28
21	63032A	Linkage Bar	4	All		17520C	Pad Driver Assembly-17	2	33
22	85838A	Screw, .50-201.50	8	All		17524B	Pad Driver Assembly-19	2	38
23	67705B	Sleeve Bearing	8	All	56	56941A	Center-Lok Asm. (Pad Driver Only)	2	All
24	920278	Nut, Jam 50-20	16	All	57	962737	Screw, 10-16x.88 (Pad Driver Only)	6	All
25	980626	Washer, Lock .50	8	All	58	61658A	Gimbal Collar	2	All
26	980673	Washer *	4	All	59	66232A	Brush Plate-28	1	28
27	81104A	Nut, .25-20 ESNA	5	All		66233A	Brush Plate-33	1	33
28	51278A	Sleeve	1	All		66234A	Brush Plate-38	1	38
29	38723A	Nylon Spacer	2	All	60	85811A	Screw, .312-18x.75 Hex	4	All
30	53421A	Head Pressure Spring	1	All	61	38243A	Right Skirt	1	28
	53422a	Head Pressure Spring	1	All		38245A	Right Skirt	1	33
31	65966A	Brush Head Mount	1	All		38247A	Right Skirt	1	38
32	41601A	Connector	4	All	62	69186A	Latch Tab	1	All
	41602A	Housing	4	All	63	85610A	Screw, .375-16x2.5 SS Pn	1	All
33◆	45033B	Brush Motor .75 HP (includes item #32)	2	28,33	64	85616A	Screw, 10-22x.62 Pn SS	11	All
	45036B	Brush Motor 1.00 HP (includes item #32)	2	38		85616A	Screw, 10-22x.62 Pn SS	12	All
34	915102	Key	2	All	65	82004A	"T" Nut 10-32	11	All
35	170915	Screw, Hex	4	All		82004A	"T" Nut 10-32	12	All
36	80044A	"U" Bolt	1	All	66	55451A	Keeper	1	All
37	48703A	Electric Valve	1	All	67	30016A	Right Brush Housing	1	28
38	722030	Hose Clamp	2	All		30012A	Right Brush Housing	1	33
39	30455A	Hose	1	All		30014A	Right Brush Housing	1	38
40	38014A	Solution Splitter	1	All	68	920248	Nut, .375-16 Jam Thin ESNA	2	All
41	35250B	Left Brush Housing	1	28	69	59950A	Guide Wheel	1	All
	35244B	Left Brush Housing	1	33	70	980645	Washer, Flat .375	2	All
	35246B	Left Brush Housing	1	38	71	980638	Lockwasher	1	All
42	38242A	Left Skirt	1	28	72	722021	Hose Clamp	2	All
	38244A	Left Skirt	1	33	**NI	77353A	Label, Front Motor	1	All
	38246A	Left Skirt	1	38	**NI	77352A	Label, Front Motor	1	All
					**NI	77091A	Label, Moving Parts	2	All

*Used only as required to square up linkage bars #21 to the frame.

**Attach to Brush Motor.

NOTE: ◆ indicates a change has been made since the last publication of this manual.

CLARKE TECHNOLOGY
 Encore S28XP/S33XP/S38XP
 Solution/Recovery System Assembly Drawing 4/01



IVIE Enterprises

www.ivie-ent.com

Ph:(918)254-5161 or (888)262-5161 Fax:(918)250-4807

CLARKE TECHNOLOGY
Encore S28XP/S33XP/S38XP
Solution/Recovery System Assembly Parts List 4/01

Ref #	Part No.	Description	Qty	Model
1	34265A	Recovery Lid Gasket	1	All
2	36204A	Recovery Lid	1	All
3	39338A	Stand Tube	1	All
4	40002A	Float Switch (include #5 & 2 each #21 & #68)	1	All
5	56459A	Strain Relief	1	All
6	87612A	Seal	1	All
7	837304	O-Ring	2	All
8*	920797	Nut	1	All
9	643418	Gasket	1	All
10	58533A	Vac Motor Spacer	3	All
11	87026A	Washer, Flat .25	3	All
12	85728A	Screw, .25-20 x 4.00 Hex	3	All
13	45019A	Vac Motor (also order 2 each #21 and #69)	1	All
14	77365B	Label, Battery Installation	1	All (NI*)
15	85815A	Screw, .312-18x1.25 Hex	4	All
16	980652	Washer, Lock .312	4	All
17	980205	Washer, Fender .312	4	All
18	35192A	Vac Hose	1	All
19	77093A	Label, Falling Parts	1	All (NI*)
20	30133A	Squeegee Adapter	1	All
21	41809A	Contact	4	All
22	82100A	Locknut	1	All
23	35165A	Recovery Tank Drain Hose	1	All
24	872010	Hose Clamp	3	All
25	36903A	Hinge Pin	4	All
26	38813C	Recovery Tank, incl #25	1	All
27	881317	Battery - 250 AH - 6 Volt	6	All
	891384	Battery - 330 AH - 6 Volt	6	All
	40704A	Battery - 370 AH - 6 Volt	6	All
28	38020A	Strap	4	All
29	962798	Screw, 10-24x.5 Pan	2	All
30	980645	Washer, Flat .375	2	All
31	81105A	Nut, .375-16 ESNA	2	All
32	920296	Nut, 10-24 ESNA	4	All
33	36200A	Solution Lid	1	All
34	32409B	Front Cover	1	28, 33
	32419B	Front Cover	1	38

*Recommended torque
175 ± 5 inch/ pounds.

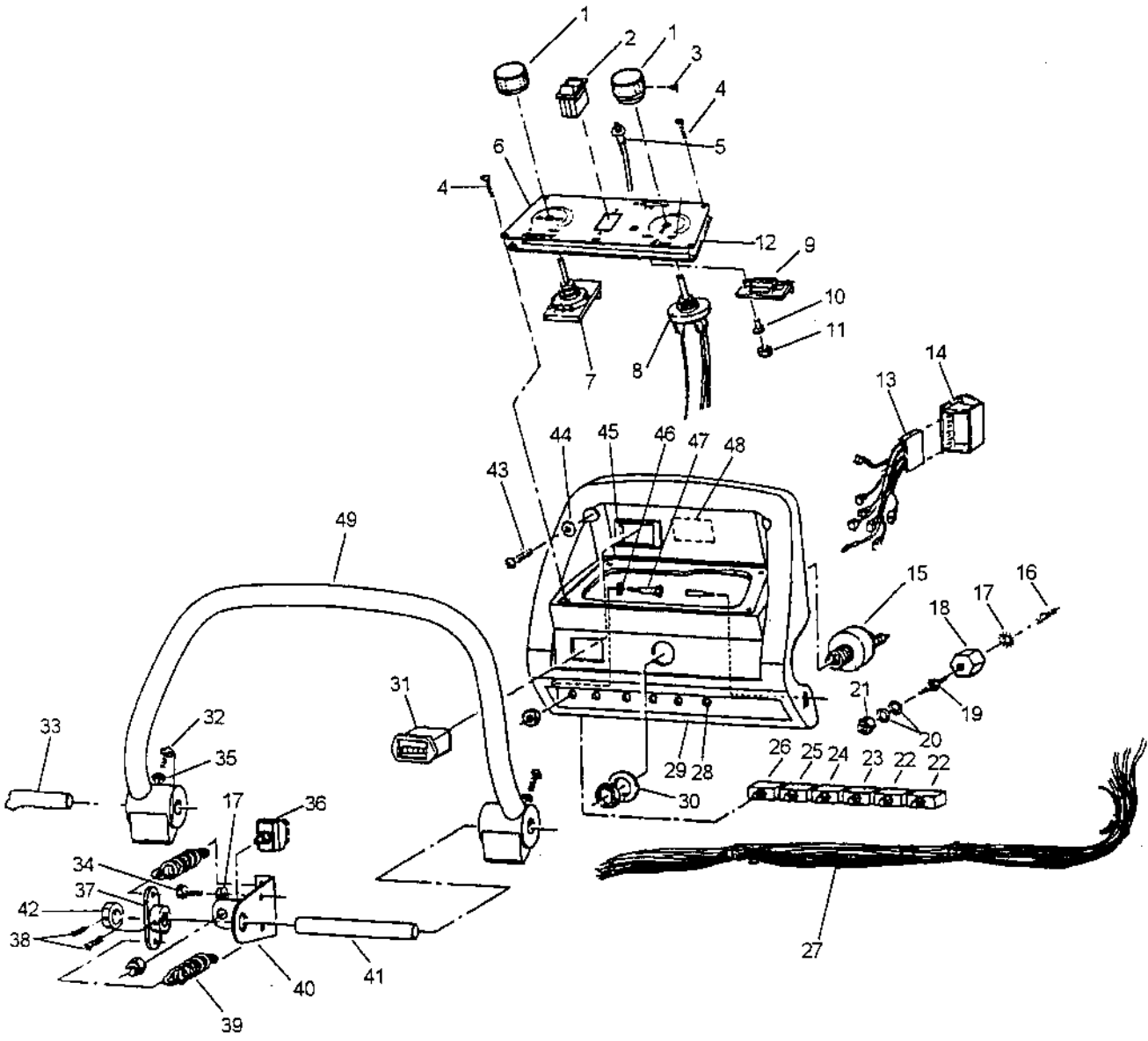
(NI*) = Not Illustrated

Ref #	Part No.	Description	Qty	Model
35	69879A	Support Bracket	1	All
36	170892	Washer, Lock .25	2	All
37	170915	Screw, .25-20x.75 SS Hex	2	All
38	87622A	Washer, Nylon 5/16x6/8x1/32	1	All
39	80043A	Screw, Shoulder .25-20x25	1	All
40	69548A	Recovery Tank Support	1	All
41	55723A	Latch	2	All
42	962027	Screw, 8-32x.50 Pn.	4	All
43	50359A	Solution Tank Adapter	1	All
44	722030	Hose Clamp	6	All
45	842406	Series Cable - 9"	3	All
	41206A	Series Cable - 16"	2	All
46	41208A	Battery Cable	1	All
47	87054A	Washer, Fender .375x1¼	2	All
48	85703A	Screw, .375-16x1.50 Hex	2	All
49	38812C	Solution Tank	1	All
50	64900A	Stationary Handle	1	All
51	30454A	Hose	2	All
52	962987	Screw, 10-24x.375 Pn.	2	All
53	833901	Drain Valve Handle	2	All
54	833407	Drain Gasket	2	All
55	839401	Drain Valve	2	All
56	832002	Hose Clamp, Drain Valve	2	All
57	962943	Screw, 8-18x.5 Pn.	2	All
58	30449A	Drain Hose	1	All
59	59614A	Battery Drain Valve	1	All
60	30445A	Solution Hose	2	All
61	50358A	Connector	1	All
62	838517	Filter Screen	1	All
63	830214	Hose Adapter	1	All
64	822802	Elbow	1	All
65	30453A	Hose	1	All
66	58069A	Vac Filter	1	All
67	98465A	Clamp, Metal	1	All
68	43402A	Housing, Blue	2	All
69	43401A	Housing - Black	2	All
70	839410	Asm., Drain Valve	1	All
71	980657	Washer, ¼ Lock	1	All
72	962139	Screw, ¼-20x5/8	1	All
73	39713A	Washer, Rubber	1	All
74	87032A	Washer	1	All
75	85524A	Screw	1	All
76	962666	Screw	2	All
77	962113	Screw 10-32x1	1	All
78	51867A	Cable Clamp	1	All
79	81800A	Well Nut	1	All
80	77092A	Label, Gases & Chem.	1	All (NI*)

IVIE Enterprises

www.ivie-ent.com Ph:(918)254-5161 or (888)262-5161 Fax:(918)250-4807

CLARKE TECHNOLOGY
Encore S28XP/S33XP/S38XP
Control Housing Assembly Drawing 4/01
Drawing# 13713A

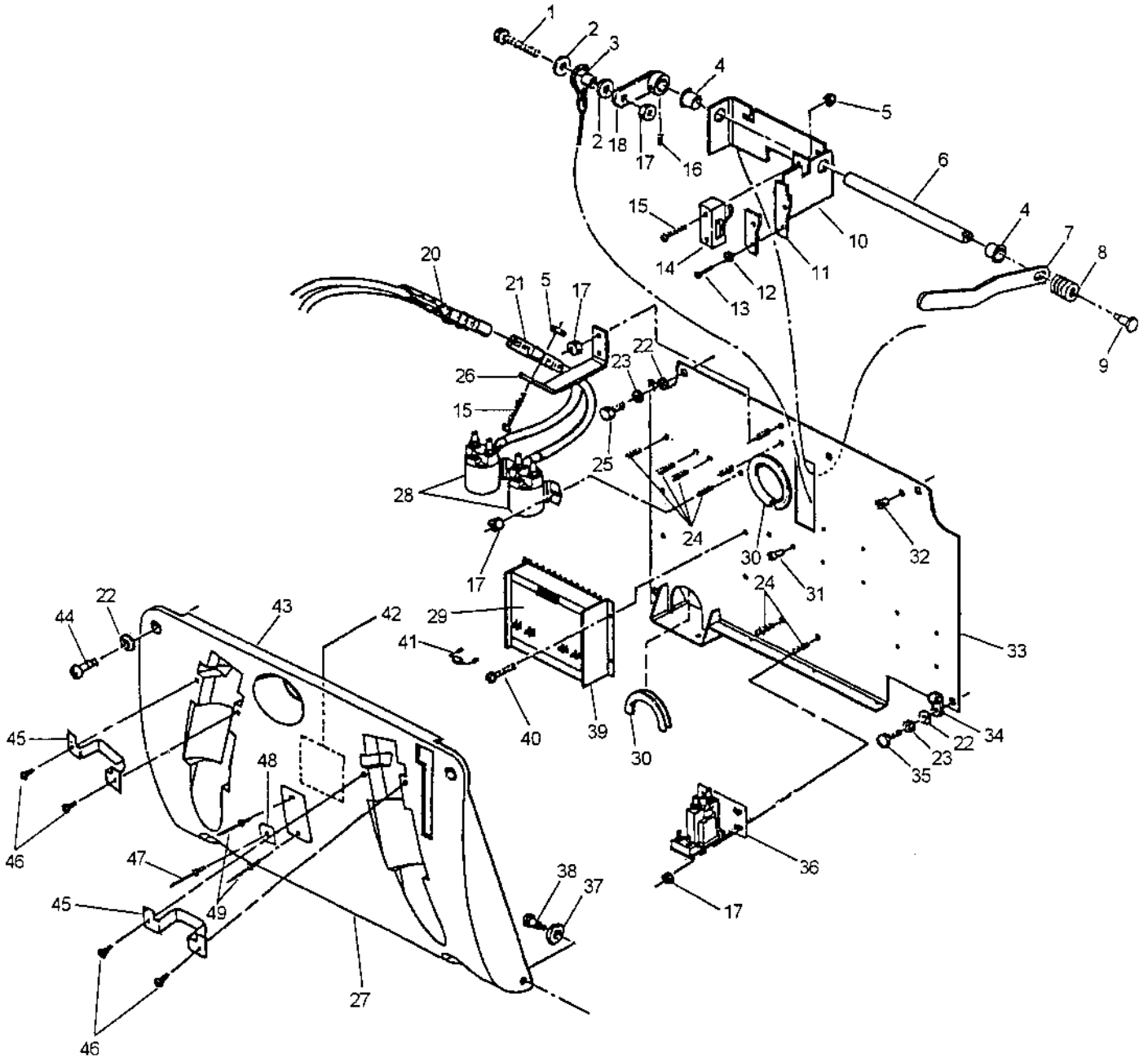


CLARKE TECHNOLOGY
Encore S28XP/S33XP/S38XP
Control Housing Assembly Parts List 4/01

Ref #	Part No.	Description	Qty
1	55502A	Knob	2
2	47381B	Switch, Head up & down Rocker	1
3	962262	Screw, 8-32 x .25 Set	2
4	85612A	Screw, 10-24 x .375 Pn.	6
5	85388A	Screw, 10-24 x 1/2	2
6	77343B	Control Panel Label	1
	60058A	Control Panel	1
7	44308A	Solution Flow Module	1
8	49700B	Speed Control Harness	1
9	44416B	Battery Meter	1
10	38724B	Spacer	2
11	920056	Nut, 6-32 ESNA	2
12	30022A	Gasket, Panel	1
13	40085A	Harness, Sequencer	1
14	40083B	Module Sequencer	1
15	47380A	Key Switch	1
16	170781	Screw, 1/4-20 x 3/4 Set	1
17	980657	Lock Washer	3
18	854849	Insulator	1
19	83302A	Stud	1
20	87026A	Washer	2
21	81104A	Nut, 1/4-20 ESNA	1
22	41431A	Circuit Breaker 35A	2
23	41448A	Circuit Breaker 30A Scr.	1
24	41422A	Circuit Breaker 25A Scr.	1
25	41423A	Circuit Breaker 5A	1
26	41430A	Circuit Breaker 1.5A	1
27	40179A	Main Harness (S Series only)	1
28	60042A	Stud, 5/16 x 1/4 -20 Thread	1
29	35252B	Control Housing	1
30	87052A	Nylon Washer, Key Switch	1
31	912226	Hour Meter	1
32	85390A	Screw, .25-20 x 1.25 Pn	2
33	66549A	Pin, Left Hand	1
34	962139	Screw, .25-20 x .62	2
35	170892	Washer, Lock .25	2
36	10052A	Toggle Switch	1
37	60662A	Centering Bracket	1
38*	962304	Screw, Set .312-18 x .5	4
39	53038A	Control Handle Spring	2
40	61266A	Control Bracket	1
41	66548A	Pin, Right Hand	1
42	61651A	Collar	1
43	85391A	Screw, .25-20 x .62 Pn	2
44	87007A	Washer	2
45	66871A	Retainer Key/Hour Meter	1
46	980651	Washer, Nylon IDxODx.034	1
47	80043A	Screw, Shoulder	1
48	77351B	Label, Control Wiring	1
49	24309A	Control Handle	1

*#38 must use red loctite set screws.

CLARKE TECHNOLOGY
Encore S28XP/S33XP/S38XP
Rear Cover Assembly Drawing 4/01

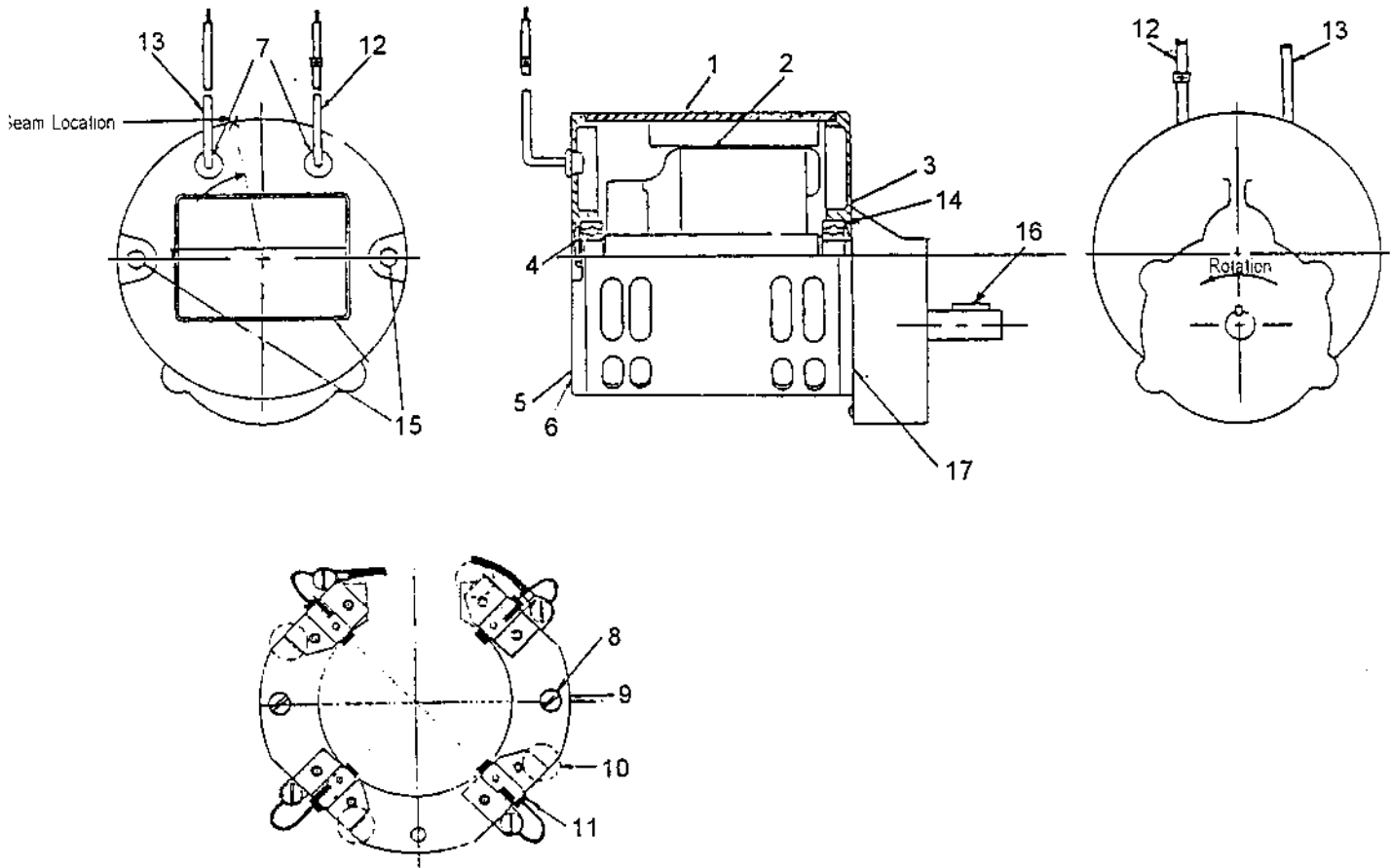


CLARKE TECHNOLOGY Encore
S28XP/S33XP/S38XP
Rear Cover Assembly Parts List 4/01

Ref #	Part No.	Description	Qty
1	85700A	Screw, .25-20x1.00 Hex	1
2	87026A	Washer, Flat .25	2
3	608210	Spacer	1
4	902731	Nylon Bearing	2
5	920056	Nut, 6-32 ESNA	4
6	67476A	Shaft	1
7	65629A	Squeegee Lever	1
8	438360	Spring	1
9	960510	Shoulder Screw	1
10	61265A	Squeegee Lift Bracket	1
11	68643A	Wear Plate	1
12	980675	Washer	2
13	962546	Screw, 10-24 x .50 Pn	2
14	47374A	Switch	1
15	962980	Screw, 6-32 x 1.00 Pn	4
16*	962304	Screw, .312-18 x .50 Set	2
17	81104A	Nut, .25-20 ESNA	9
18	65628A	Lever Weld.	1
19	61682A	Upper Cable Assembly	1
20	41208A	Battery Cable	Ref
21	41140A	Cable Assembly	1
22	87007A	Washer	6
23	980657	Washer, Lock	4
24	83307A	Stud, 1/4-20	8
25	962139	Screw, .25-20x.62 Hex	5
26	69878A	Plug Bracket	1
27	77079A	Label, w/Brake Warning	1
	77080A	Label, w/o Brake Warning	1
28	41801A	Solenoid - Main / Brush	2
29	77194B	Label, Traverse	1
30	193951	Trim, 4 1/2" & 8"	1
31	54763A	Insert	4
32	54764A	Insert	2
33	69372A	Lower Electrical Panel	1
34	98465A	Clamp, Metal 7/16	1
35	85806A	Screw, 1/4-20 x 3/4 Hex	1
36	40125A	Solenoid - Vac	1
37	980651	Washer	2
38	80043A	Shoulder Screw	2
39	41135C	Traverse, Control Board	1
40	962992	Screw, 8-32 x.74 Pn	4
41	42405A	Diode	1
42	77355A	Label	1
43	32418B	Rear Cover	1
44	85391A	Screw, .25-20 x.62 Pn	2
45	60223A	Hose Bracket	2
46	962957	Screw, 10-16 x 1/2	4
48	77221A	Serial Tag	1
47	83010A	Rivet, Pop	1
49	930093	Rivet	2

*#16 must use red loctite.

CLARKE TECHNOLOGY
Encore S28XP/S33XP/S38XP
Brush Motor #45033A 4/01

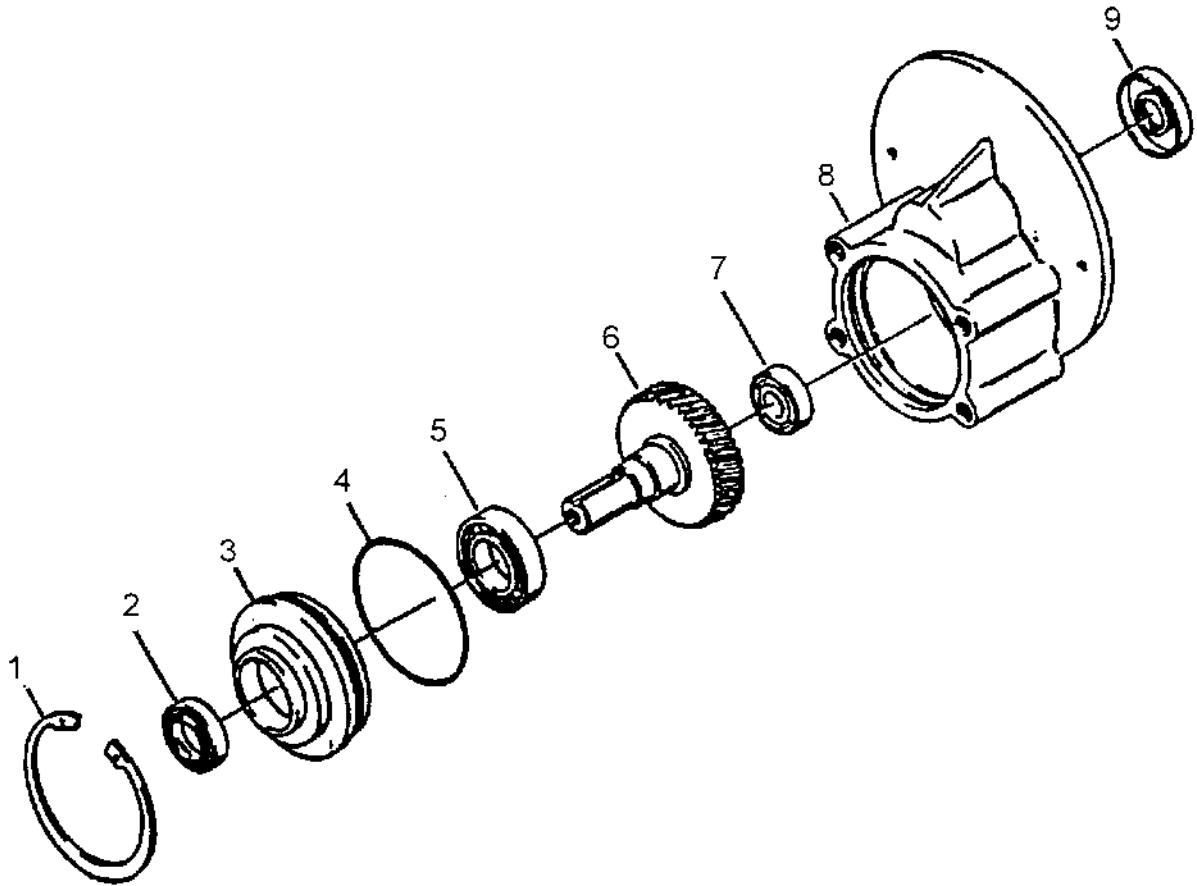


Ref #	Part No.	Description	Qty
1	56478A	Stator Assembly (w/Magnets & Clips)	1
2	40312A	Armature Asm.(w/B.E. & F.E. bearings)	1
3	902654	Bearings B.E.	1
4	902550	Bearing F.E.	1
5	51840A	Commutator Bracket Assembly (w/Brush BRD Assembly Leads)	1
6	50520A	Commutator Bracket	1
7	56480A	Strain Relief	2
8	962546	Brush Board Screw	2
9	50517A	Brush Board Asm. (w/springs & brushes)	1
10	448396	Brush Spring	4
11	40826A	Brush Assembly	4
12	55657A	Lead Assembly, Positive	1
13	55656A	Lead Assembly, Negative	1
14	59805A	Helical Washer	1
15	50515A	Thru Bolt	2
16	44809A	Shaft Key	1
17	54238A	B.E. Bracket Assembly (Gear Box)	1

IVIE Enterprises

www.ivie-ent.com Ph:(918)254-5161 or (888)262-5161 Fax:(918)250-4807

CLARKE TECHNOLOGY
 Encore S28XP/S33XP/S38XP
 Gear Box #54238A 4/01



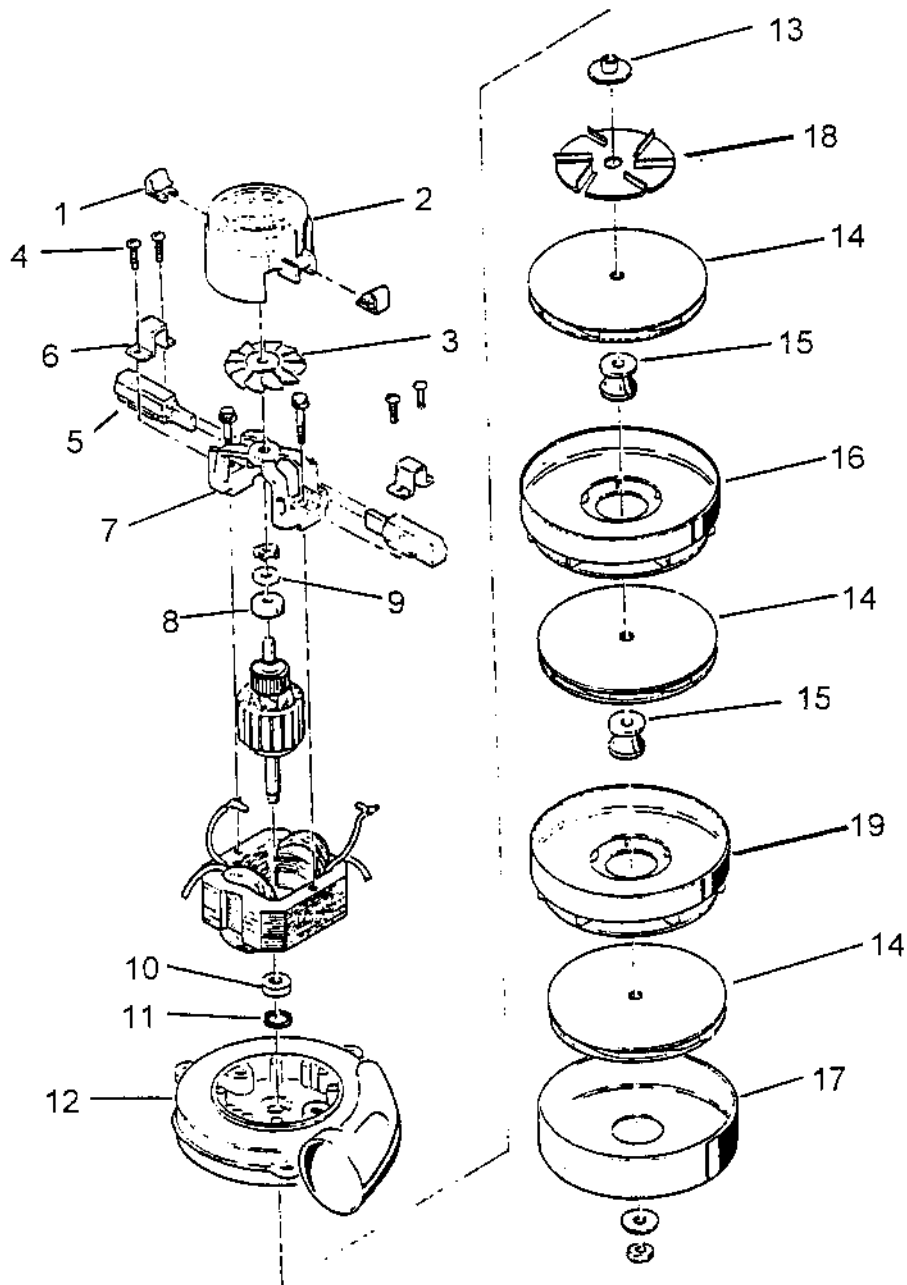
Ref #	Part No.	Description	Qty
1	57846A	Ring, Snap	1
2	507641	Seal, Oil, Small	1
3	52050A	Cap End	1
4	56668A	O'Ring	1
5	51176A	Bearing, Large	1
6	58316A	Shaft & Gear, Gearbox	1
7	902605	Bearing, Small	1
8	54883A	Housing	1
9	58144A	Seal, Oil Large	1
Ni		Darina Grease	4oz.

IVIE Enterprises

www.ivie-ent.com

Ph:(918)254-5161 or (888)262-5161 Fax:(918)250-4807

CLARKE TECHNOLOGY
Encore S28XP/S33XP/S38XP
Vac Motor Assembly #45019A 4/01



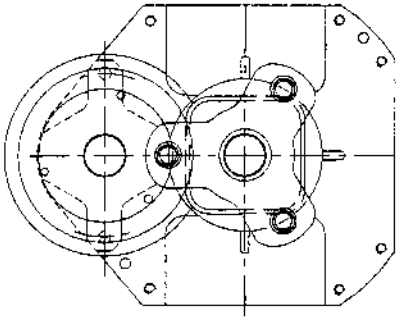
Ref #	Part No.	Description	Qty
1	51913A	Clip (optional)	2
2	54809A	Housing	1
3	53905A	Fan	1
4	85303A	Screw - 8-32 x 3/8	4
5	40830A	Carbon Brushes	2
6	51914A	Clamp	2
7	50618A	Bracket	1
8	53100A	Disc	1
9	902679	Bearing - Ball	1
10	902648	Bearing - ball, radial	1

Ref #	Part No.	Description	Qty
11	59803A	Washer - neoprene	1
12	50610A	Bracket and shell	1
13	58501A	Spacer	1
14	53914A	Fan - Rotating	3
15	658201	Spacer	2
16	53908A	Fan - Stationary	1
17	658506	Shell	1
18	53995A	Fan, Air Seal	1
19	53996A	Fan, Stationary	1

IVIE Enterprises

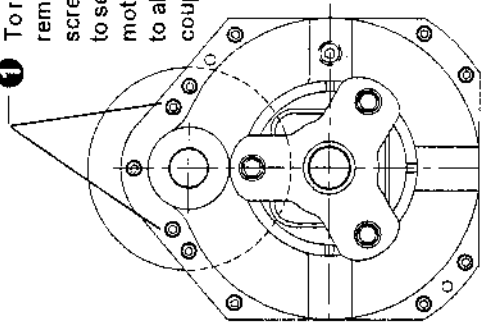
www.ivie-ent.com Ph:(918)254-5161 or (888)262-5161 Fax:(918)250-4807

CLARKE TECHNOLOGY
Encore S28XP/S33XP/S38XP
Imperial Transaxle Parts 4/01
PN 59116A
Transaxle has black motor

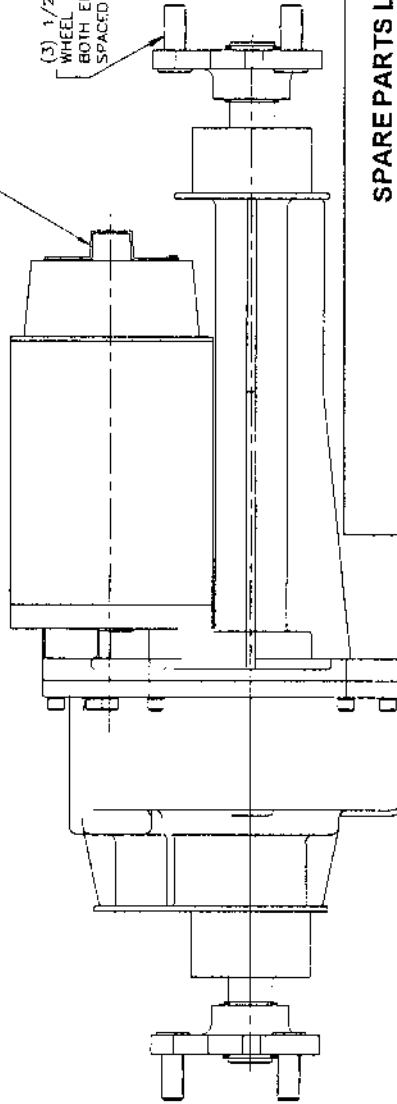


PERMANENT MAGNET MOTOR	
MFG. IN USA	
MODEL	4BC-2800
RPM	1200
VOLT.	36 VDC
AMP.	1.5
DUTY	CONT.
DATE	
SER. NO.	
18.1 RATIO	
INS. CL.	F
MOUNT	FLANGE
SHAFT	TANG
AMB.	
HP	.50

1 To replace coupler remove these two screws (Black) to separate the motor from gearbox to allow access to coupler



SHAFT EXTENSION GUARD
 BRAKE MTC. PROVISIONS
 AVAILABLE WHEN REQUIRED



3 1/2"-20 ZINC PLATED
 WHEEL FLANGE BOLTS,
 BOTH ENDS EQUALLY
 SPACED ON A 3.500 DIA. B.C.

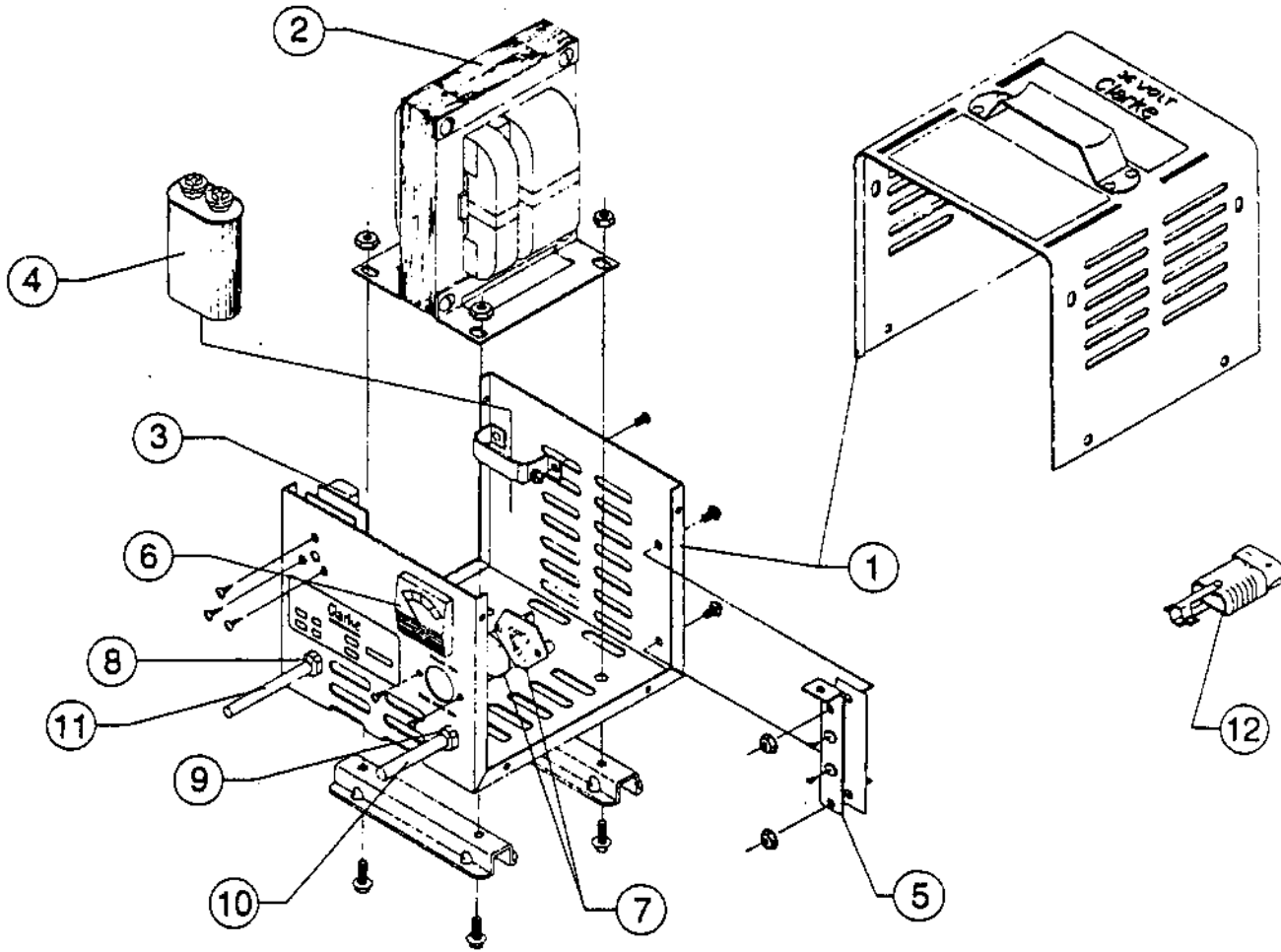
SPARE PARTS LIST
59116A Imperial Transaxle (black motor)

Part #	Description	Qty
36508A	Transaxle Ribber Mount	2
51720A	Brushes (Set of 4, including springs)	1
30074A	Cap. Brush	1
912206	Male Electrical Housing (connector)	1
912207	Male Electrical Pin (connector)	2
169195A	Coupler, Rubber	1
52663A	Steel Ring, Coupler	1
45048A	Motor, Replacement	1
54282A	Gearbox Replacement	1
10684A	Parking Brake Kit (electric)	1
51201C	Parking Brake Replacement	1

Parking Brake Spare Parts

Part No.	Description	Qty
51097A	Pad, Friction	1
51098A	Hub, Shaft	1
80121A	Key, 4 MM - Hub	1
80122A	Set Screw, M3 - Hub	1

CLARKE TECHNOLOGY
 Encore S28XP/S33XP/S38XP
 36 Volt Battery Charger 4/01



WARNING: All electrical repairs must be performed by qualified personnel only.

PARTS LIST FOR BATTERY CHARGERS

40506A - 36 Volt D.C., 25A, 115 Volt A.C., 60 Hz
 40505A - 36 Volt D.C., 25A, 230 Volt A.C., 50 Hz
 40507A - 36 Volt D.C., 25A, 230 Volt A.C., 60 Hz
 40514A - 36 Volt D.C., 36A, 115 Volt A.C., 60 Hz
 40515A - 36 Volt D.C., 36A, 230 Volt A.C., 50Hz

Ref #	Description	Charger Model Number				
		40506A Part #	40507A Part #	40505A Part #	40514A Part #	40515A Part #
1	Charger Case	42503A	42504A	51959A	41139A	51856A
2	Transformer	48400A	48412A	48401A	Ref	Ref
3	Electronic Timer Kit	41102A	41103A	41103A	41102A	41103A
4	Capacitor, 6 Mfd., 660 V.A.C.	912132	912132	912132	912132	912132
5	Heat Sink Assembly	912212	912212	912212	43301A	43301A
6	Ammeter	40200A	40200A	40200A	40210A	40210A
7	Fuse Assembly	912382	912382	912382	42704A	42704A
8	Strain Relief, A.C. Cord	837525	837525	837525	747553	747553
9	Strain Relief, D.C. Cord	747553	747553	747553	737502	737502
10	D.C. Cord Assembly	51973A	51973A	51973A	42303A	42303A
11	A.C. Cord Assembly	51974A	908947	908947	51974A	51857A
12	D.C. Plug	911185	911185	911185	911185	911185
	D.C. Plug Lock Key	795020	795020	795020	795020	795020

IVIE Enterprises

www.ivie-ent.com

Ph:(918)254-5161 or (888)262-5161 Fax:(918)250-4807